

# **Histology Practical slides**

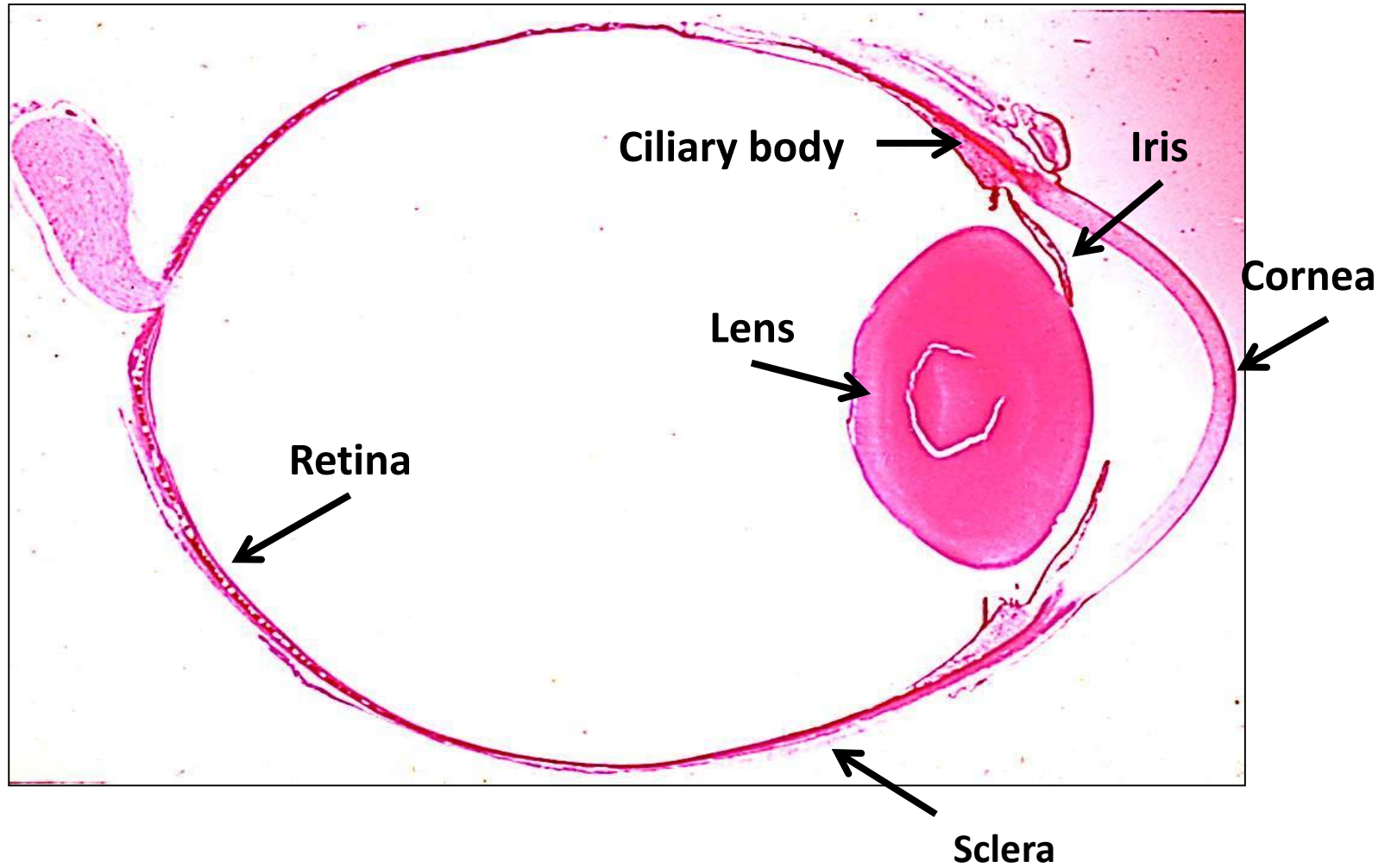
## **3<sup>rd</sup> year/ 2026**

### **PNS module**

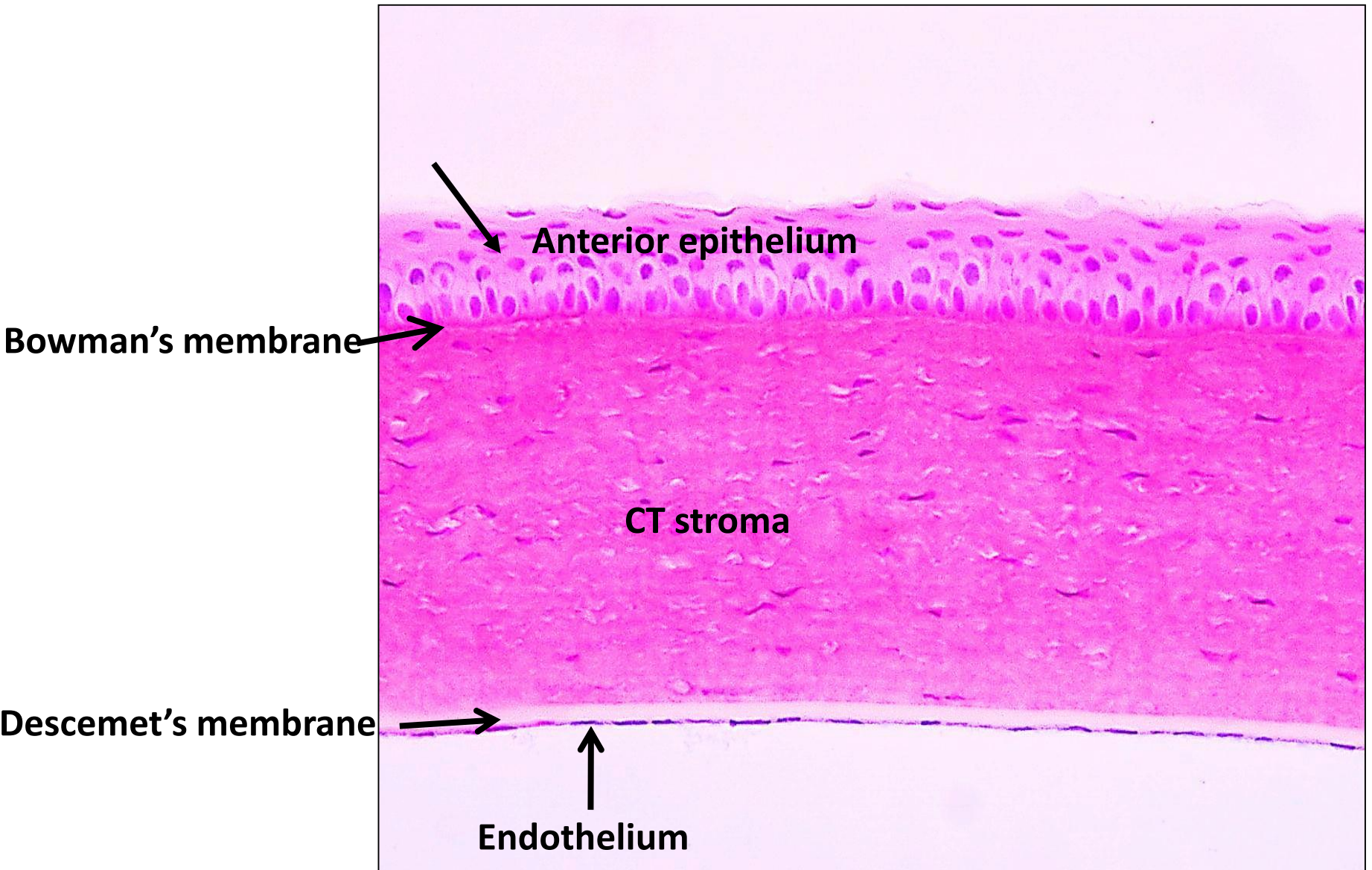
## The assigned slides:

1. The eye ball - The cornea - The retina
2. The cochlea (ear)
3. The spinal ganglion (H&E)
4. The spinal ganglion (sliver)
5. The sympathetic ganglion ( H&E)
6. The sympathetic ganglion (sliver)
7. The nerve trunk (H&E)
8. The nerve trunk ( osmic acid)
9. Pacinian corpuscle in pancreas
10. Messienner's corpuscles in skin

# H&E) (The eye ball)



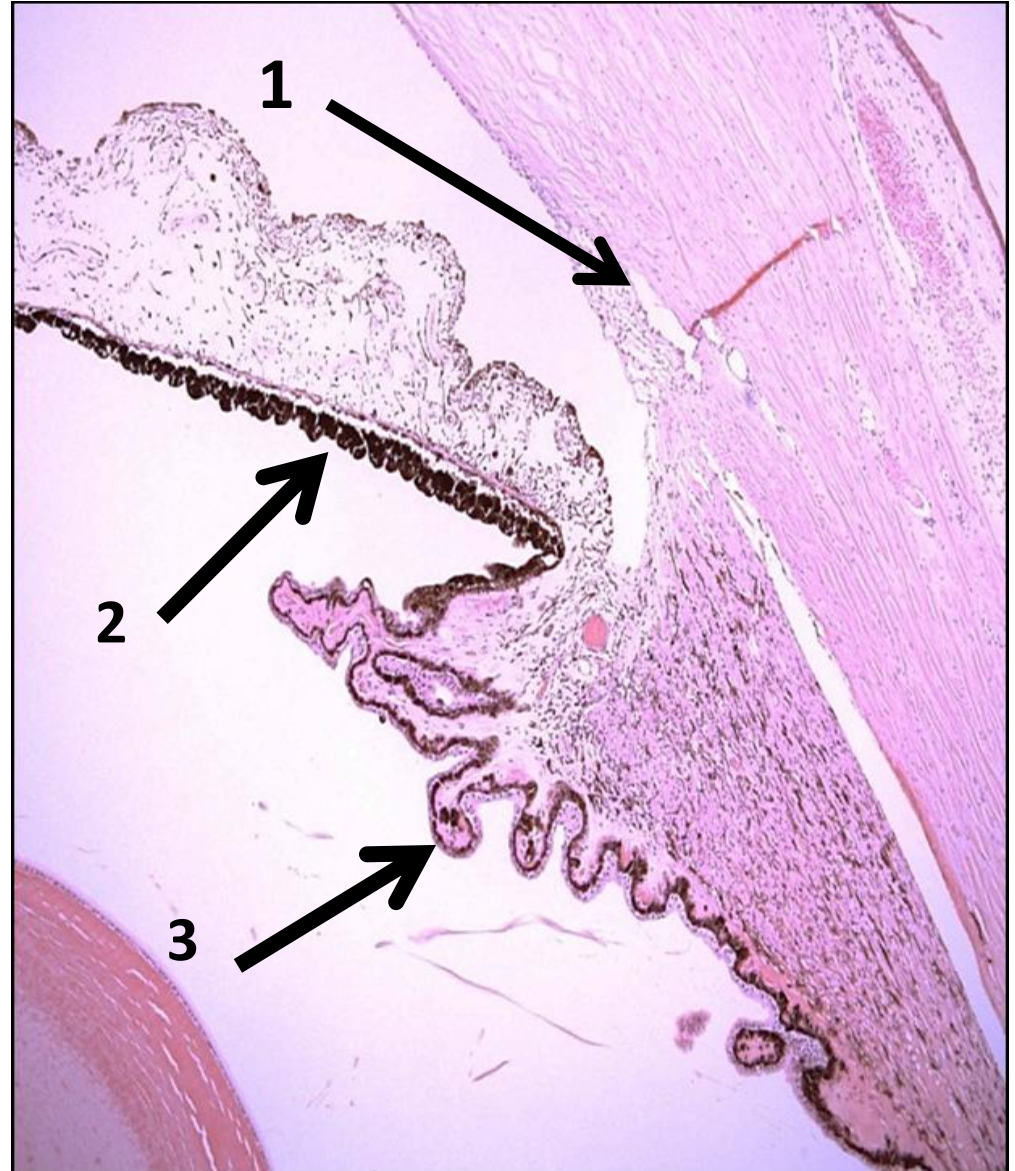
# The cornea (H&E)



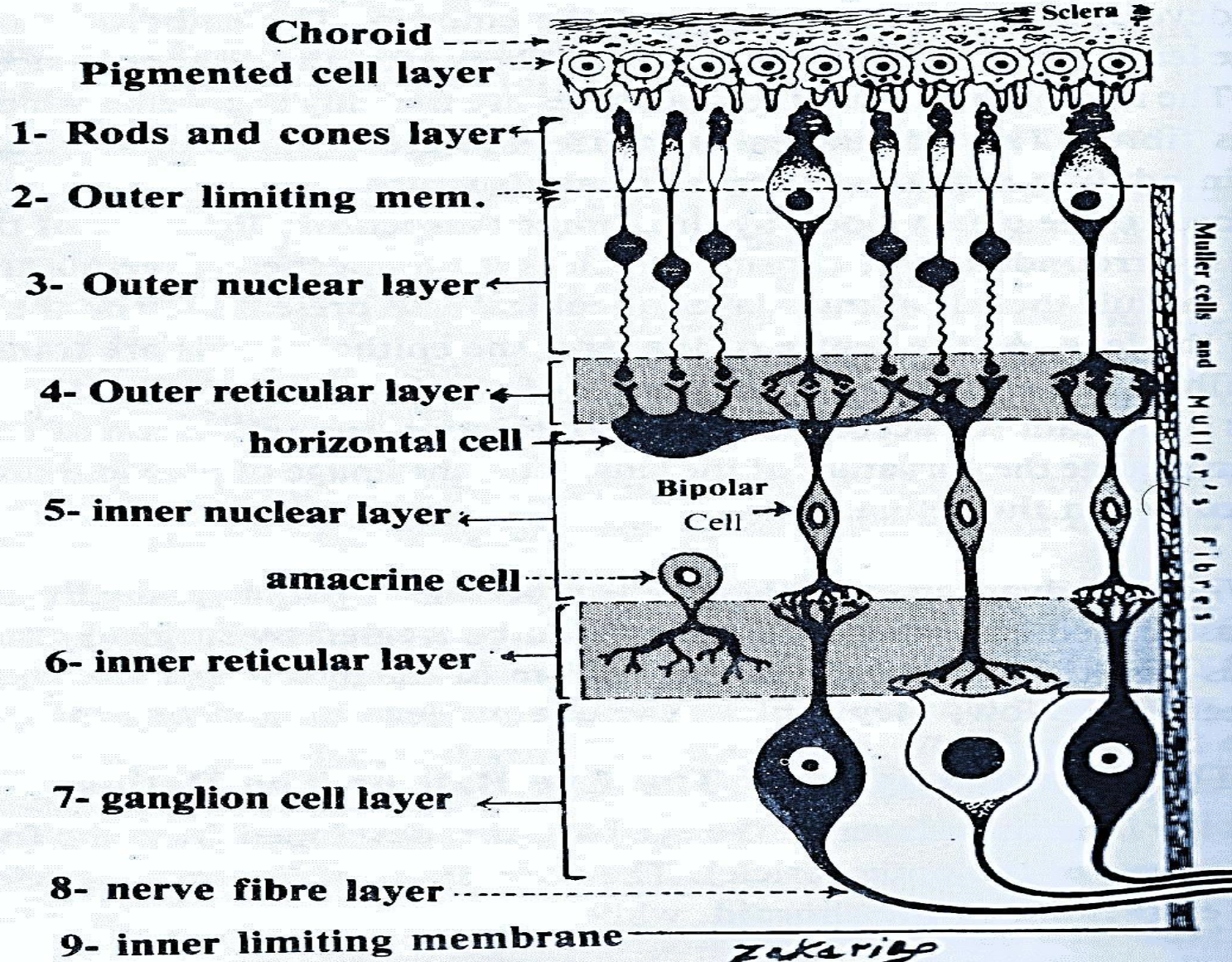
**1- Canal of Schlemm**

**2- Pigmented epithelium  
of lower surface of iris**

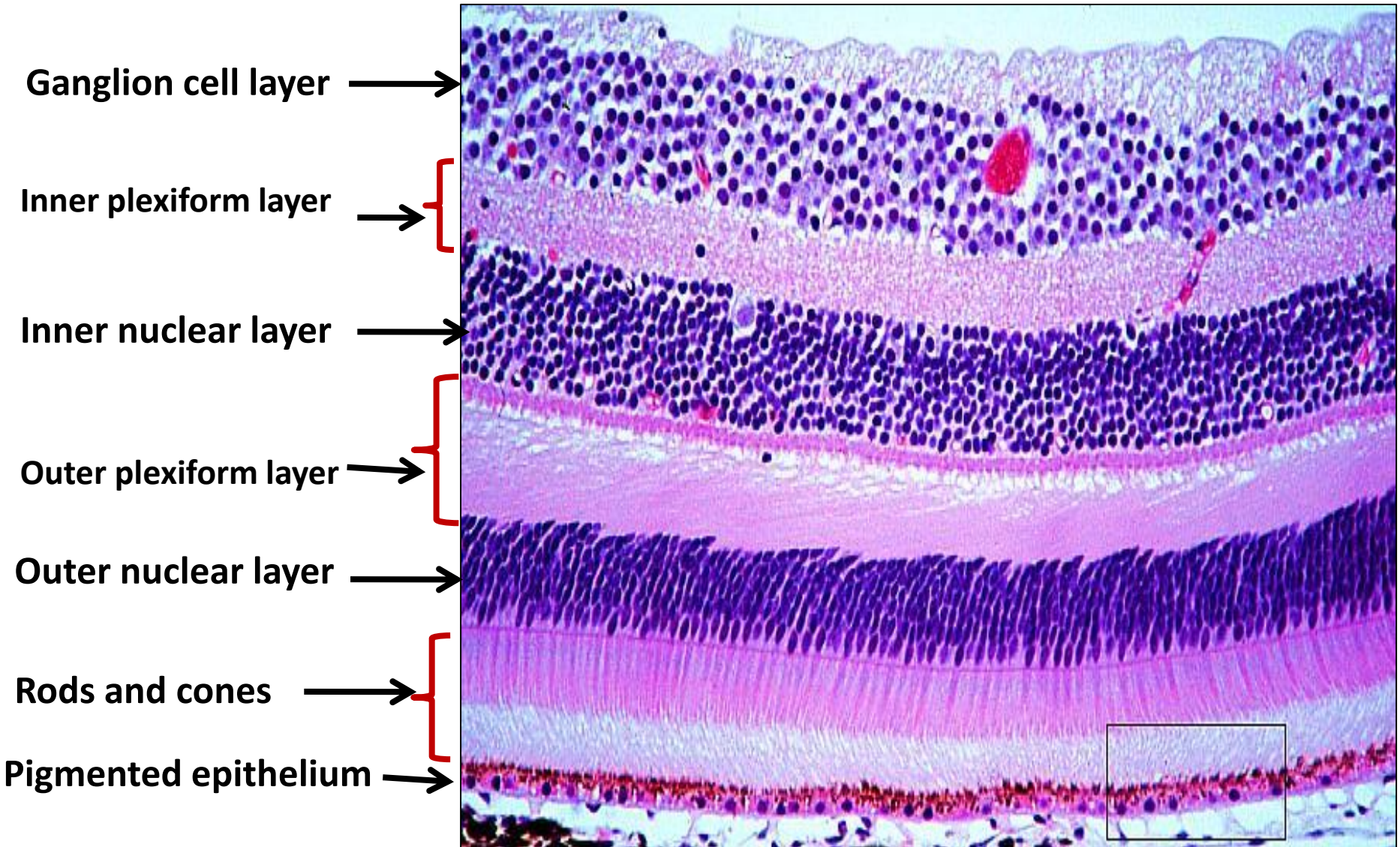
**3- Ciliary process**



# 1- The Retina

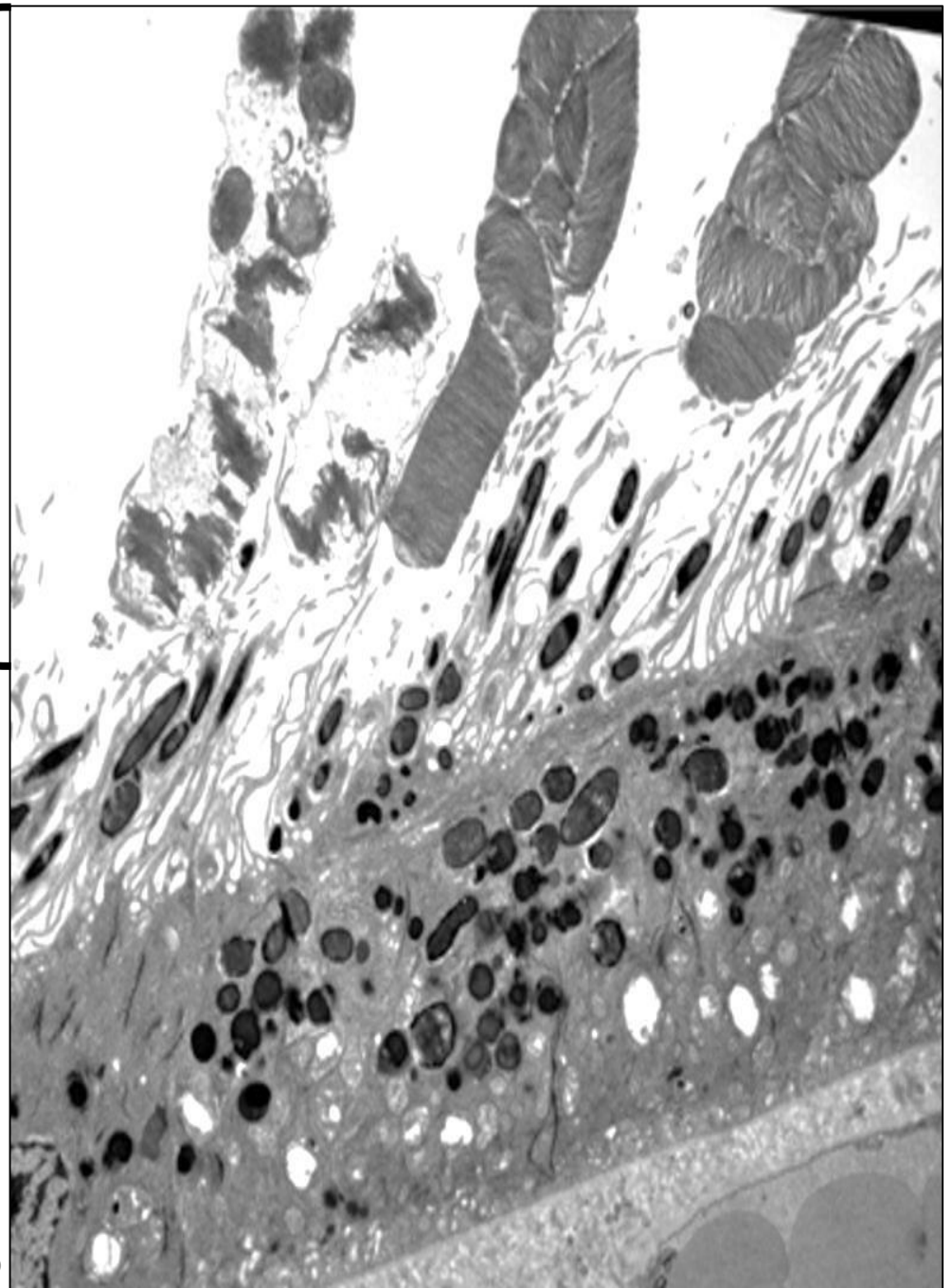


# The retina (H&E)



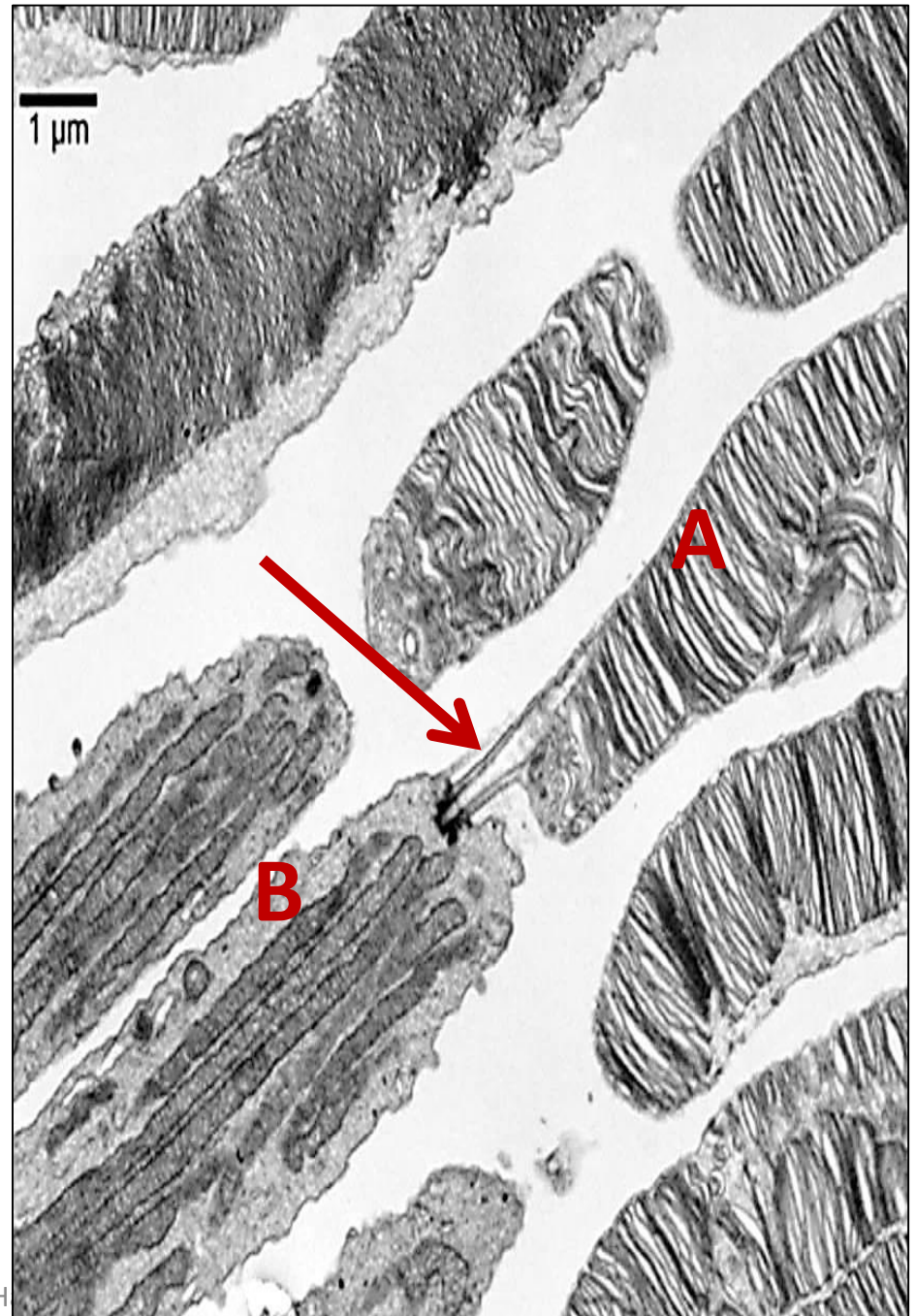
Outer segment of photoreceptors

Retinal pigmented epithelium (RPE)



Pro

TEM of retina showing  
photoreceptor (Rod):  
(A) outer segment  
(arrow) Cilium  
(B) inner segment



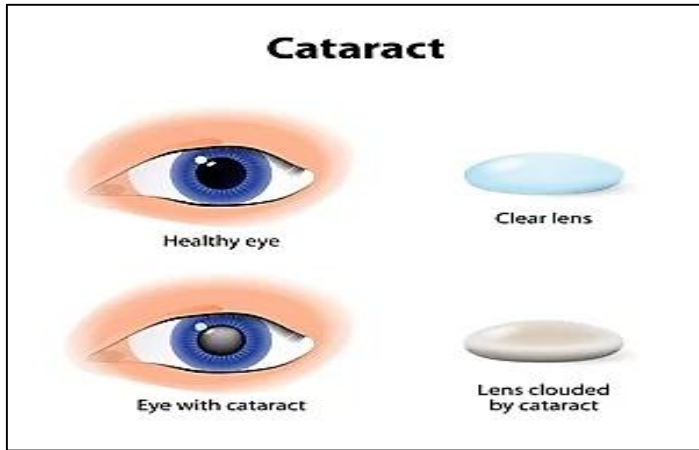
**Ciliary epithelium:**

Composed of two layers of cuboidal epithelium.

**Ciliary Body & process**



# Lens



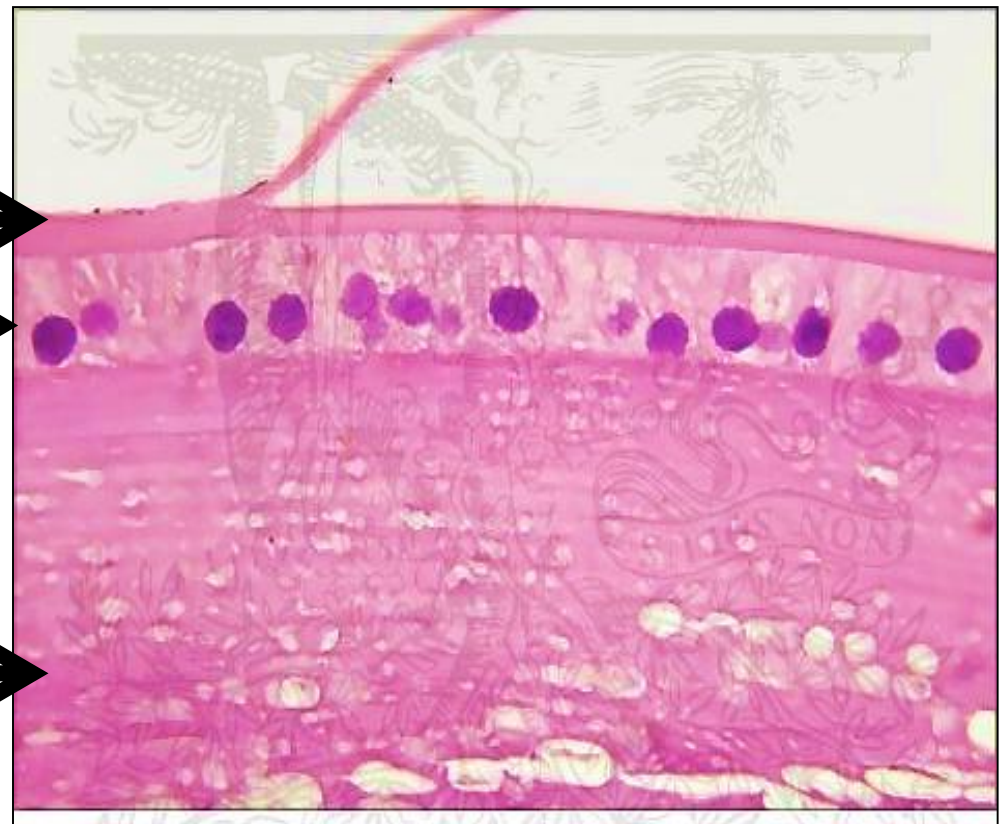
Lens capsule



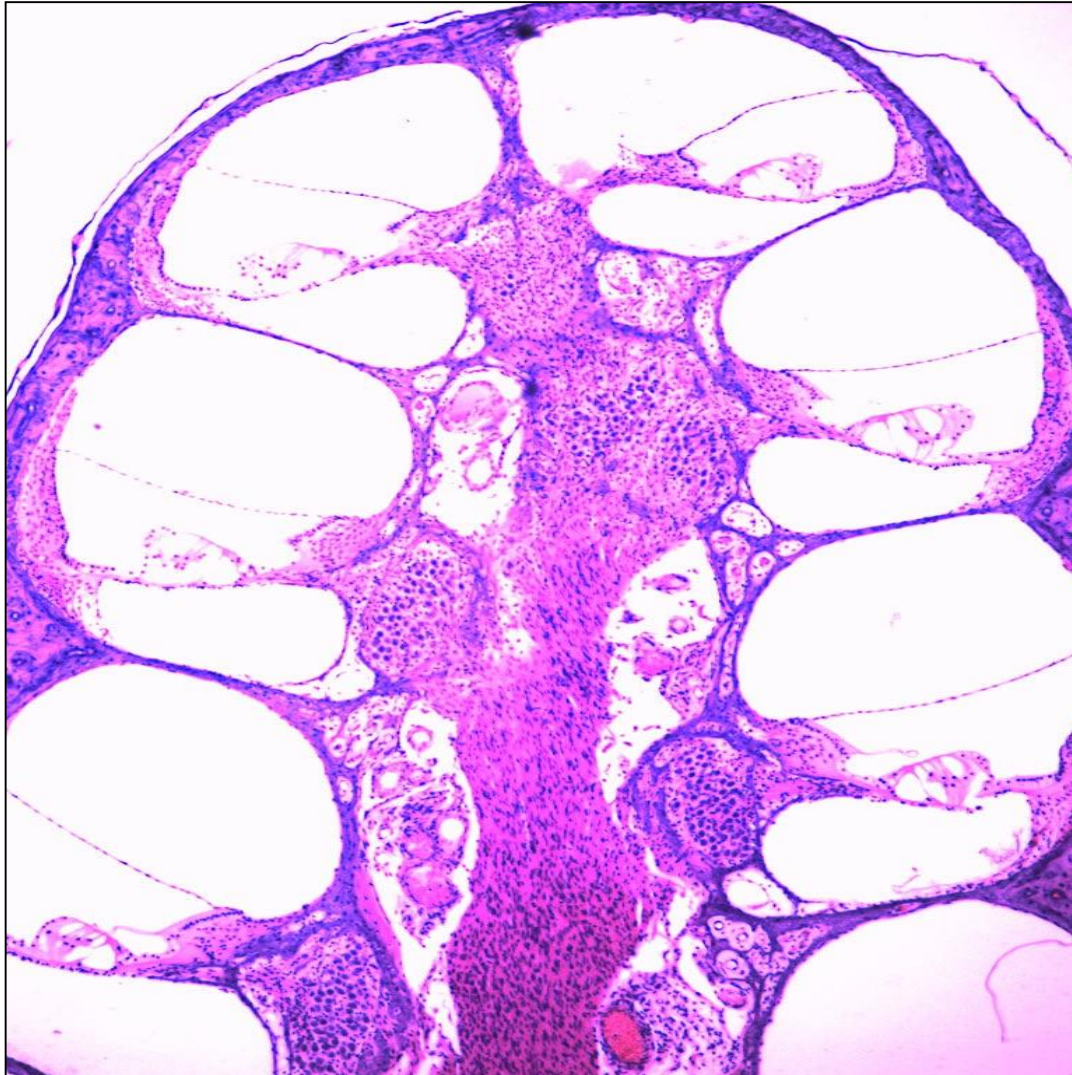
Lens epithelium



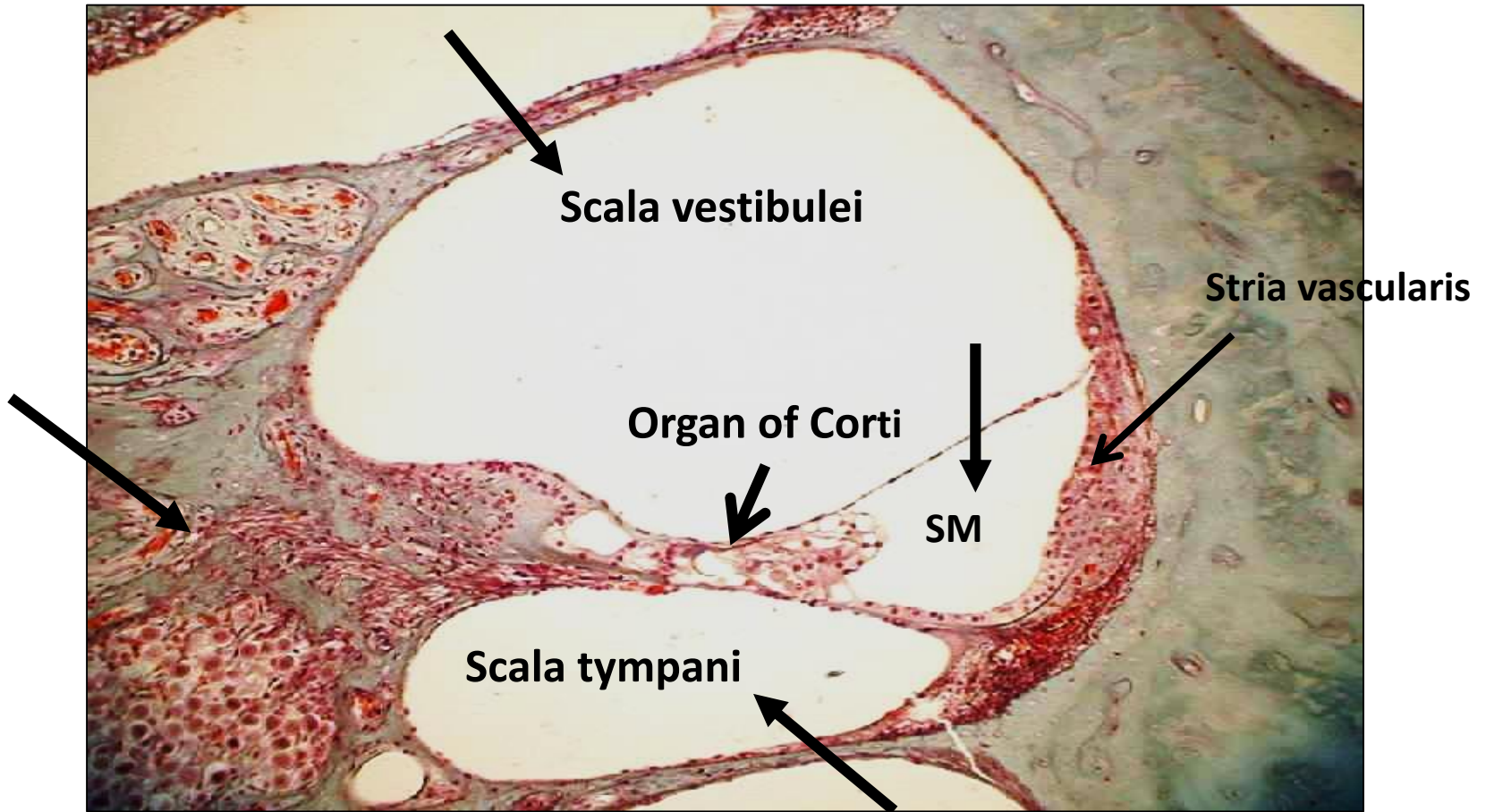
Lens fibers



# The cochlea



# The cochlea – organ of Corti



- 1- Scala vestibule
- 2- Scala tympani
- 3- Scala media (SM) = cochlear duct
- 4- organ of Corti
- 5- stria vascularis
- 6- Modiolous

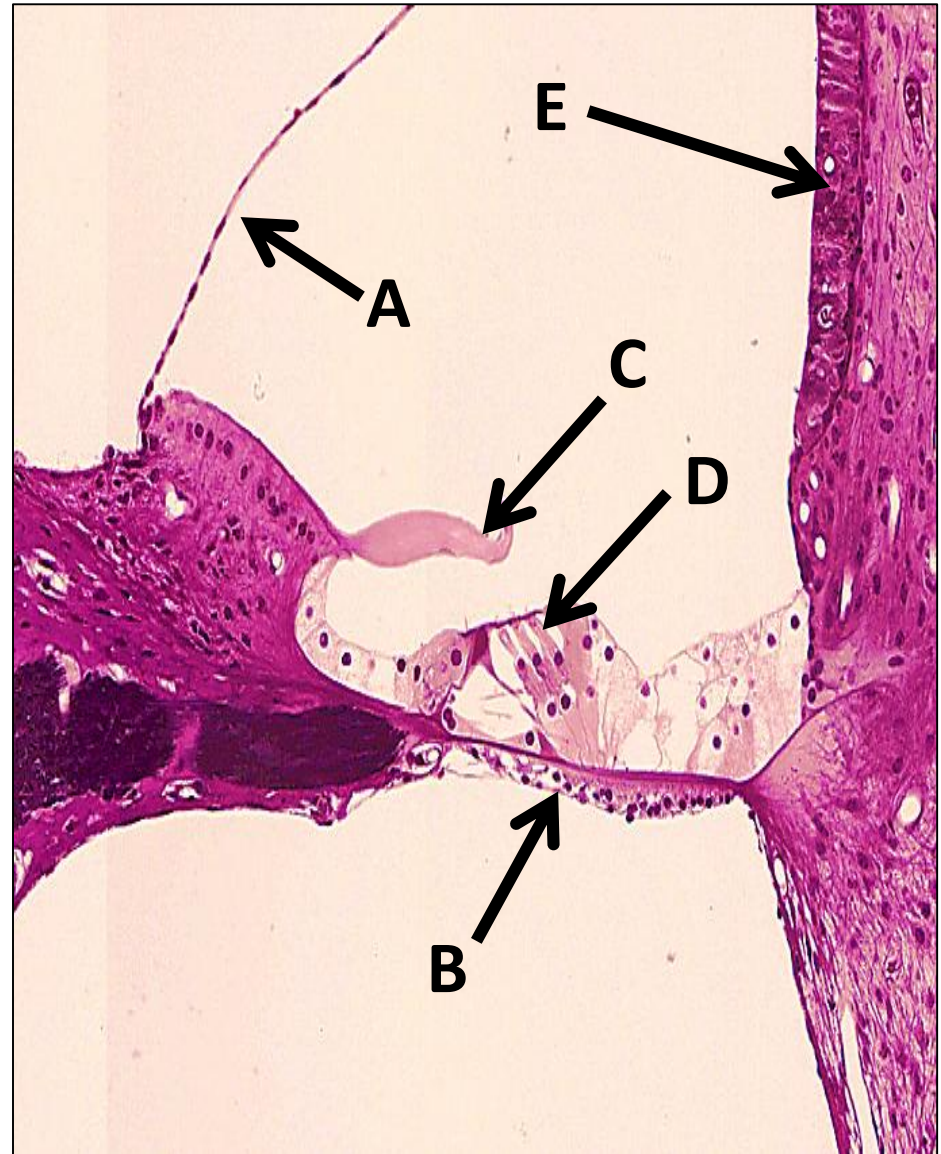
**A: Vestibular membrane**

**B: Basilar membrane**

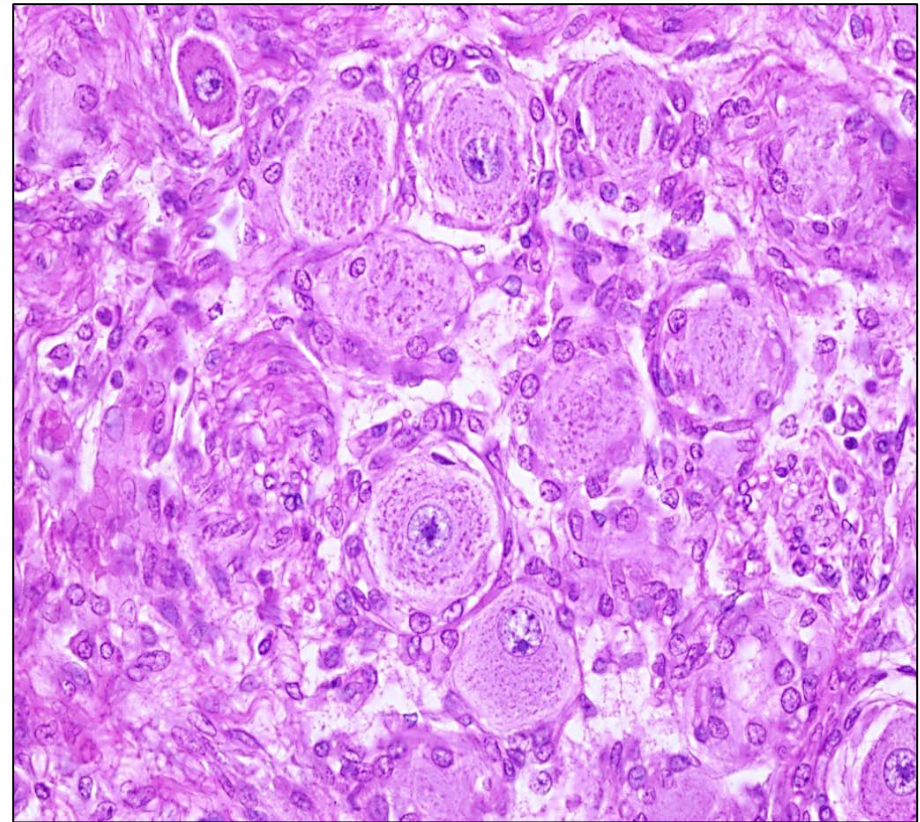
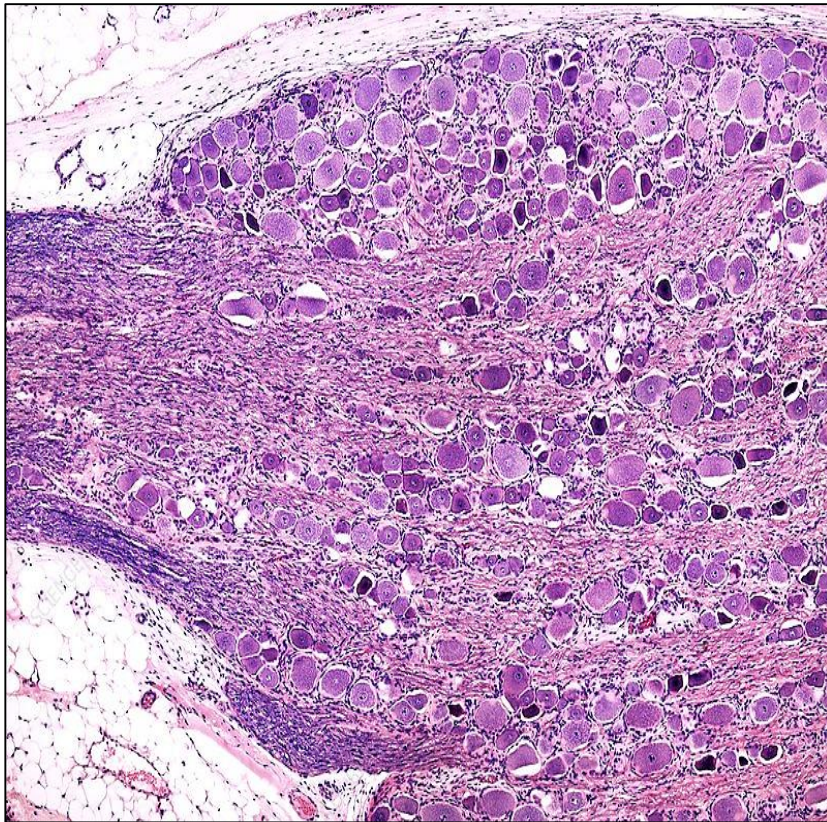
**C: Tectorial membrane**

**D: Outer hair cells**

**E: Stria vascularis**

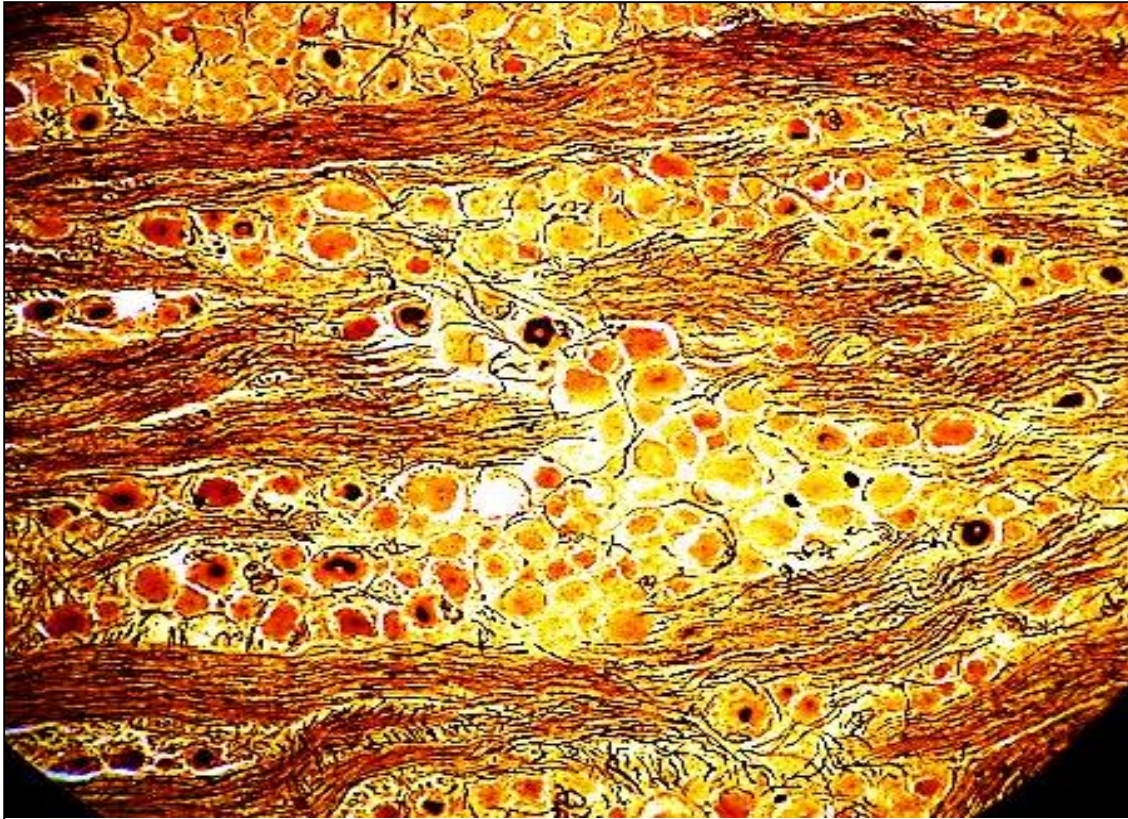


# The spinal ganglion (H&E)



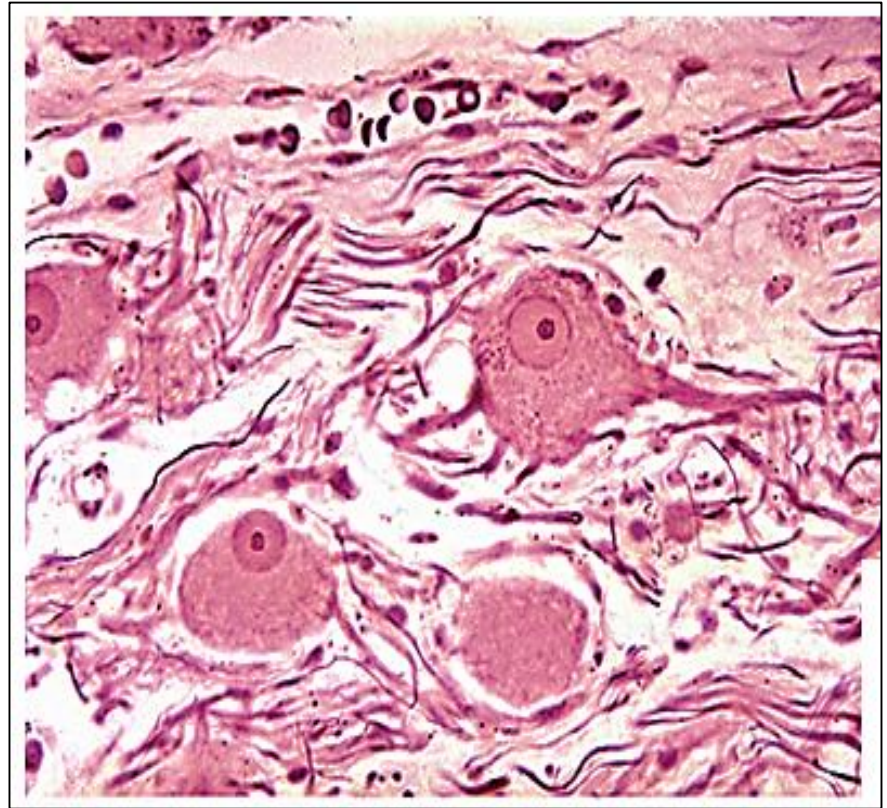
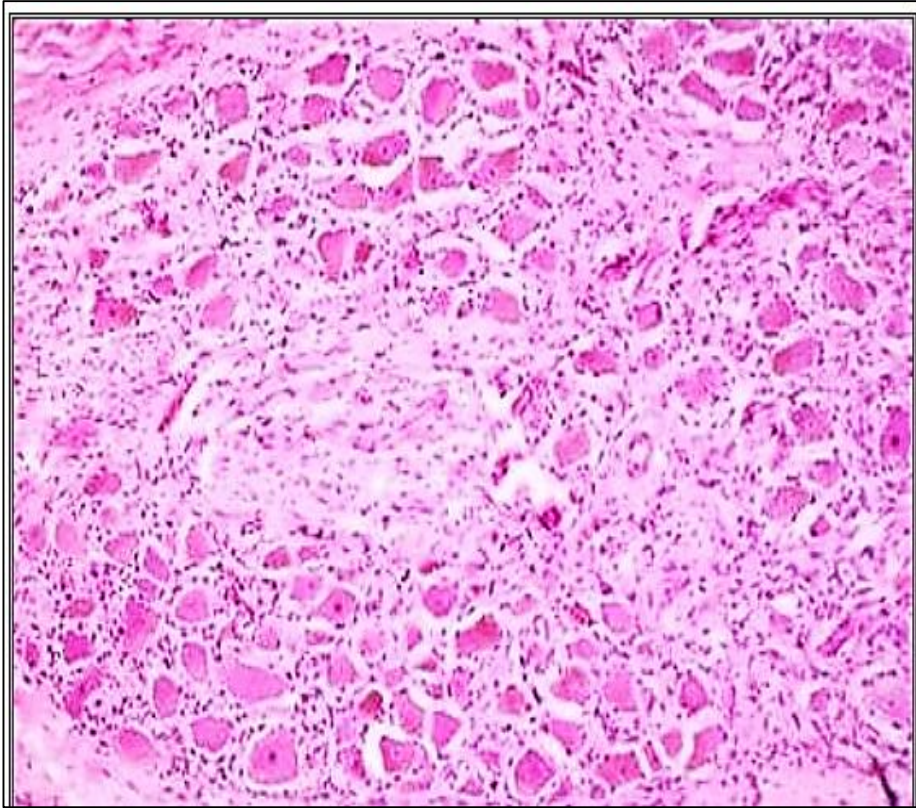
- 1- nerve cells are rounded ( unipolar) & present in rows**
- 2- nuclei central**
- 3-Myelinated nerve fibers**
- 4- Satellite cells surround each nerve cell body**

# The spinal ganglion (sliver)



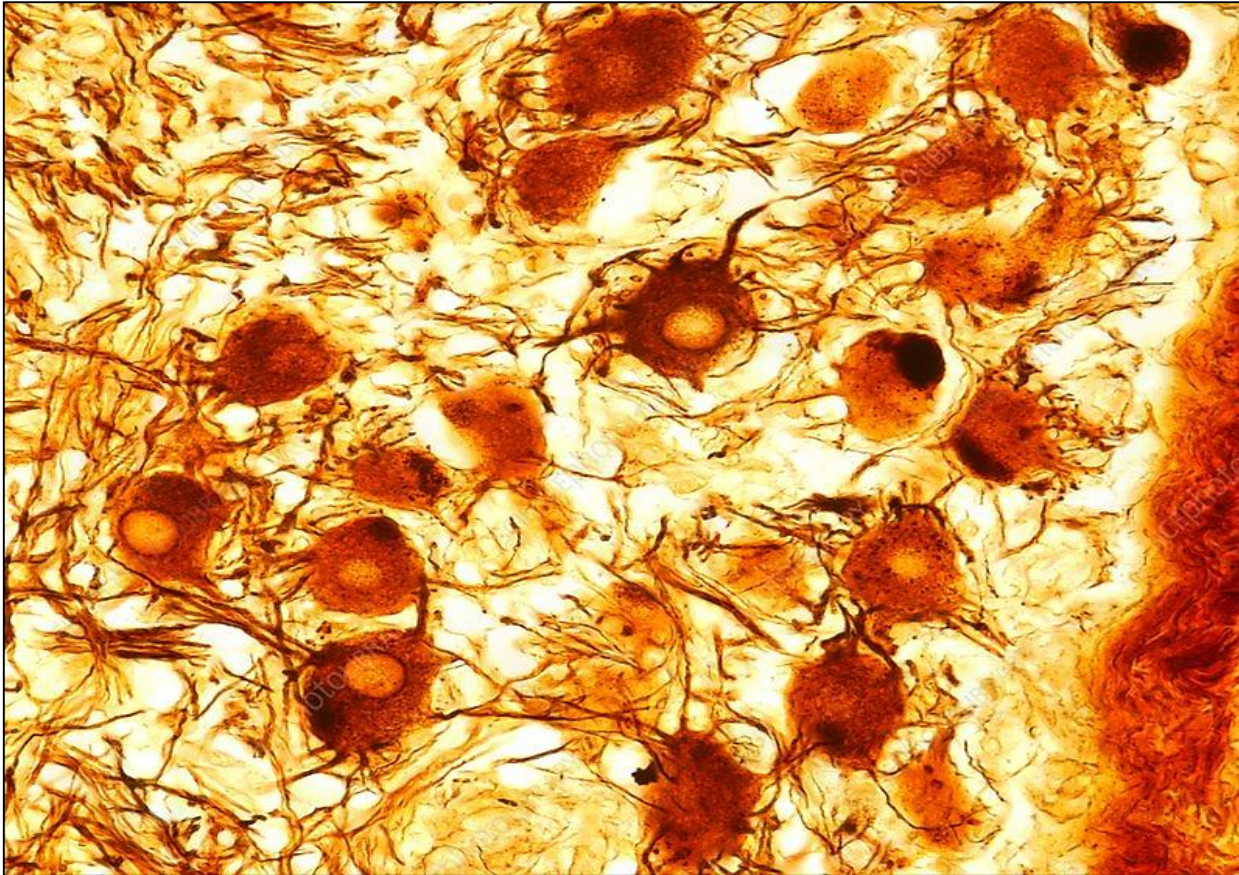
- 1- nerve cells are rounded ( unipolar) & present in rows
- 2- Myelinated nerve fibers

# Sympathetic ganglion (H&E)



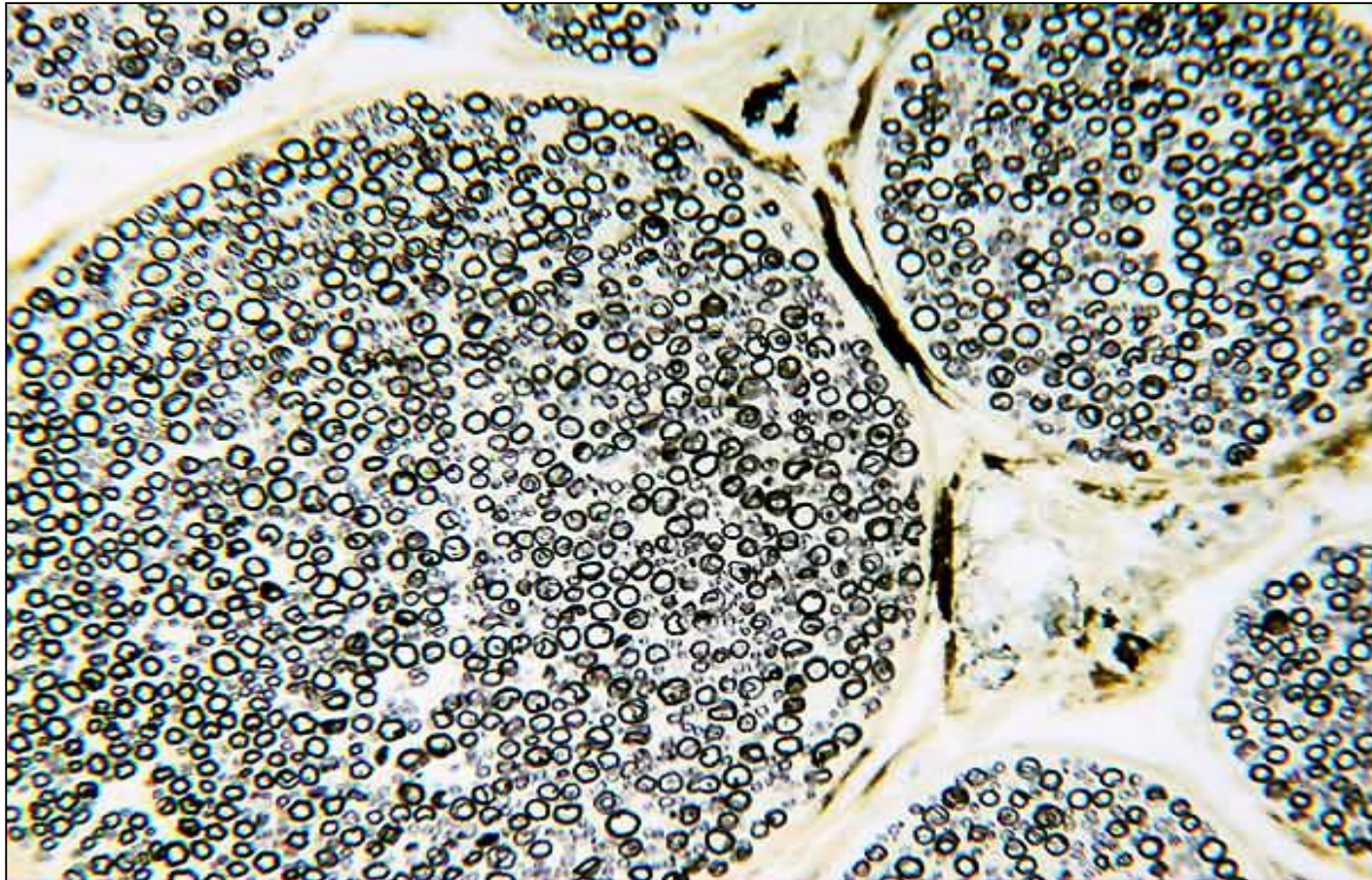
- 1- nerve cells are multipolar and scattered**
- 2- nuclei are eccentric**
- 3- few satellite cells**

# Sympathetic ganglion (sliver)



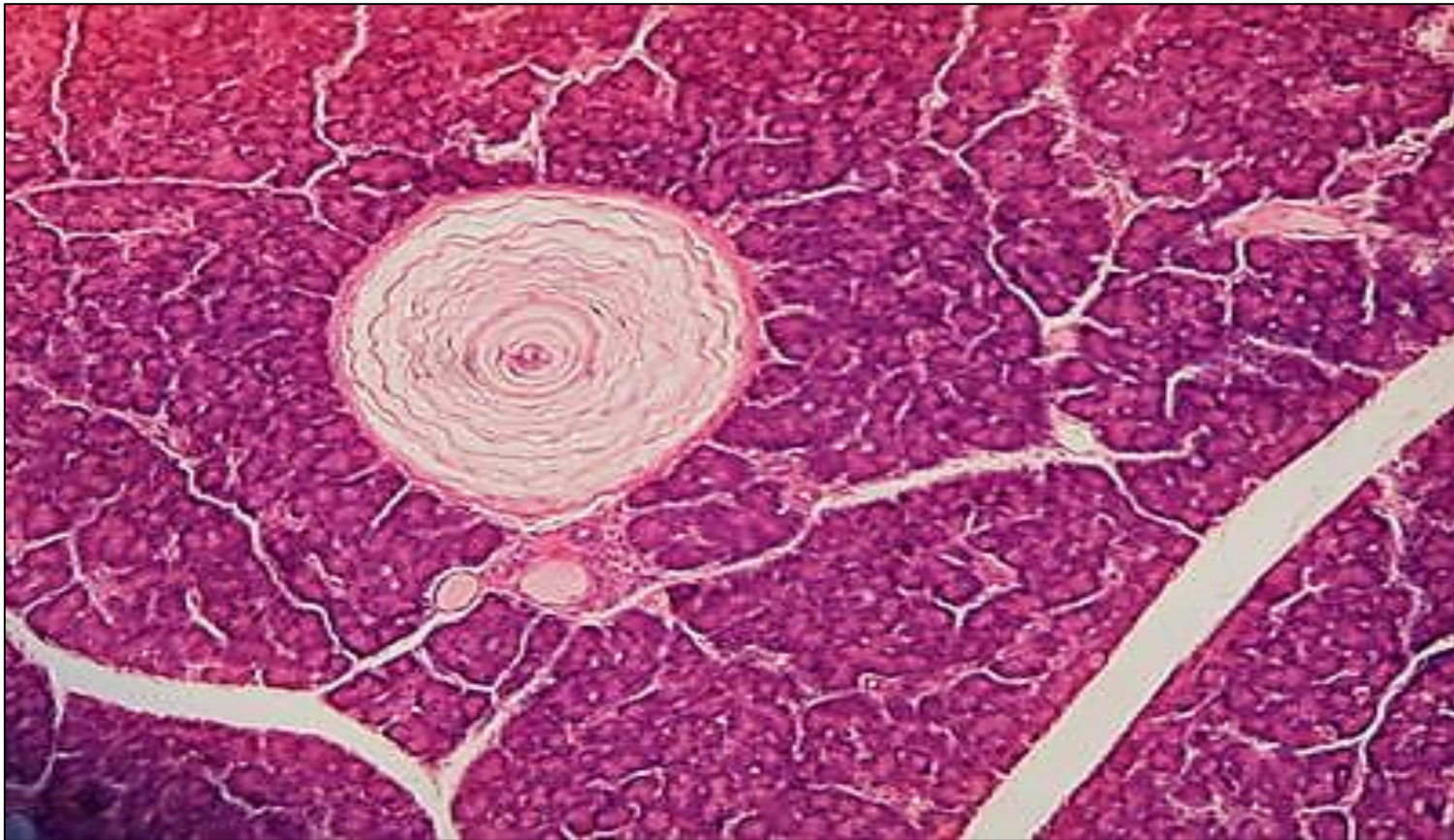
- 1- nerve cells are multipolar and uneven**
- 2- nerve cells are scattered**

# Nerve trunk(Osmic acid)



**Myelin sheath stained black**

# Pacinian corpuscle

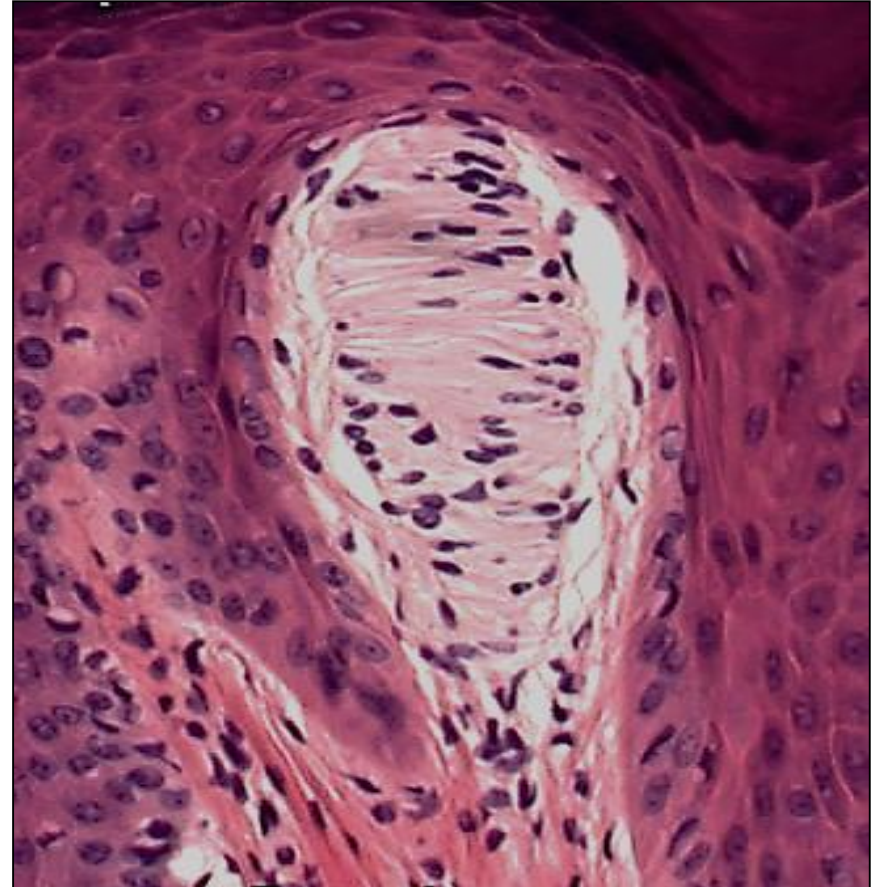


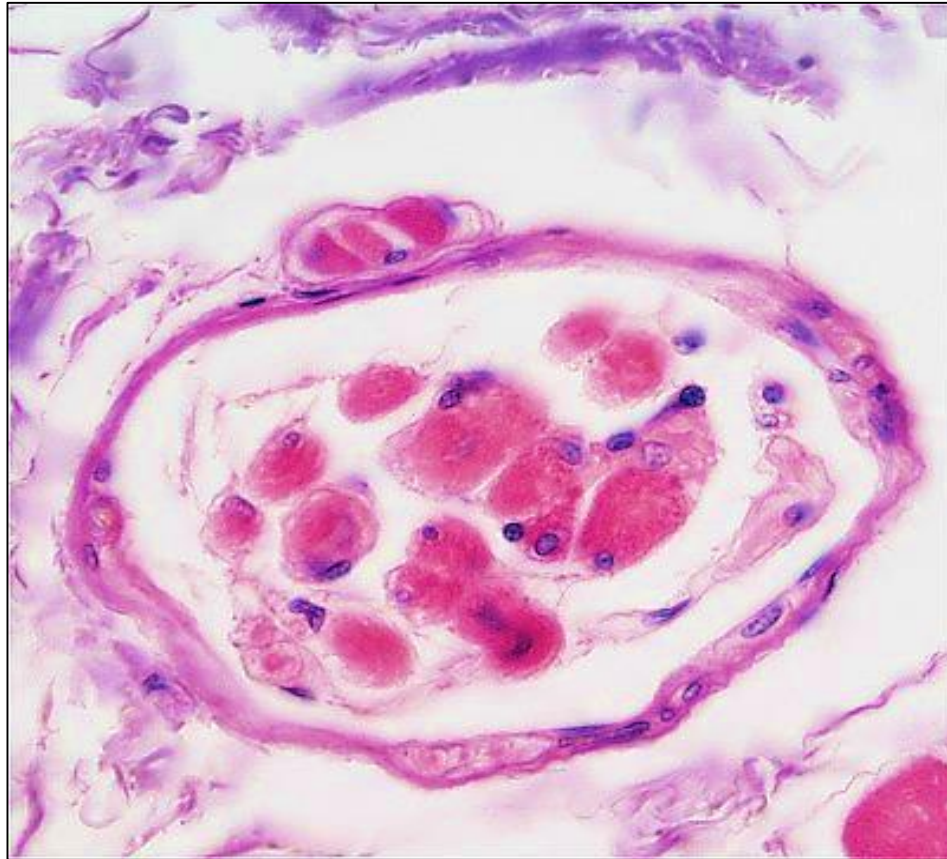
**1- Large oval structure**

**2- concentric layers of Schwann like cells**

# Meissner's corpuscles

- 1- Oval structures
- 2- found at the dermal papillae of skin





## Muscle spindle



**Crista ampullaris**



**Taste buds**

**Thank you**