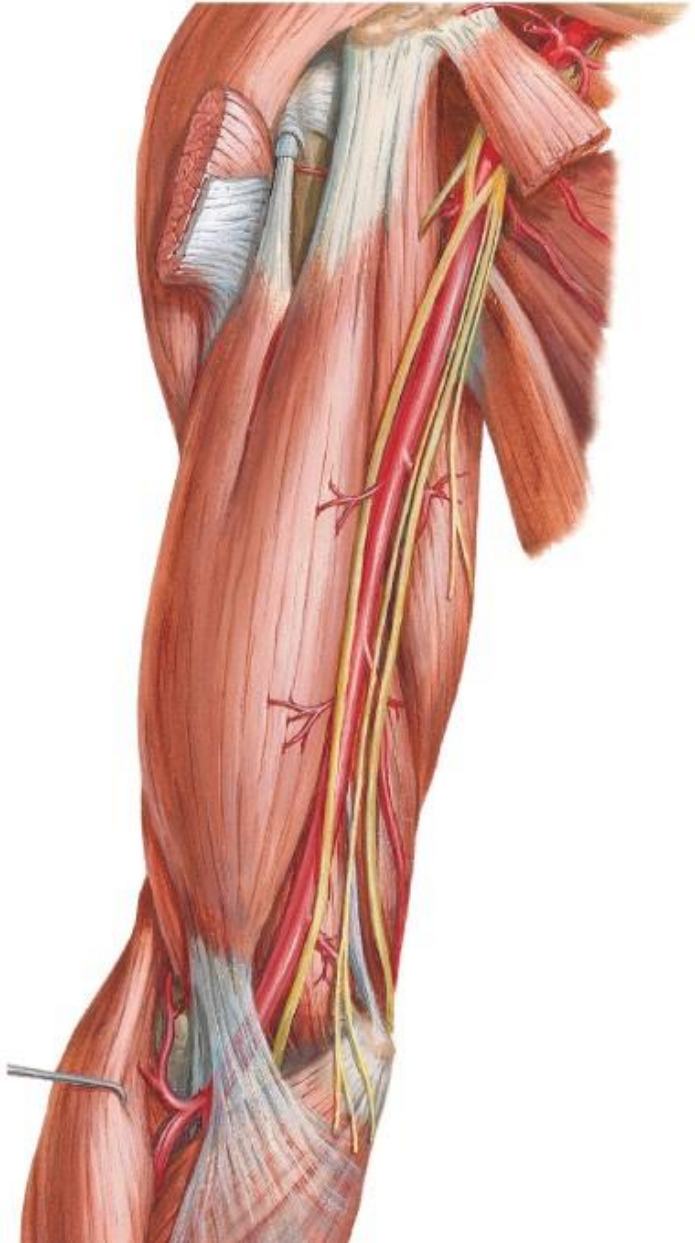
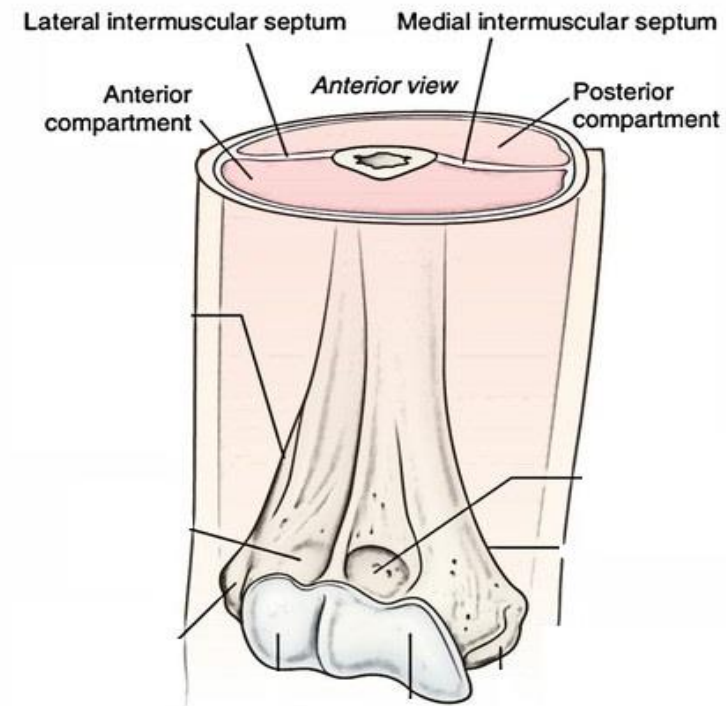
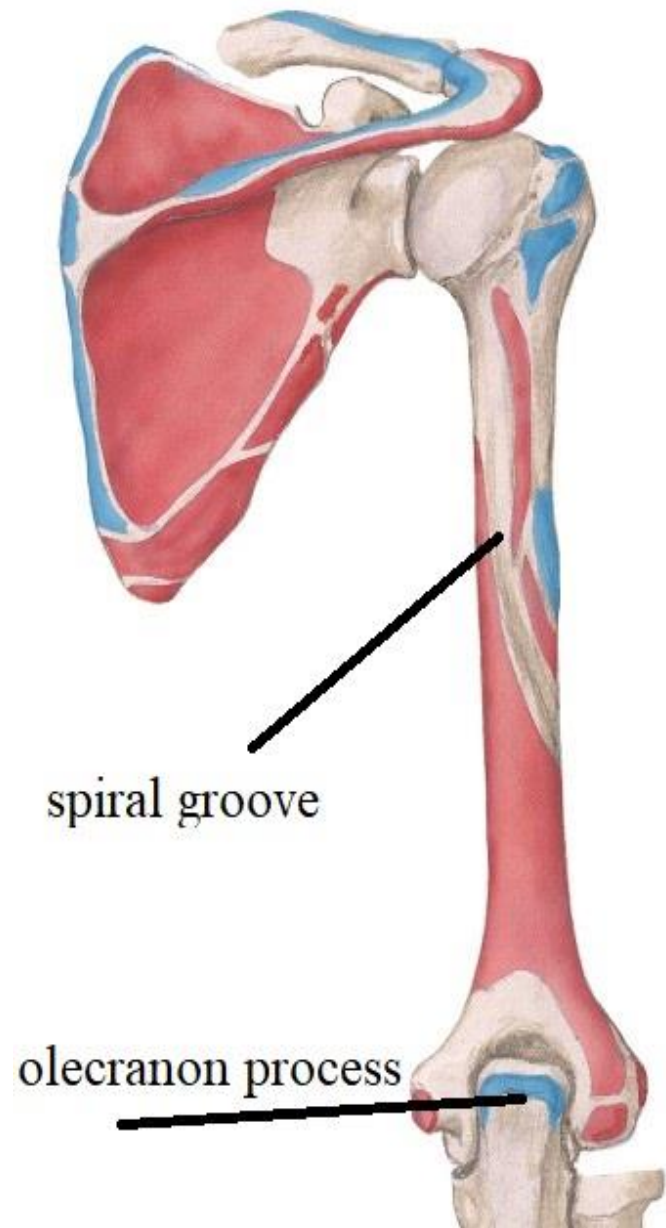
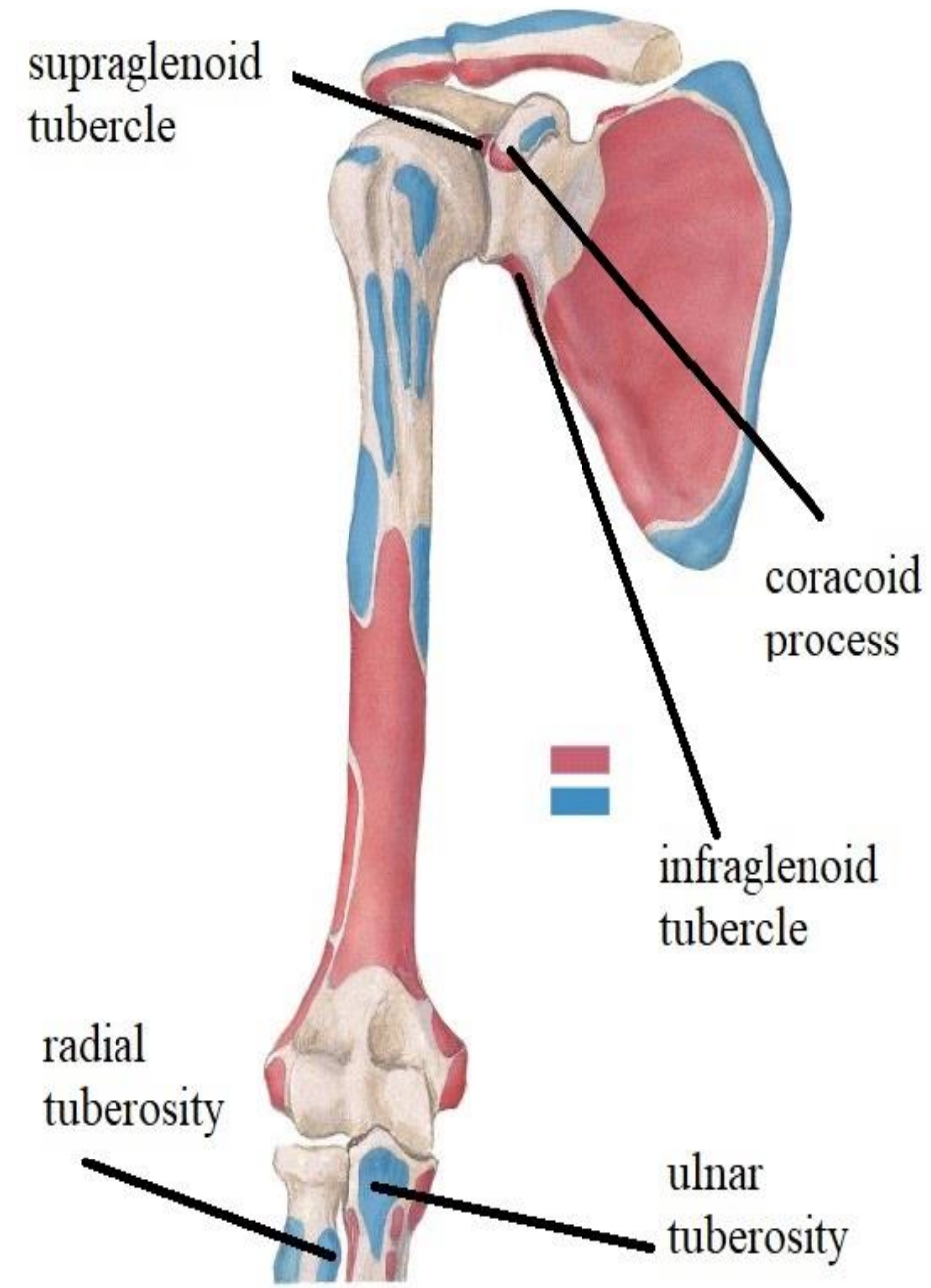


ARM



BY

DR ABULMAATY MOHAMED
ASSISTANT PROFESSOR
ANATOMY & EMBRYOLOGY
MUTAH UNIVERSITY



MUSCLES OF THE ARM

The arm is divided by humerus & medial and lateral intermuscular septa into

Ant. Compartment: = flexor Post. Compartment: = extensor

MUSCLES OF THE ANTERIOR COMPARTMENT

BRACHIALIS

Origin:- Lower 1/2 of ant. surface of humerus
& intermuscular septa

Insertion:- ulnar tuberosity

Action:- main flexor of elbow joint

Nerve supply:- Musculocutaneous n.

radial n. to the lateral part

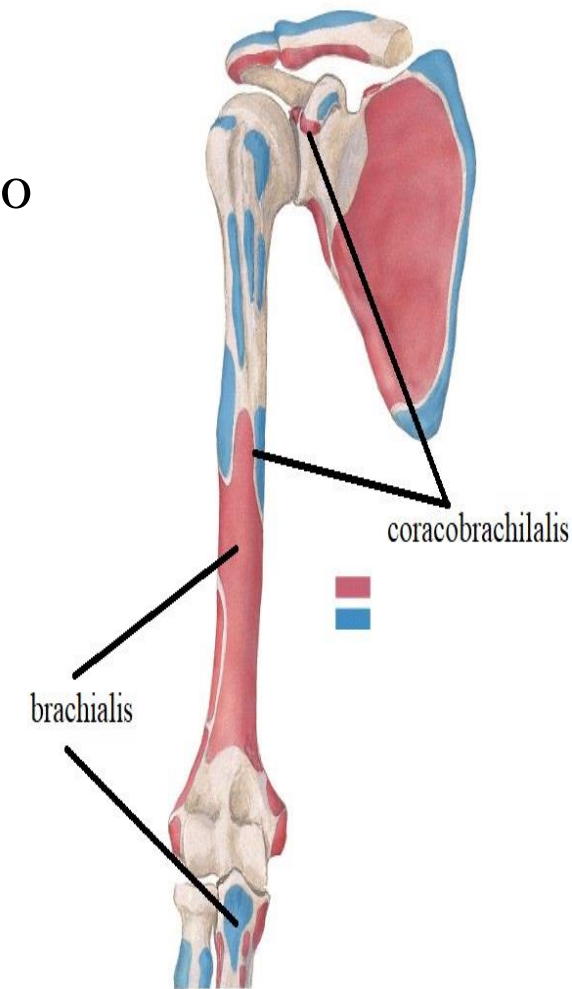
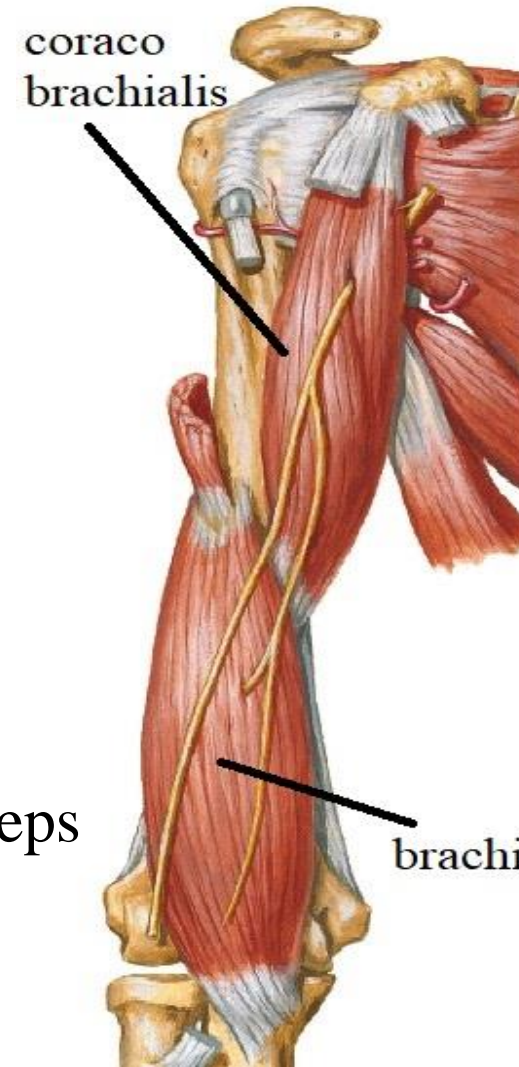
CORACO-BRACHIALIS

Origin:- tip of coracoid process with short head of biceps

Insertion:- middle of medial border of humerus

Action:- Helps flexion & adduction of shoulder joint.

Nerve supply:- musculocutaneous n



MUSCLES OF THE ARM

MUESLES OF THE ANTERIOR COMPARTMENT

Biceps (in front of brachialis) 2 heads:

Origin:-

short head :-from tip of coracoid process with coracobrachialis

Long head: - by a tendon from supraglenoid tubercle pass in the capsule of shoulder joint then pass through bicipital groove.

Insertion:-

By tendon :- radial tuberosity

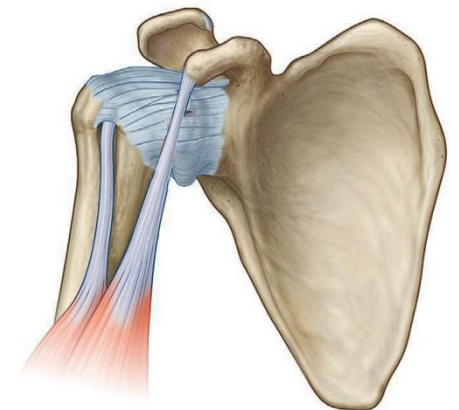
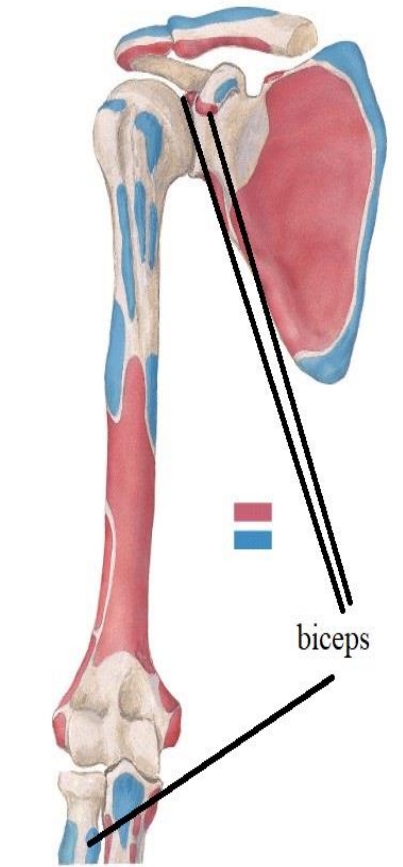
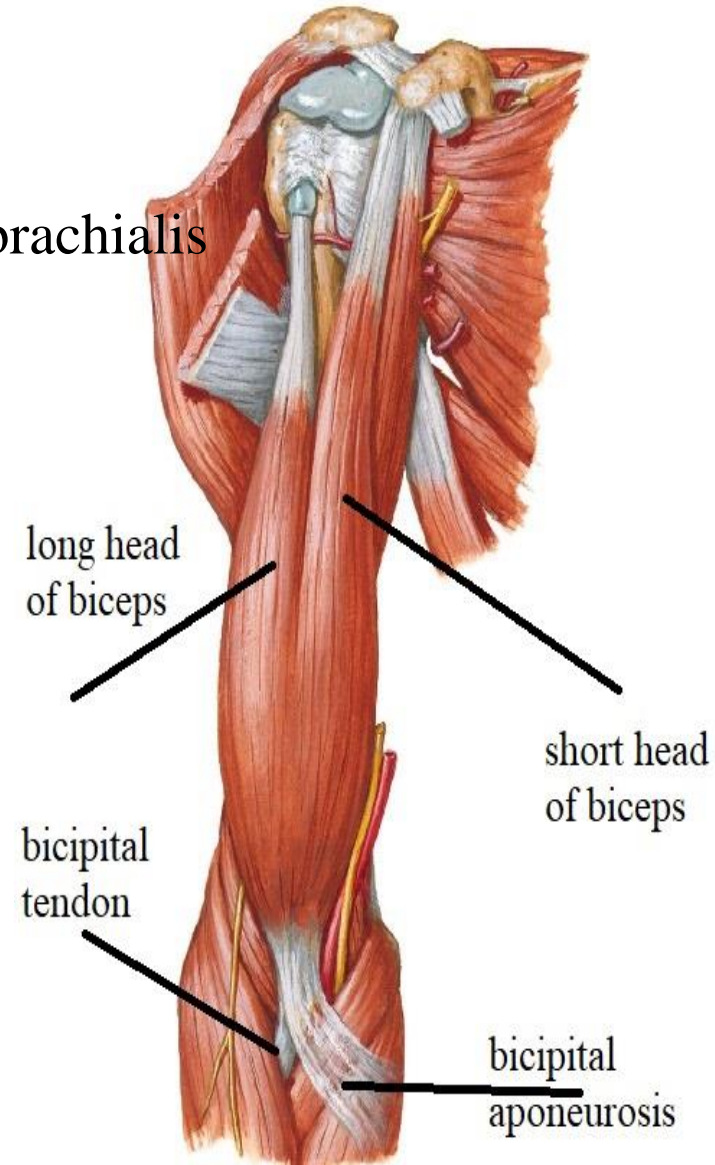
By aponeurosis:- passes downward & medially to deep fascia of forearm.

Action:- flexion of forearm

supination of flexed forearm

flexion of shoulder

Nerve supply:- Musculocutaneous n.



MUSCULOCUTANEOUS NERVE

Origin:- from lateral cord of brachial plexus

Root value: (C5, 6,7)

Course & relations:

Pierce the Coracobrachialis to enter the arm

Pass () biceps & brachialis

appears lateral to tendon of biceps

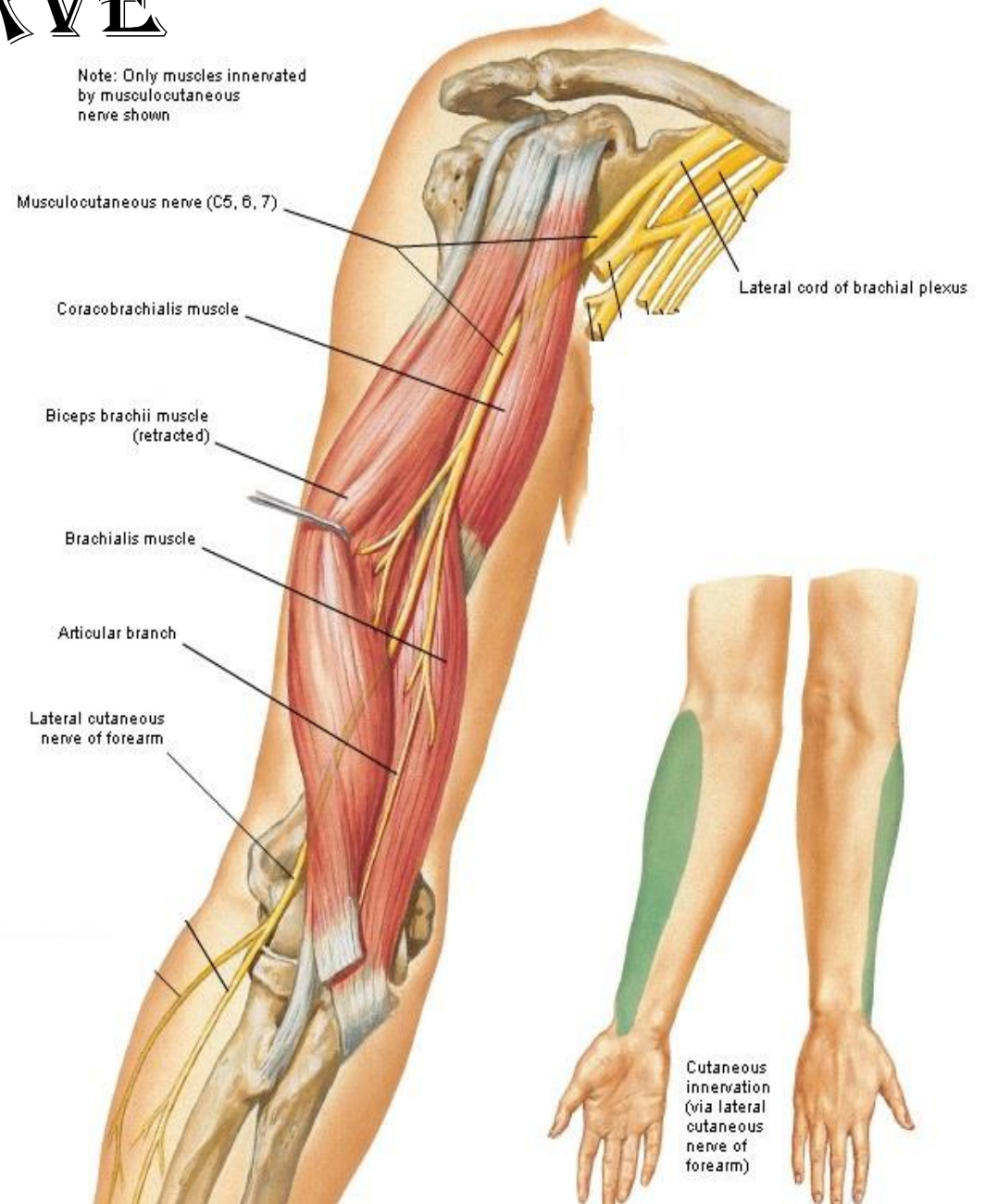
Pierce the deep fascia to Continues as lateral cutaneous n. of forearm.

Branches:

Muscular :- Coracobrachialis:- before piercing it

Biceps:- branch to each head

Brachialis



MUSCULOCUTANEOUS NERVE

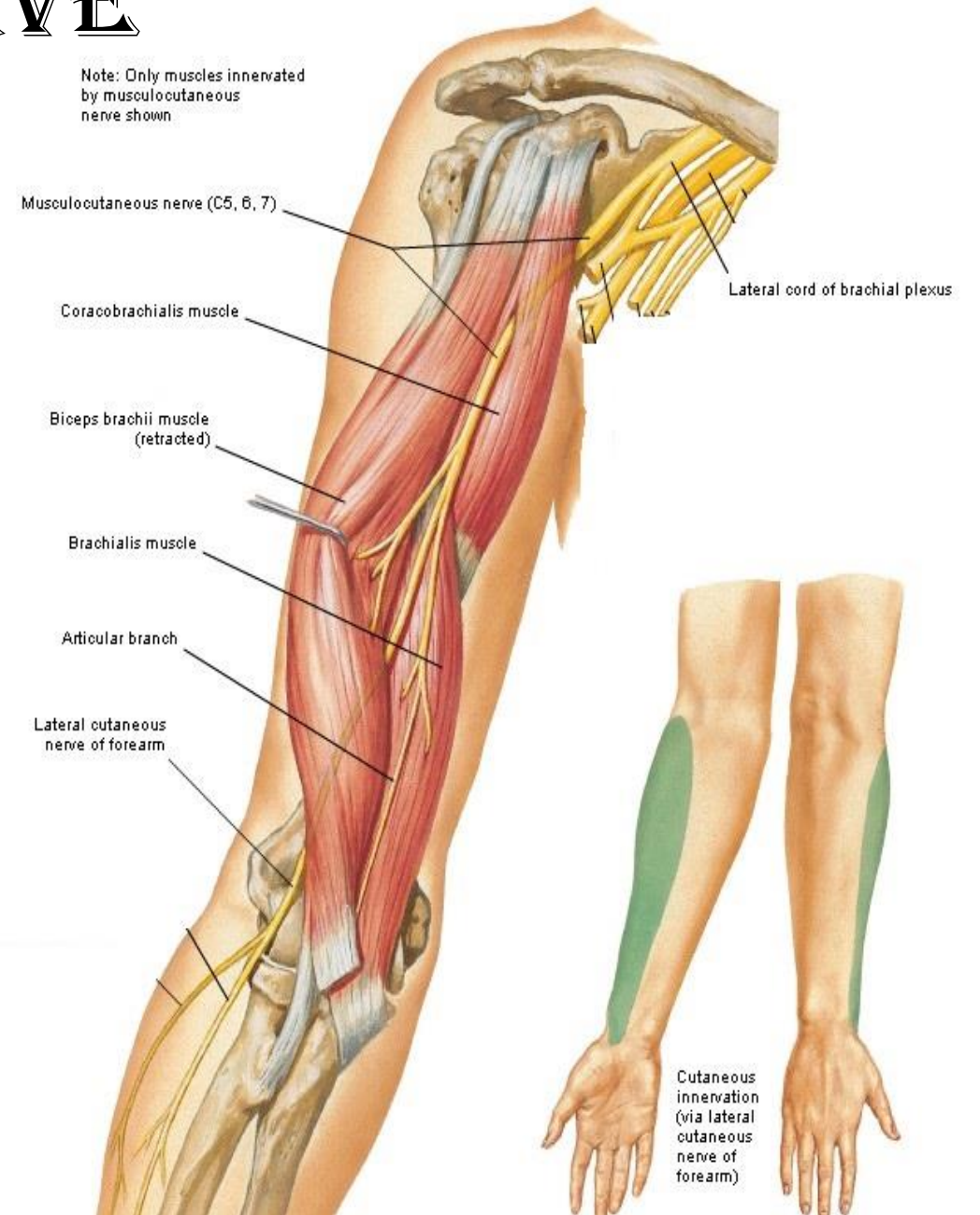
Branches:

Articular :-

elbow joint :- through nerve to brachialis
shoulder joint

Cutaneous :-

lateral cutaneous n. of forearm
that supply skin of lateral side of forearm



MUSCLES OF THE ARM

MUSCLE OF THE POST. COMPARTMENT

Triceps

Origin:- 3 heads

Medial head:- from lower 1/2 of back of humerus below spiral groove.

Lateral head:- from oblique line above the spiral groove

Long head:- from infra- glenoid tubercle.

Position of the heads :-

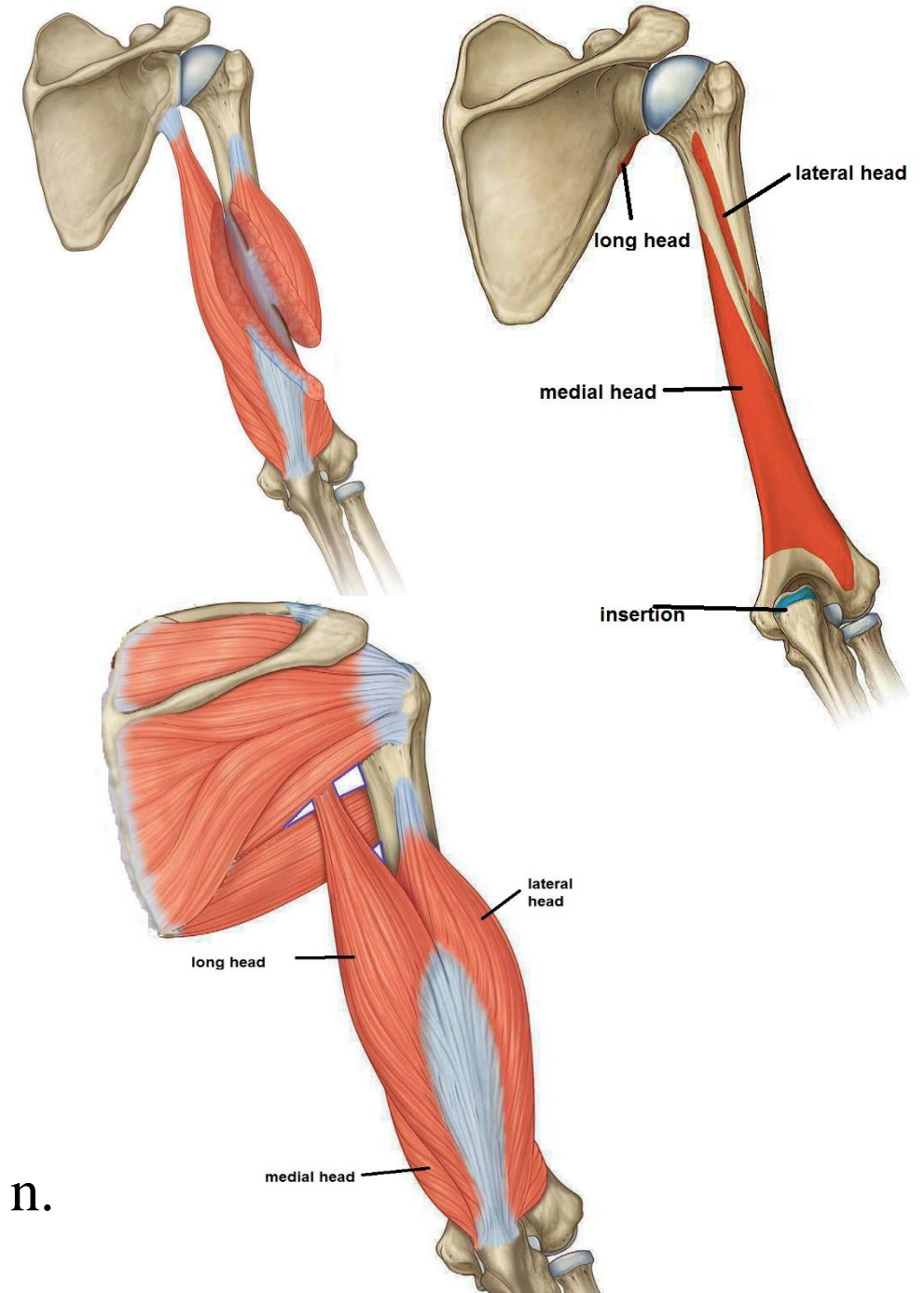
the medial head lies deep

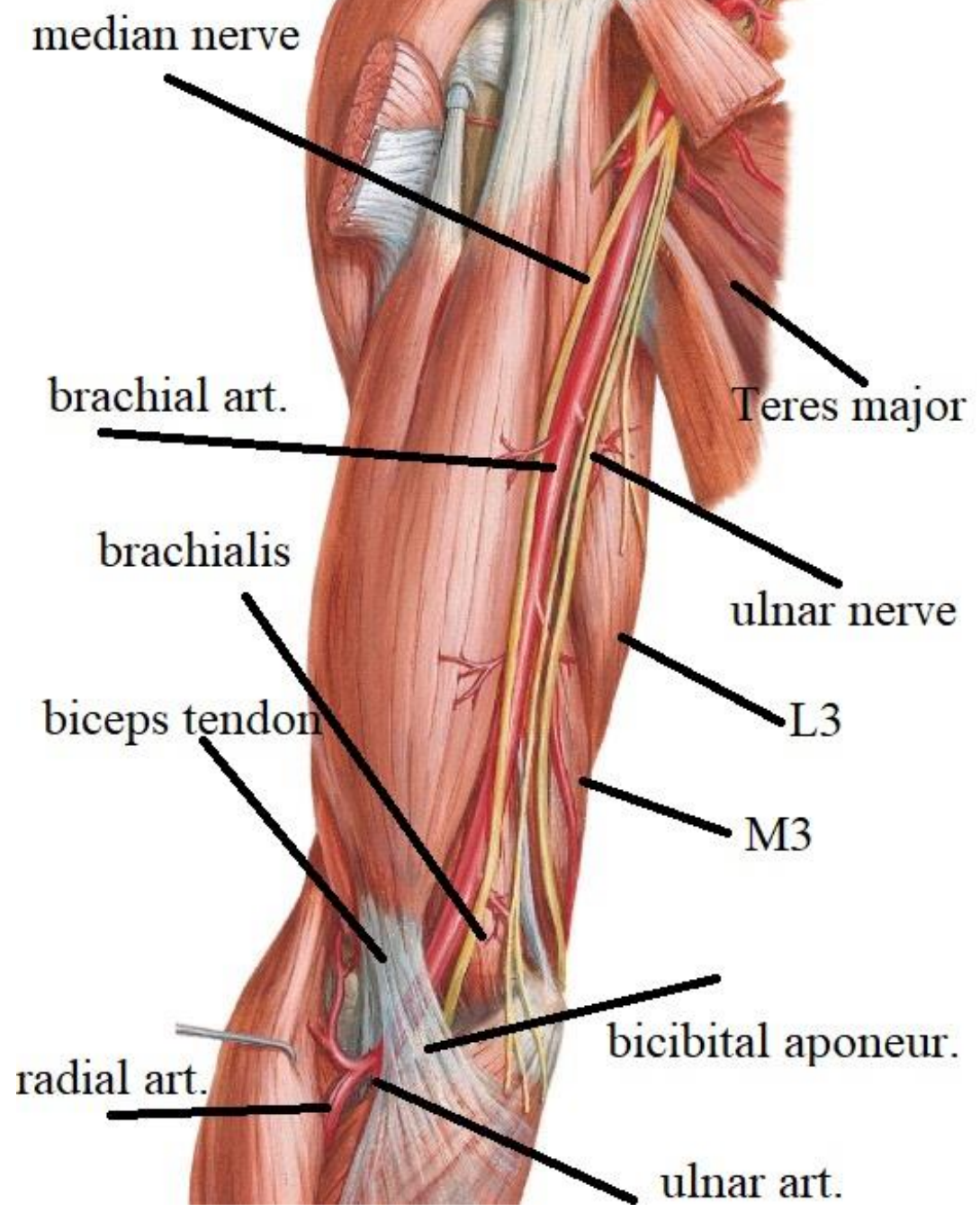
The lateral head is superficial & lateral

the long head is superficial & medial

Insertion:- Upper surface of olecranon process

Action:- main extensor of elbow **Nerve supply:-** Radial n.





THE BRACHIAL ARTERY

Origin: at lower border of teres major as continuation of axillary art.

Course: -

upper part descends medial to humerus

(So to stop the bleeding press the artery laterally)

While lower part descends ant. to humerus

(So to stop the bleeding press the artery backwards)

End: opposite neck of radius by dividing into
2 branches, radial & ulnar arteries

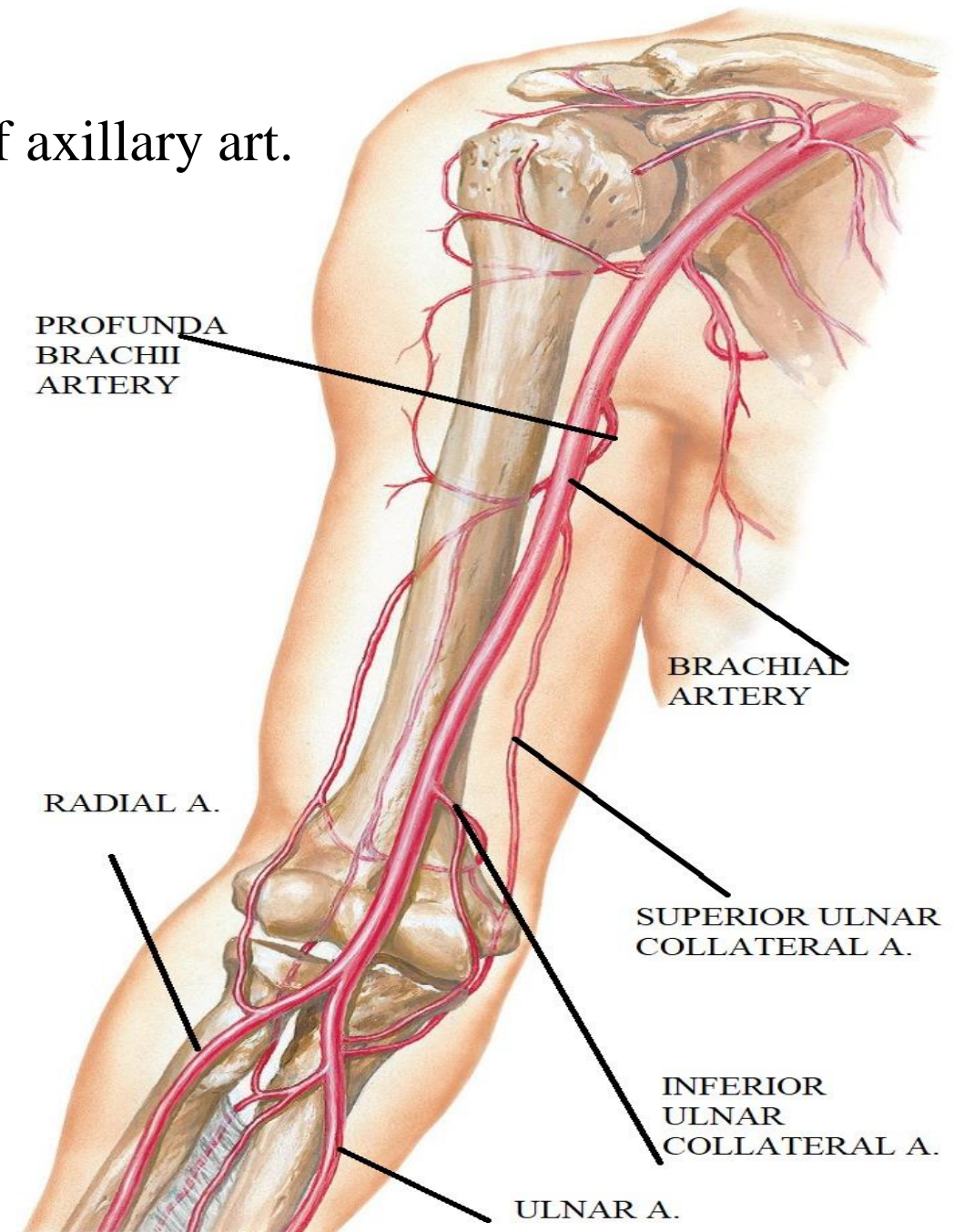
Relations:

Post. relations:

Long head of triceps

medial // // // .

Brachialis (separating it from humerus)



THE BRACHIAL ARTERY

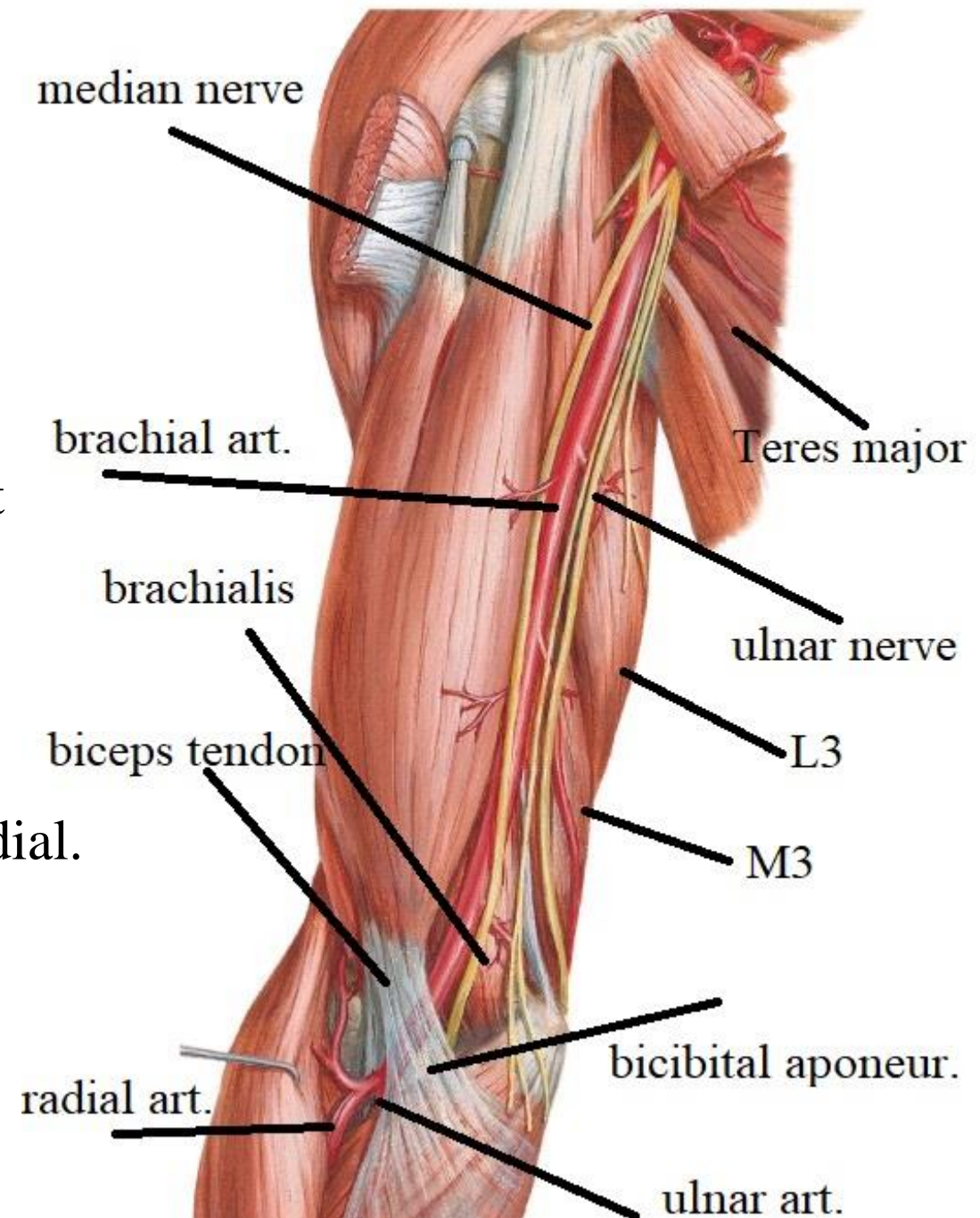
Relations:

lateral relations:

- Median n. lateral to upper part then crosses in front to be medial to lower part.
- Biceps tendon is lateral to the artery in the lower part (so palpate its pulsation medial to tendon of biceps).

ant. relations:

- skin & fascia throughout its course but
- Median n. crosses it at the middle from lateral to medial.
- lower most part is crossed by bicipital Aponeurosis which separate brachial art. & median n. deep to it from median cubital v. superficial to it.



THE BRACHIAL ARTERY

Relations:

medial relation:

ulnar n. is medial to upper part

median n. is medial to lower part.

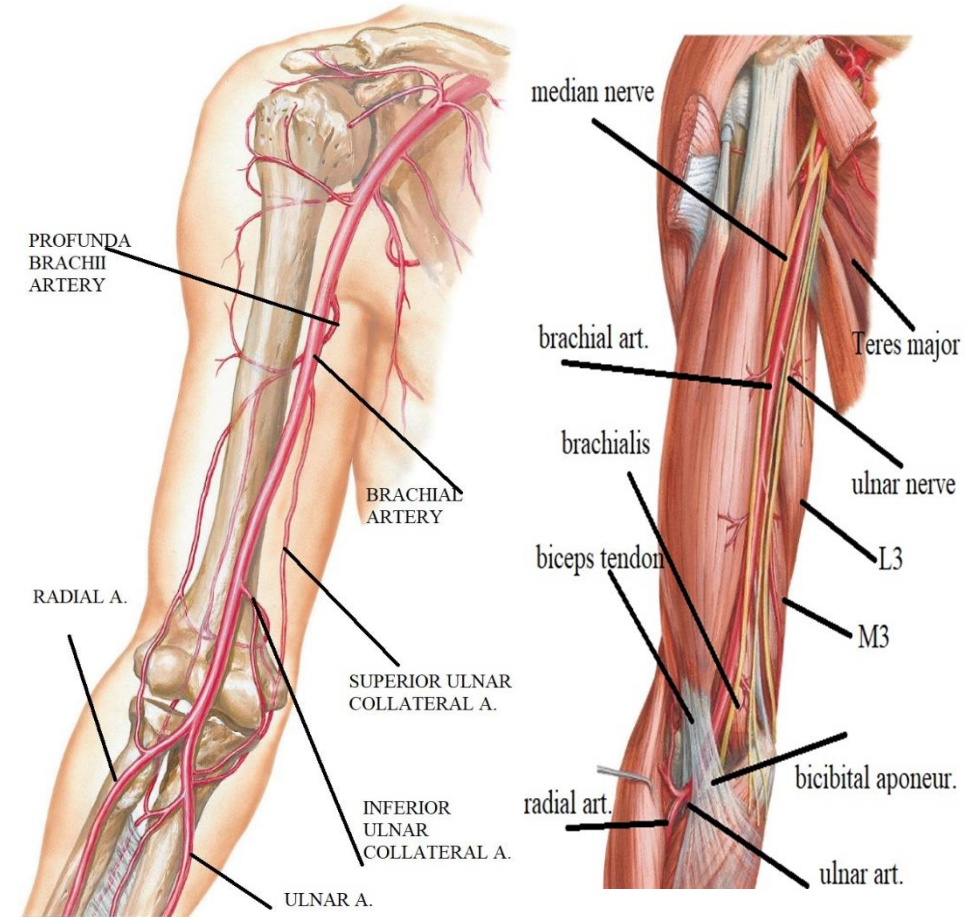
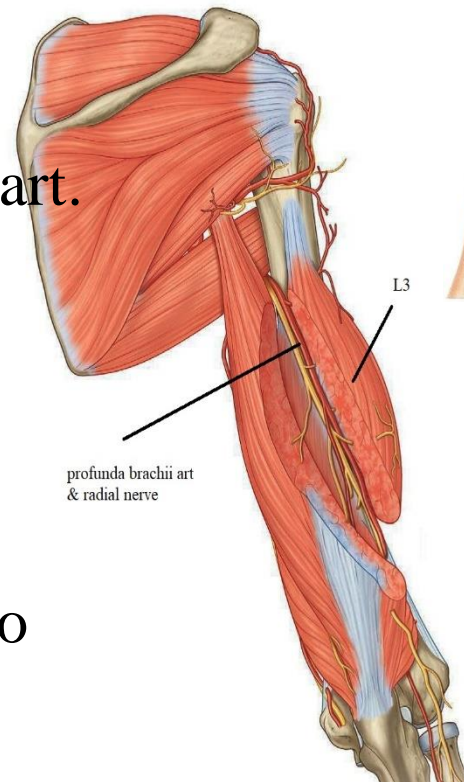
Branches:

1-profunda brachii artery:

O.: from posteromedial aspect of brachial art.
at lower border of teres major

C & R: enters the spiral groove on back
of humerus with radial n .
covered by lateral head of triceps.

end : in the spiral groove by dividing into
ascending & descending branches.



THE BRACHIAL ARTERY

Branches:

2- nutrient: - to humerus

3-superior ulnar collateral.

pass with ulnar n. behind medial epicondyle

4-inferior ulnar collateral.

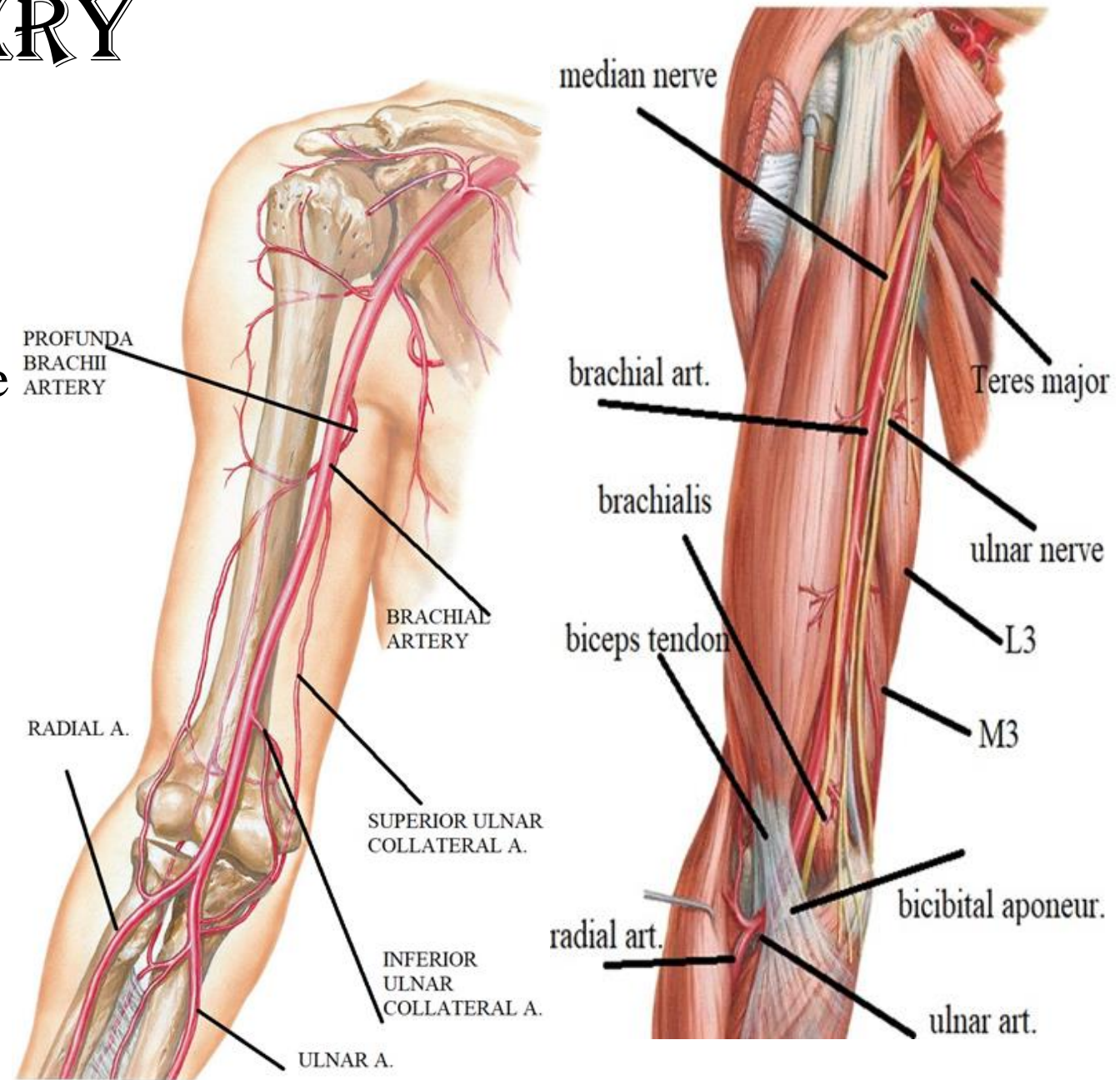
Divide into anterior & posterior branches
in relation to medial epicondyle

5-muscular branches:-

to muscles of anterior compartment

6-terminal branches:-

Radial & ulnar arteries



THANQ