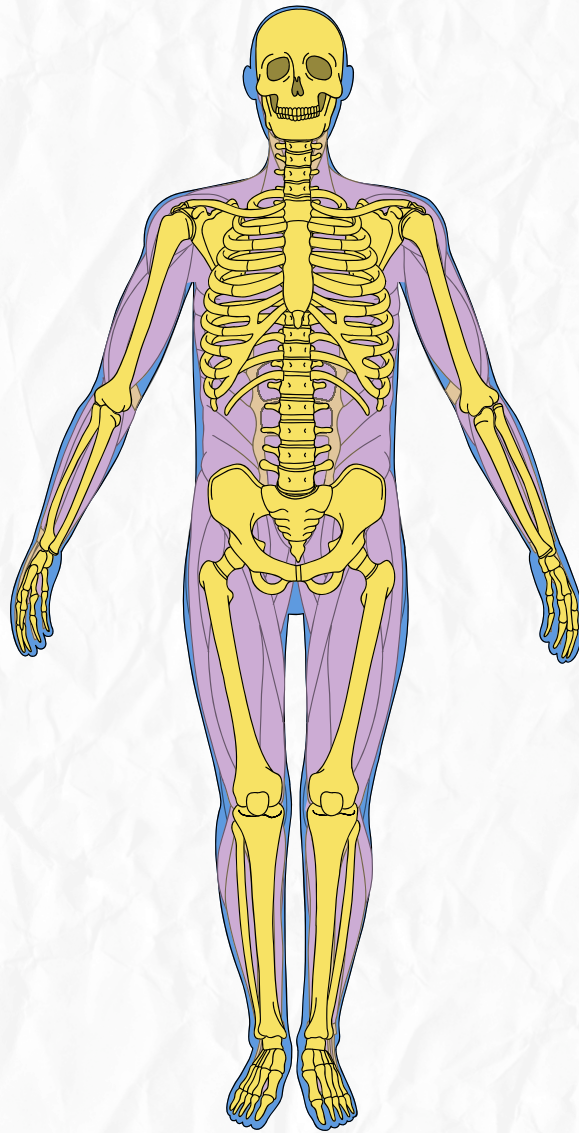


Physiology

Quiz time



Lec 8

Done by: Lamara Al Ayed

What is the principal percentage of hemoglobin as a constituent of Red :

?Blood Cells (RBCs)

- A) 10%
- B) 33%
- C) 50%
- D) 75%

?Q2: What are the normal hemoglobin levels for an infant at birth

- A) 11-14 gm/dl
- B) 13-18 gm/dl
- C) 20 gm/dl
- D) 12-16 gm/dl

:Q3: A hemoglobin molecule is composed of 4 Heme groups and

- A) 4 polypeptide chains (Globin)
- B) 2 alpha chains only
- C) 1 single globin chain
- D) Copper ions

?Q4: What is the primary role of hemoglobin in maintaining blood pH

- A) It acts as a digestive enzyme
- B) It acts as a blood buffer
- C) It decreases CO₂ production
- D) It increases blood acidity

?Q5: Which type of hemoglobin is predominant during fetal life

- A) Hb A (2 alpha, 2 beta)
- B) Hb A₂ (2 alpha, 2 delta)
- C) Hb F (2 alpha, 2 gamma)
- D) Hb S

:Q6: Anemia is defined as a decrease in

- A) Total blood volume only
- B) Hemoglobin concentration or RBC count below normal
- C) White blood cell count
- D) Blood flow velocity in arteries

?Q7: Which of the following is a common cause of Iron Deficiency Anemia

- A) High intake of red meat
- B) Chronic blood loss or increased demand (e.g., pregnancy)
- C) Vitamin B12 deficiency
- D) Bone marrow failure

Q8: What is the characteristic feature of Vitamin B12 Deficiency Anemia in
?blood tests

- A) Microcytic anemia
- B) Macrocytic hyperchromic anemia
- C) Normal RBC count with low Hb
- D) Increased blood viscosity

?Q9: How does anemia affect blood viscosity and the heart

- A) It increases viscosity and decreases heart load
- B) It decreases viscosity and increases cardiac output/heart load
- C) It has no effect on heart load
- D) It causes vasoconstriction and reduces venous return

Q10: "Favism" is a type of hemolytic anemia caused by a deficiency in
?which enzyme

- A) G6PD
- B) Carboxypeptidase
- C) Lipase
- D) Hexokinase

:Answer Key

B
C
A
B
C
B
B
B
B
A



سُبْحَانَكَ اللَّهُمَّ وَبِحَمْدِكَ ، أَشْهَدُ أَنْ لَا
إِلَهَ إِلَّا أَنْتَ ، أَسْتَغْفِرُكَ وَأَتُوبُ إِلَيْكَ .