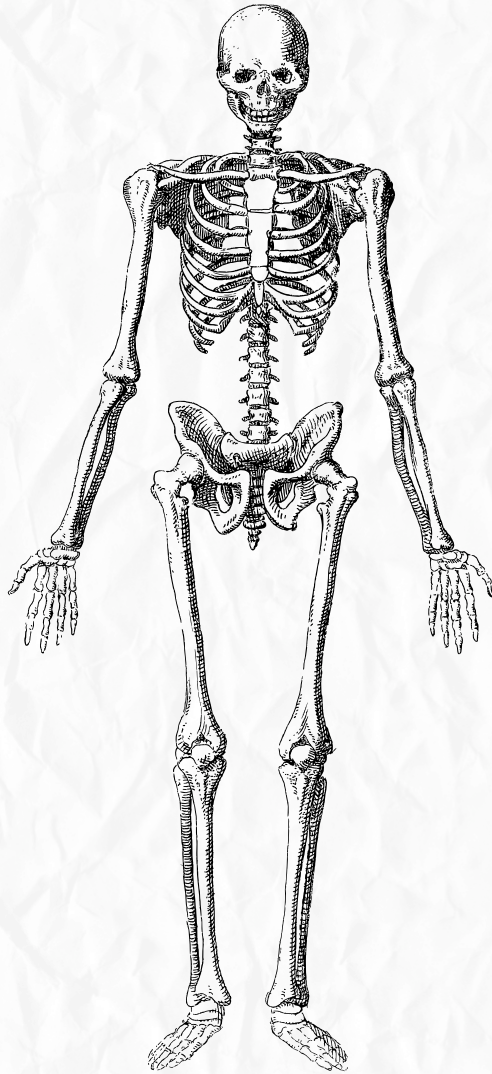


Anatomy

Quiz time



Upper limb bone

Done by: Lana Rasheed

?Which carpal bone articulates medially with the thumb and creates a highly mobile joint

- A.Trapezium
- B.Hamate
- C.Capitate
- D.Trapezoid

Ans:A

?Which border of the scapula is described as 'smooth and curved without a fossa

- A.Superior border
- B.Medial border
- C.Inferior angel
- D.Lateral border

Ans:B

?The 'Brachium' refers to which specific region of the upper limb

- A.The forearm (between elbow and wrist)
- B.The shoulder girdle
- C.The arm (between shoulder and elbow)
- D.The hand

Ans:C

?In which position is the palm of the hand facing DOWNWARDS

- A.Pronation
- B.Extension
- C.Abduction
- D.Supination

Ans:A

?What is the primary function of the 'hook' of the hamate bone

- .A.It articulates with the radius to form the wrist joint
- .B.It is the primary site for the scaphoid-lunate articulation
- .C.It acts as a physical pulley for flexor tendons on the palmar surface
- .D.It provides an attachment for the triceps muscle

Ans:C

?Which of the following describes the 'Anatomical Snuffbox' location

- .A. Medial side of the wrist near the pisiform
- .B. Posterior surface of the elbow near the olecranon
- .C. Anterior surface of the forearm near the radial tuberosity
- .D. Lateral side of the wrist, where the scaphoid is located

Ans: D

Why are carpal bones used by medical professionals to estimate a person's age

- .A. They are initially cartilage and undergo gradual ossification over time
- .B. They grow in size every year until age 40
- .C. The number of bones increases from 8 to 27 as a person matures
- .D. They are the only bones that change shape after birth

Ans: A

During elbow flexion, which structure of the ulna docks into the corresponding fossa on the anterior humerus

- .A. Olecranon
- B. Coronoid process
- C. Radial head
- D. Styloid process

Ans: B

?Which landmark on the humerus serves as a pathway for the radial nerve

- A. Deltoid tuberosity
- B. Anatomical neck
- C. Intertubercular groove
- D. Radial groove

Ans: D

?How many phalanges are found in the thumb (Digit 1) of a single hand

- A.One
- B.Three
- C.Two
- D.Four

Ans:C

In the anatomical numbering of metacarpals, which finger is associated with ?Metacarpal 1

- A.Index finger
- B.Little finger
- C.Middle finger
- D.Thumb

Ans:D

?Which carpal bone is the largest and occupies a central position in the wrist

- A.Trapezium
- B.Triquetrum
- C.Capitate
- D.Trapezoid

Ans:C

Which carpal bone is uniquely described as a pea-shaped sesamoid bone ?found within a flexor tendon

- A.Hamate
- B.Scaphoid
- C.Pisiform
- D.Lunate

Ans:C

?The proximal radio-ulnar joint is classified as what type of synovial joint

- A.Pivot joint
- B.Saddle joint
- C.Hinge joint
- D.Ball and socket joint

Ans:A

Which process of the ulna forms the 'point' of the elbow and docks into a ?humeral fossa during extension

- A.Coronoid process
- B.Styloid process
- C.Radial tuberosity
- D.Olecranon

Ans:D

What connects the radius and ulna along their shafts, acting as a boundary for ?anterior and posterior compartments

- A.Synovial membrane
- B.Rotator cuff
- C.Articular disk
- D.Interosseous membrane

Ans:D

In the forearm, which bone is located laterally and increases in width as it ?moves distally

- A.Ulna
- B.Scaphoid
- C.Humerus
- D.Radius

Ans:D

?Which structure on the distal humerus is shaped like a pulley and articulates with the ulna

- A.Trochlea
- B.Coronoid fossa
- C.Capitulum
- D.Olecranon fossa

Ans:A

?Which landmark on the humerus is the specific insertion point for the deltoid muscle

- A.Deltoid tuberosity
- B.Greater tubercle
- C.Medial epicondyle
- D.Radial groove

Ans:A

?The clavicle is described as having a distinct shape resembling which letter

- A.V-shape
- B.L-shape
- C.C-shape
- D.S-shape

Ans:D

?What is the function of the glenoid cavity of the scapula

- .A.It protects the nerves and vessels passing through the suprascapular notch
- .B.It articulates with the clavicle to form the acromioclavicular joint
- .C.It serves as the attachment point for the pectoralis minor
- .D.It forms the glenohumeral joint by articulating with the head of the humerus

Ans:D

?On which surface of the scapula is the prominent, palpable ridge known as the 'spine' located

- A.Anterior surface
- B.Medial border
- C.Posterior surface
- D.Lateral border

Ans:C

?Which bone is considered the ONLY bony attachment between the upper limb and the trunk

- A.Humerus
- B.Scapula
- C.Clavicle
- D.Sternum

Ans:C



اللهم أنت ربي، وأنت إلهي، وأنت
مولاي تولني برحمتك واهدني
سواء السبيل، وارزقني من العلم
ما ترضى، وامن عليّ بالحفظ
السريع فلا أنسى ما أحفظ ولا أجهل
ما أفهم، أنت الكريم وأنت المعطي
وأنت الهادي يا رب