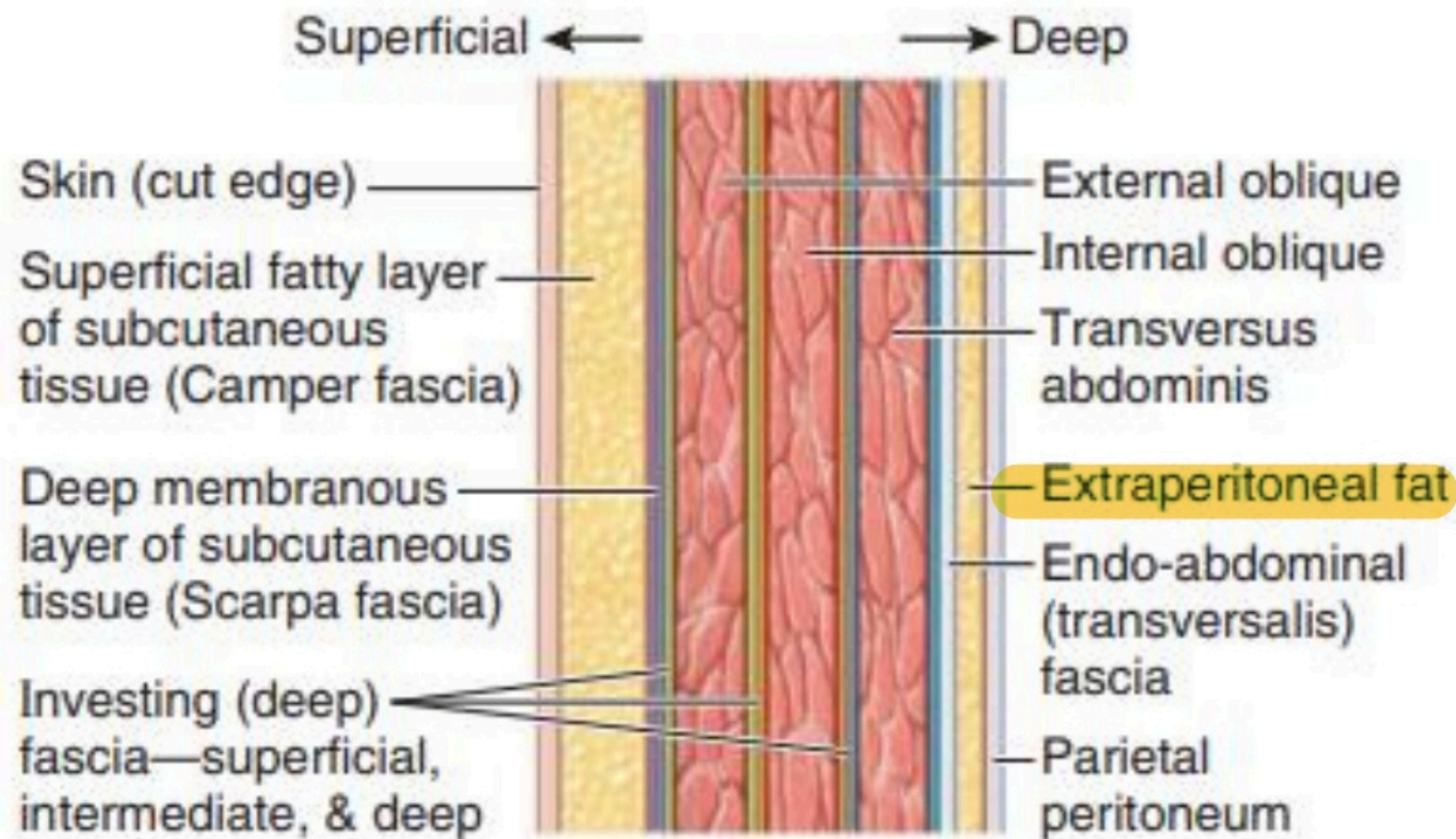
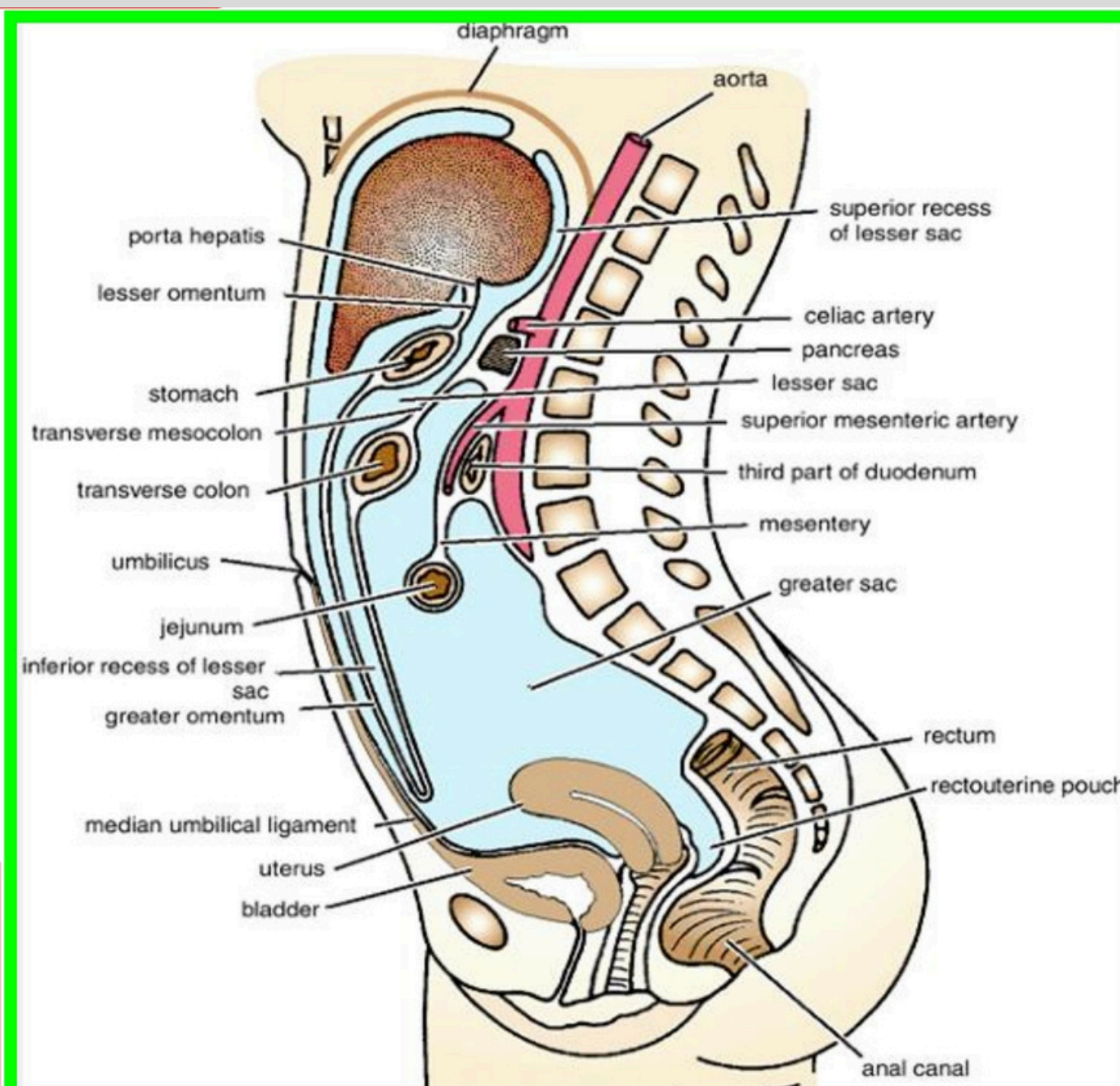


Lab anatomy 7

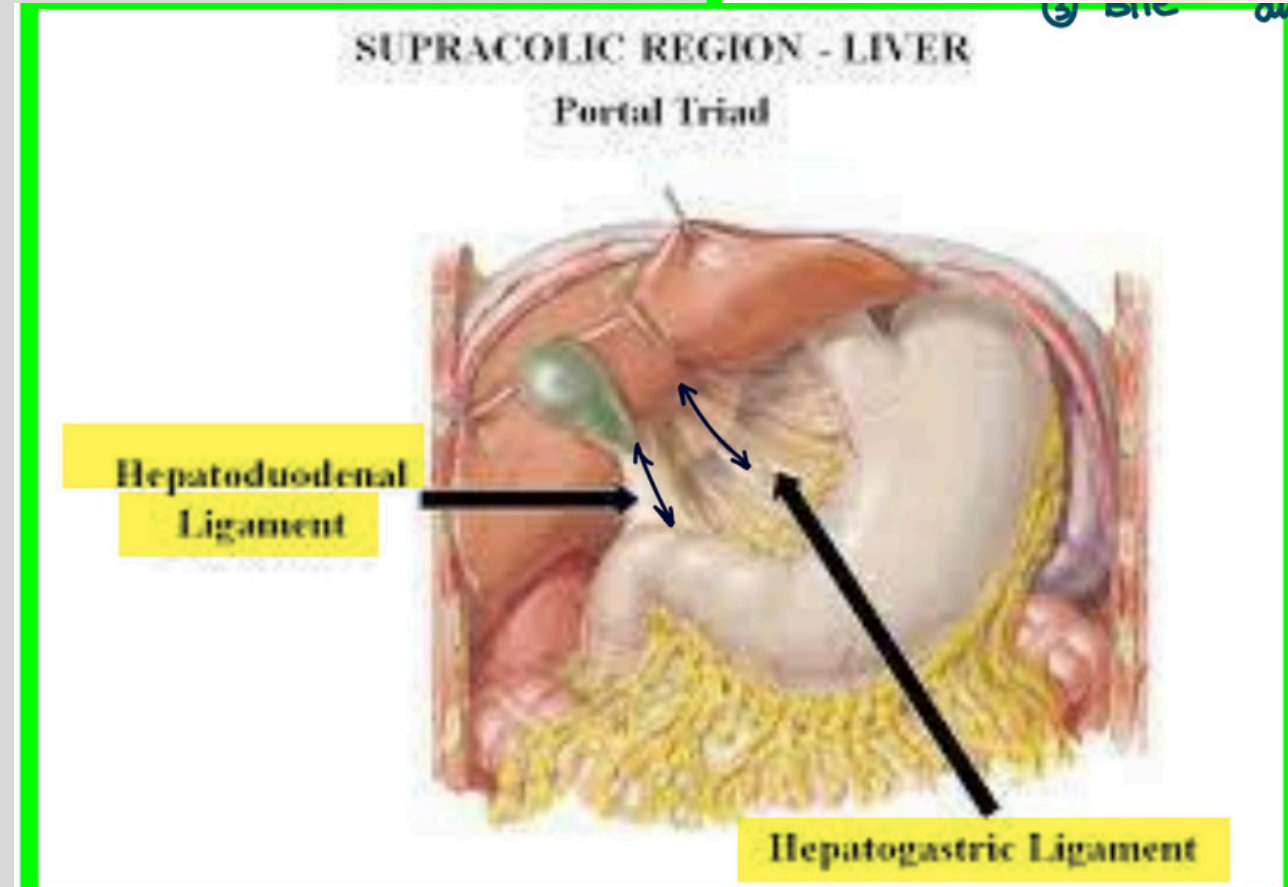
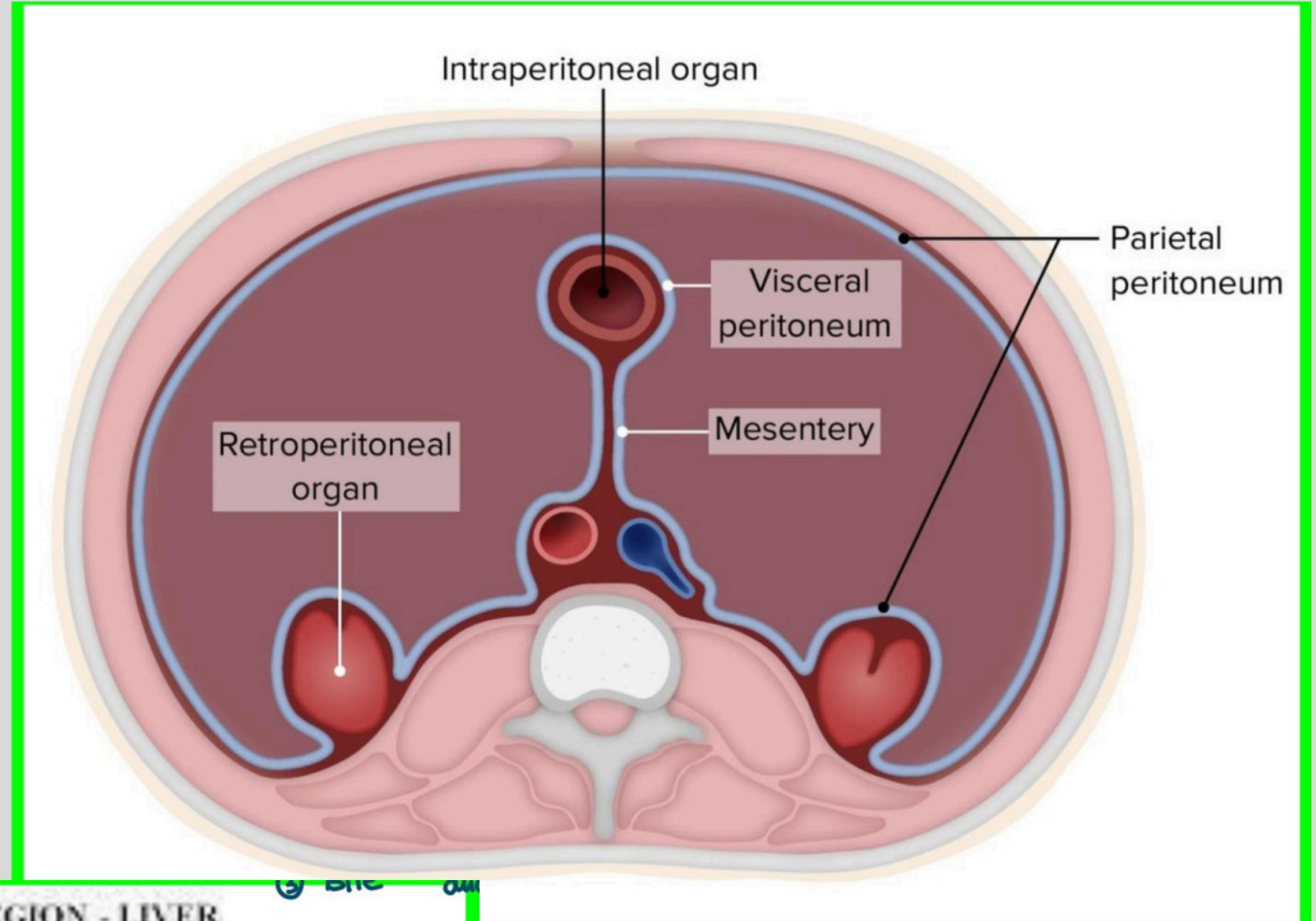
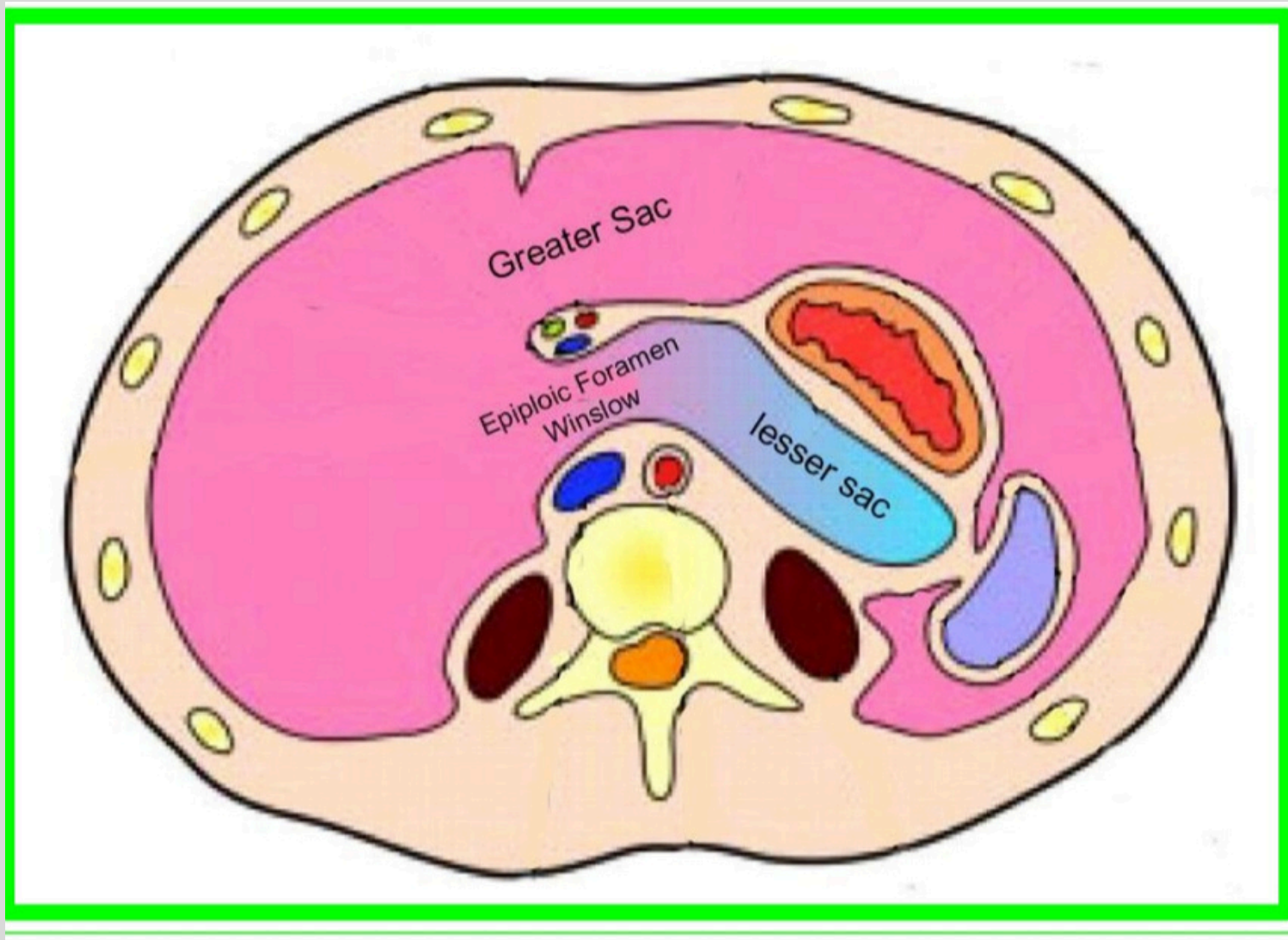




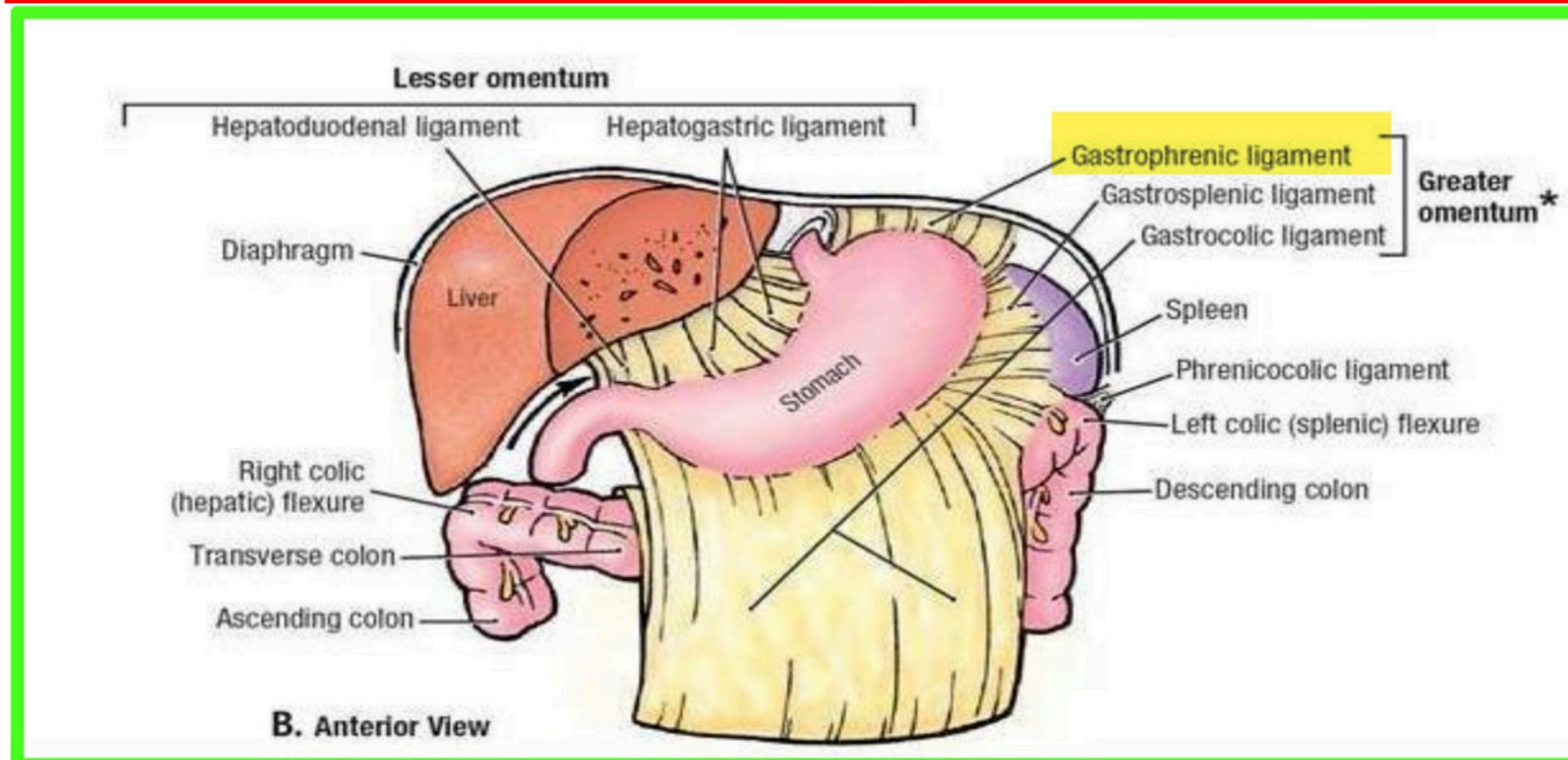
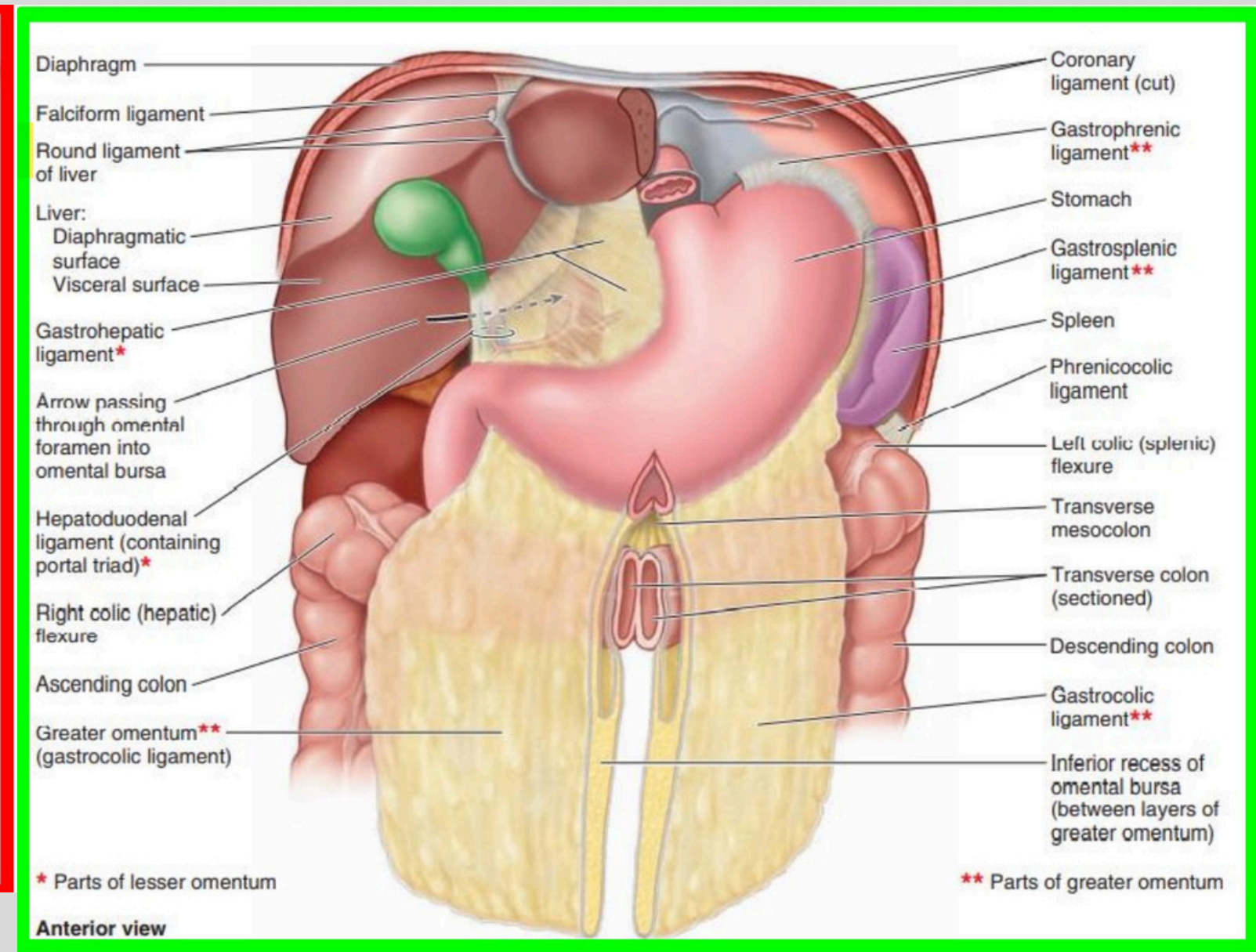
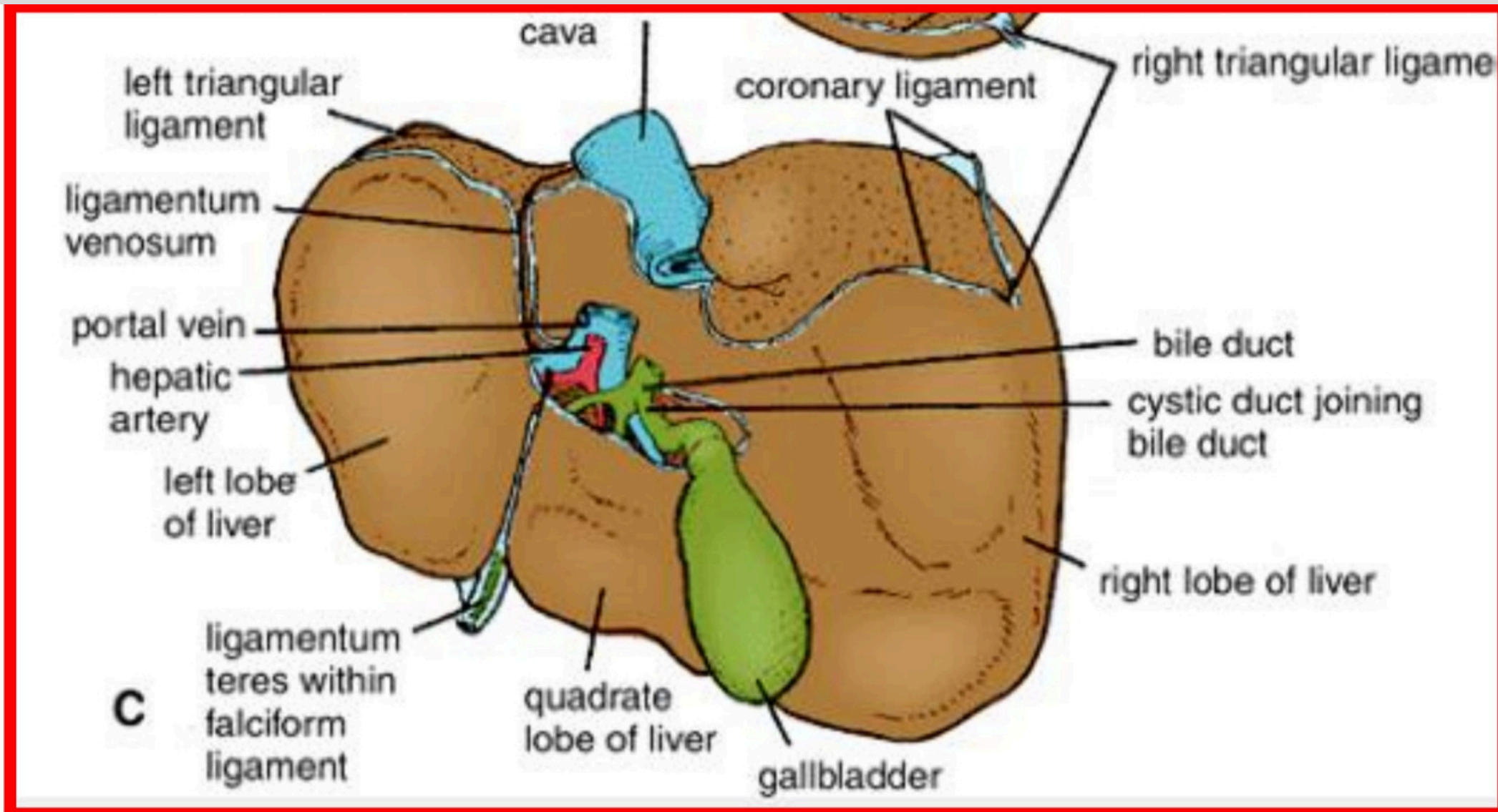
Longitudinal section

FIGURE 2.3. Fascia of anterior abdomi



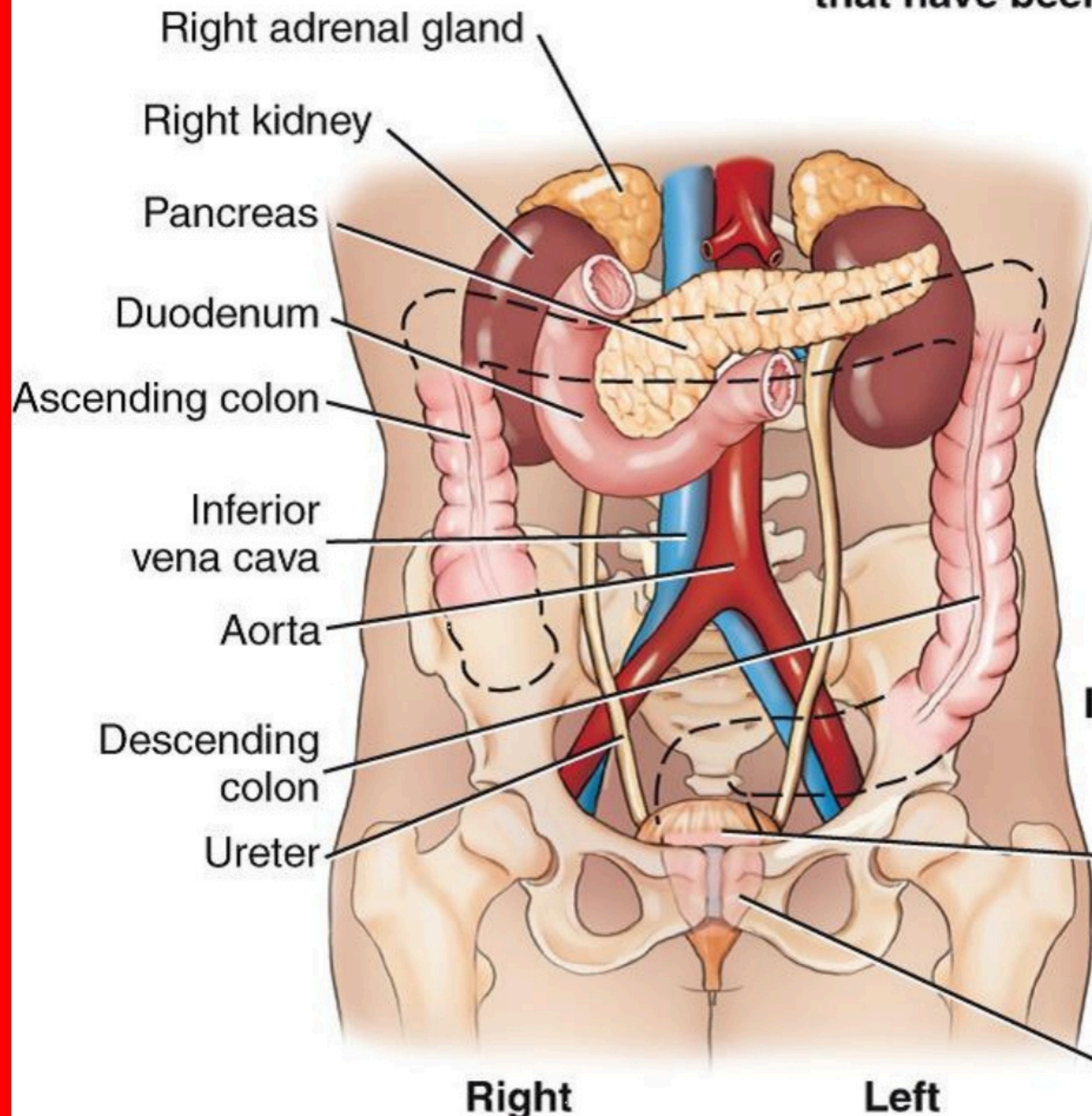


الطبيب والجراحة
لجنة



Retroperitoneal:

“Intra” peritoneal structures that have been removed:

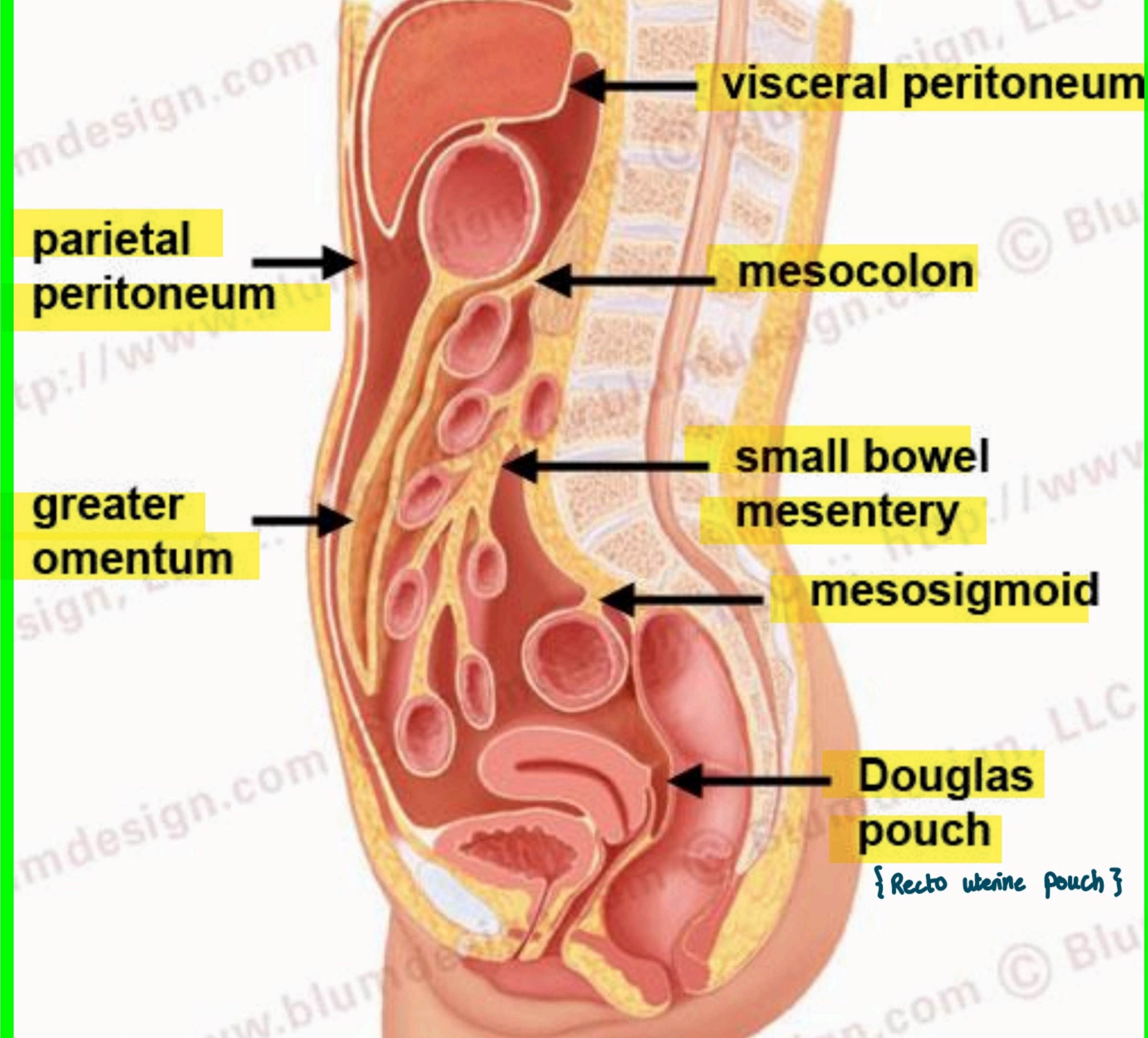


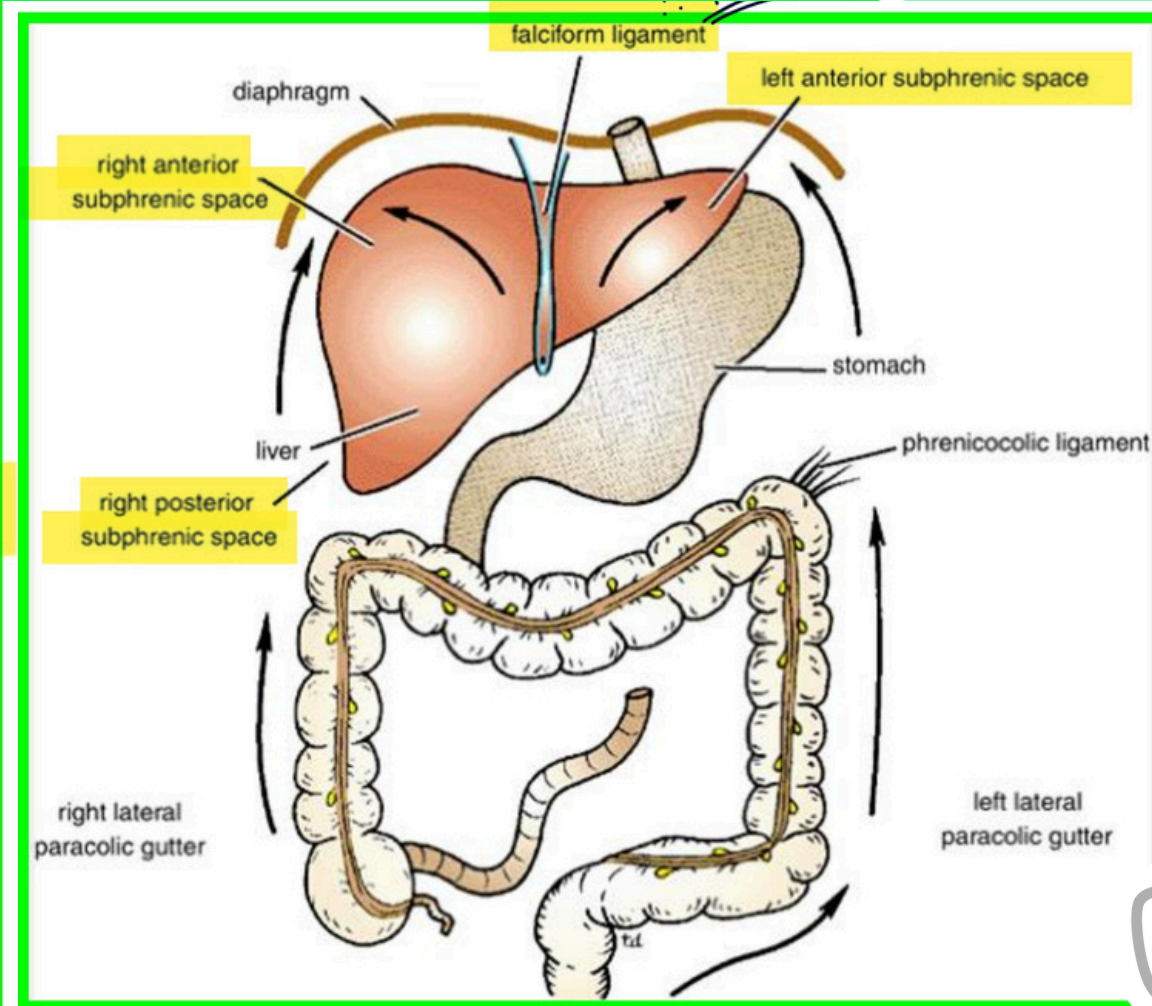
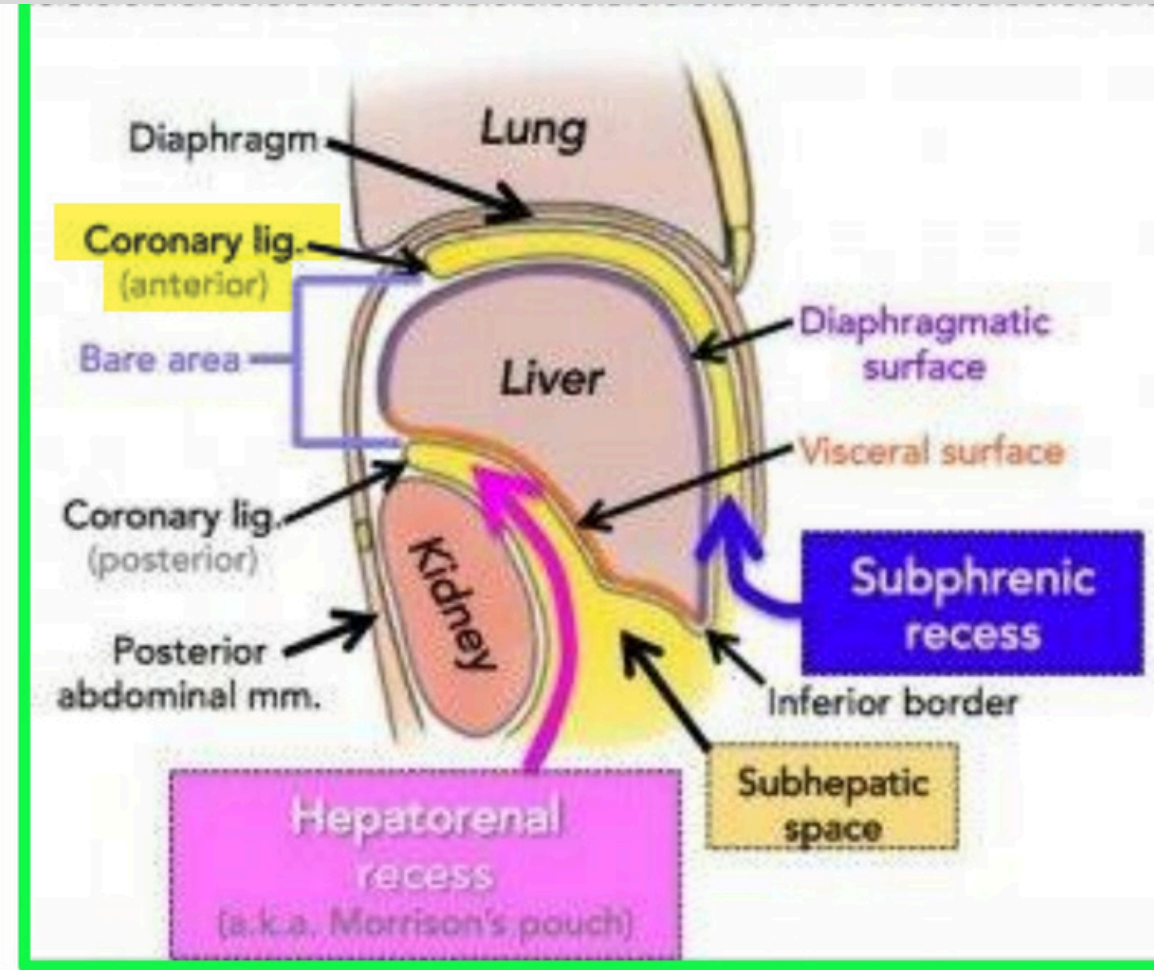
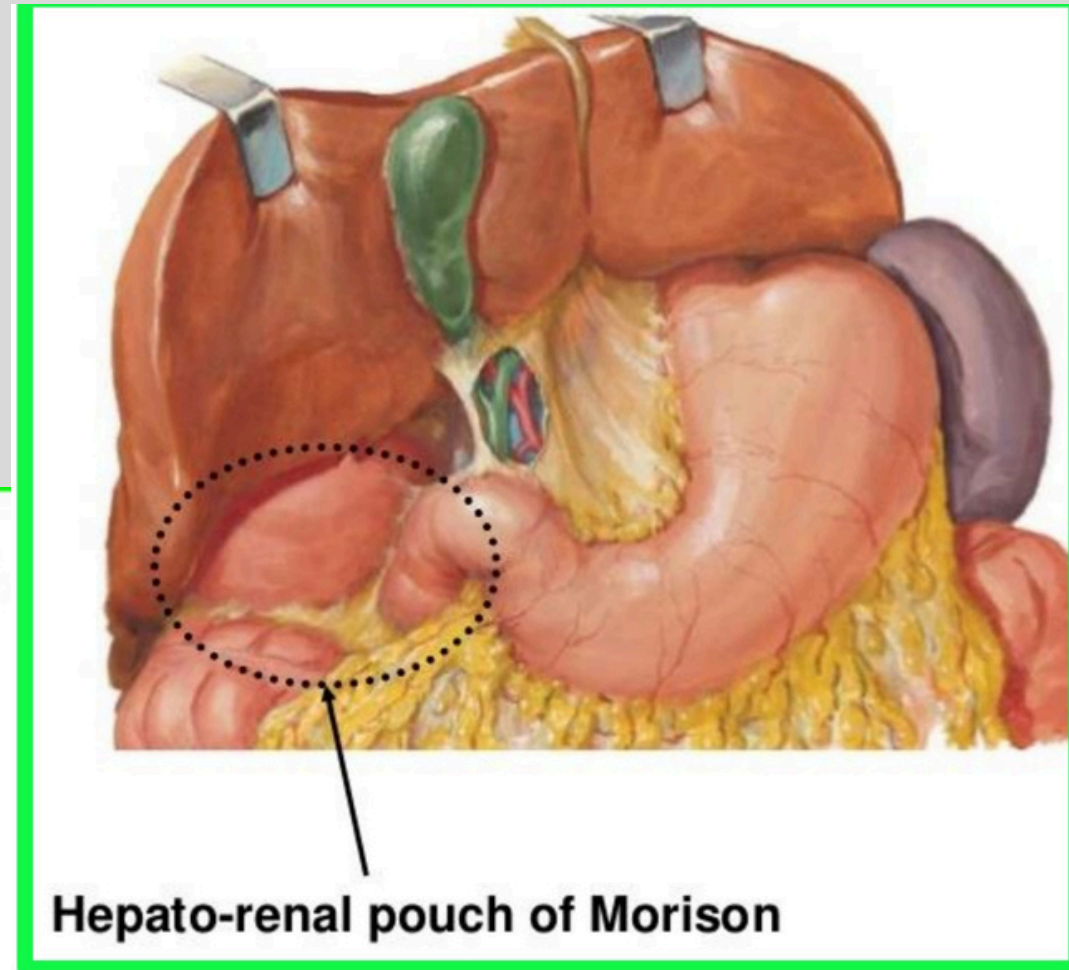
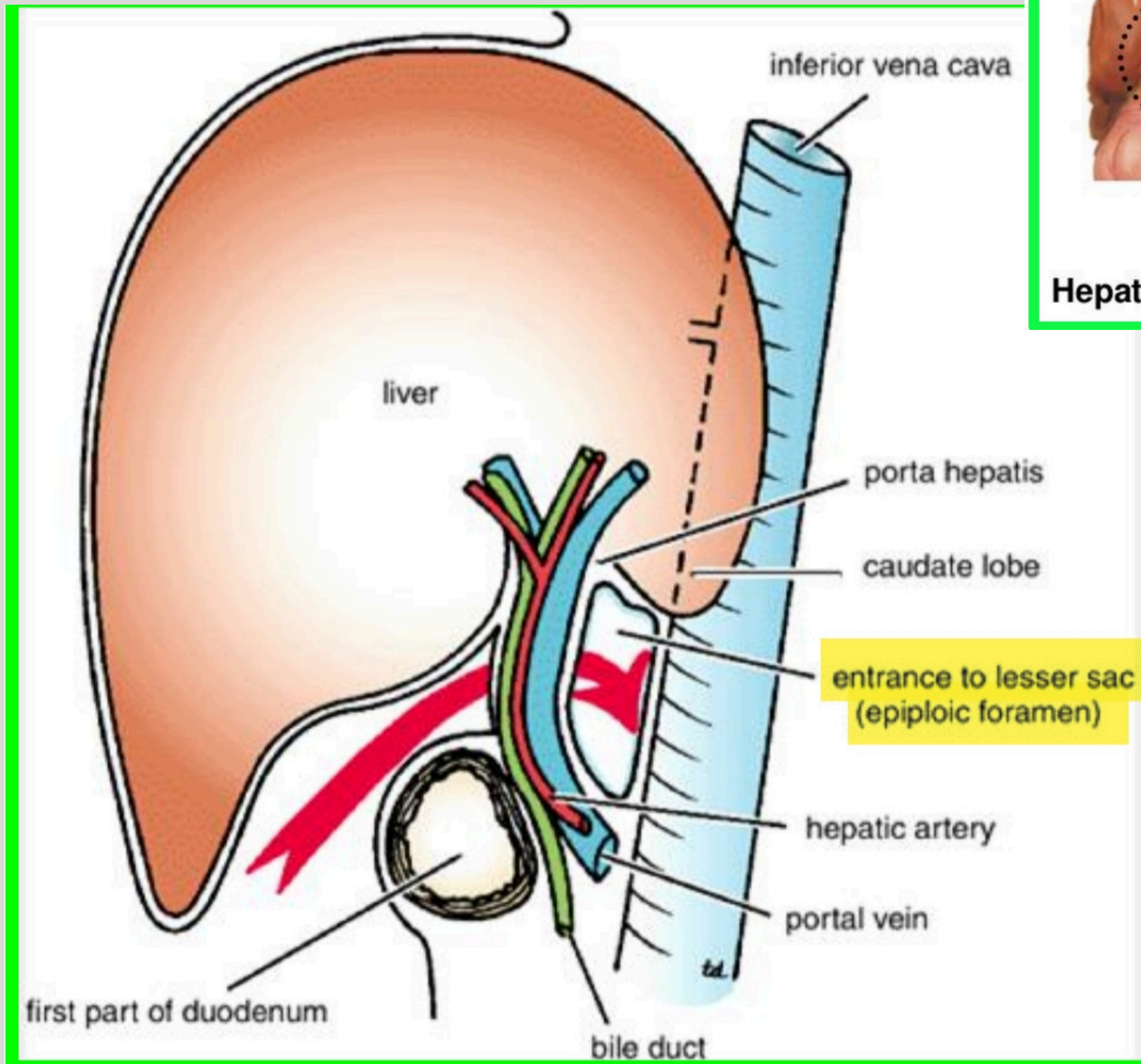
- Liver
- Gallbladder
- Spleen
- Stomach
- Jejunum
- Ileum
- Cecum
- Transverse and sigmoid colon

Infraperitoneal:

- Bladder (male reproductive organs)

(Lower rectum)



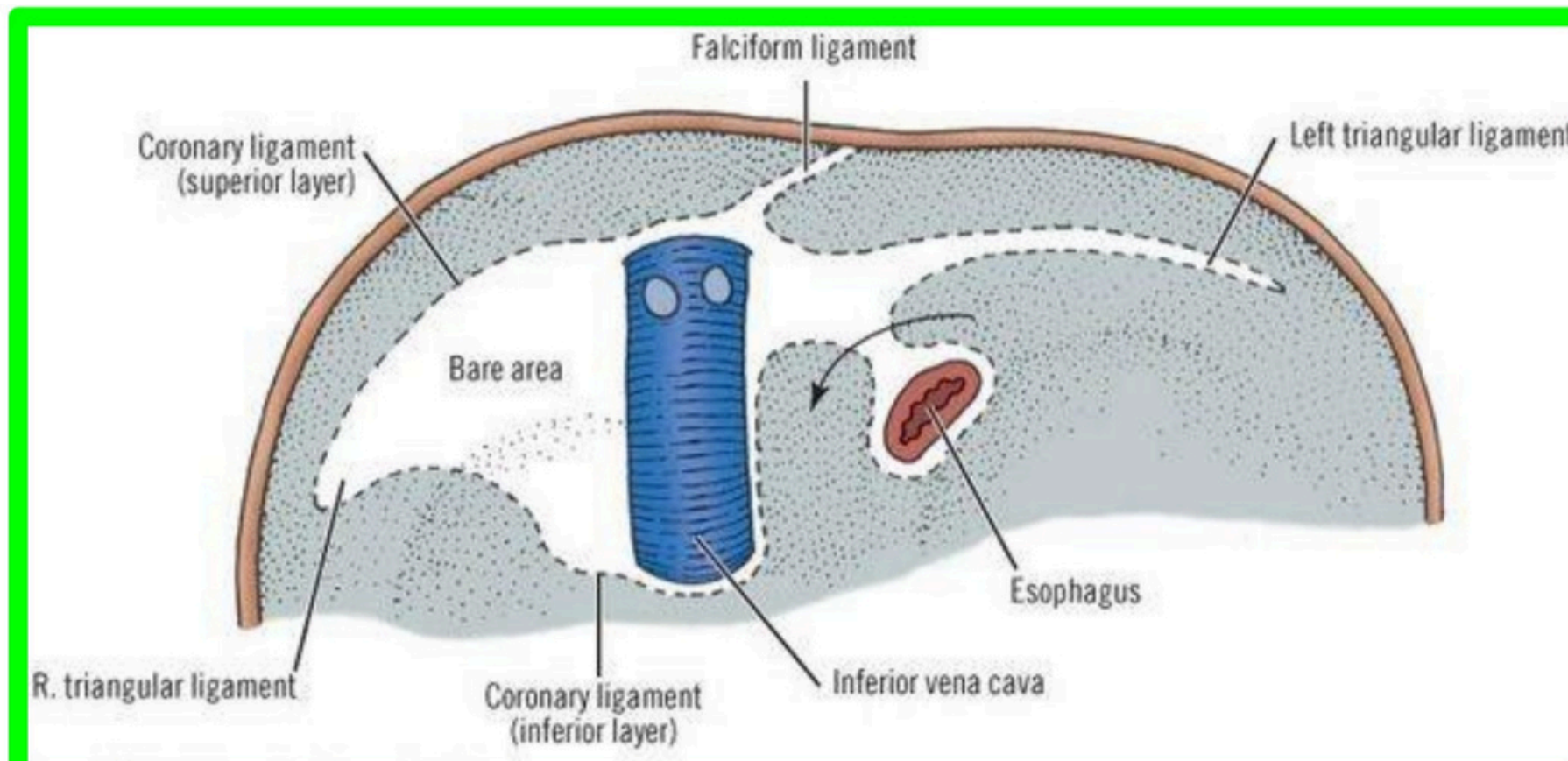


Subphrenic Spaces

Dr. Aiman AL - Maathidy
Monday 6 April 2026

28

This space is closed above by the inferior layer of the coronary ligament and the small right triangular ligament. To the right it is bounded by the abdominal surface of the diaphragm. On the left side the space communicates through the epiploic foramen with the lesser sac or left subhepatic space.

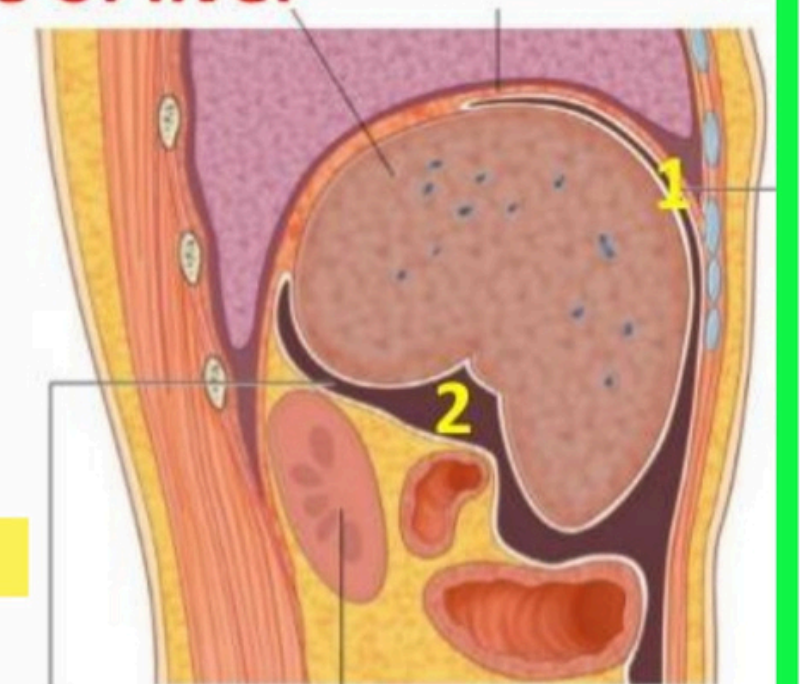


Diaphragmatic surface of liver

- 2 recesses have an important in this surface ...

- 1) The **subphrenic recess** separates the diaphragmatic surface of the liver from the diaphragm and is divided into right and left areas by the **falciform ligament**, a structure derived from the **ventral mesentery in the embryo**.

- 2) The **hepatorenal recess** is a part of the peritoneal cavity on the right side between the liver and the right kidney and right suprarenal gland.



Peritonitis and Ascites ???

Fluid in Omental Bursa ???

Abdominal Paracentesis ???

