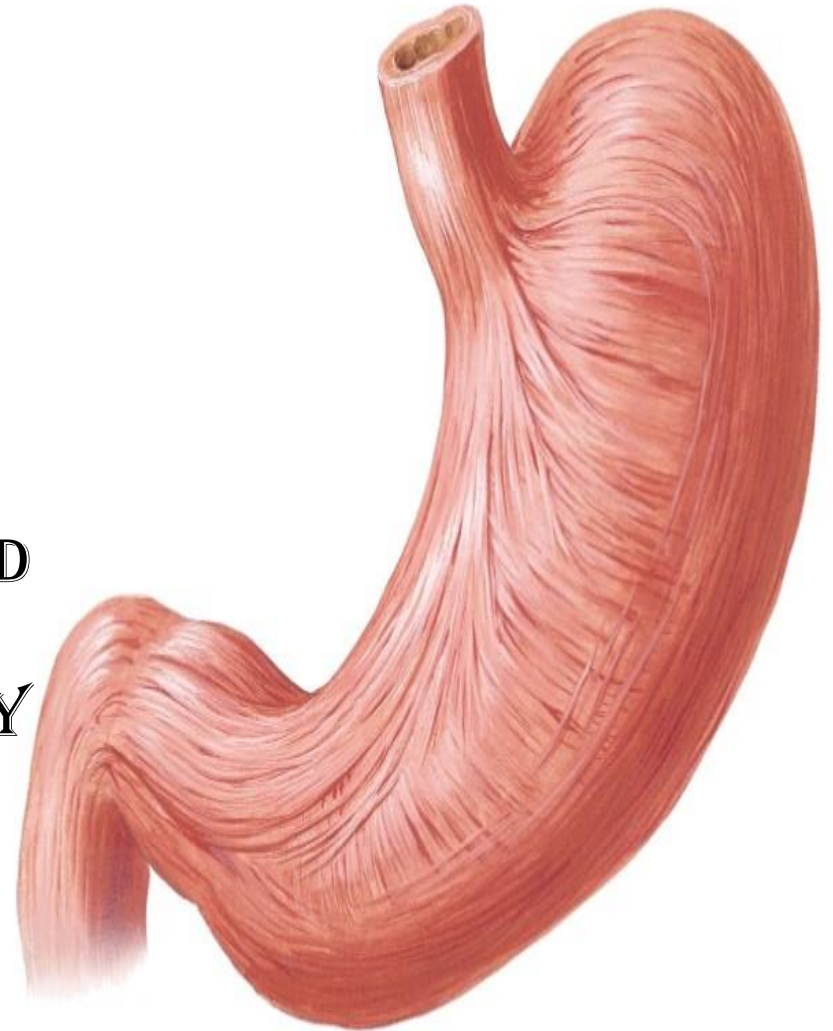


# OESOPHAGUS & STOMACH

BY

DR ABULMAATY MOHAMED  
ASSISTANT PROFESSOR  
ANATOMY & EMBRYOLOGY  
MUTAH UNIVERSITY





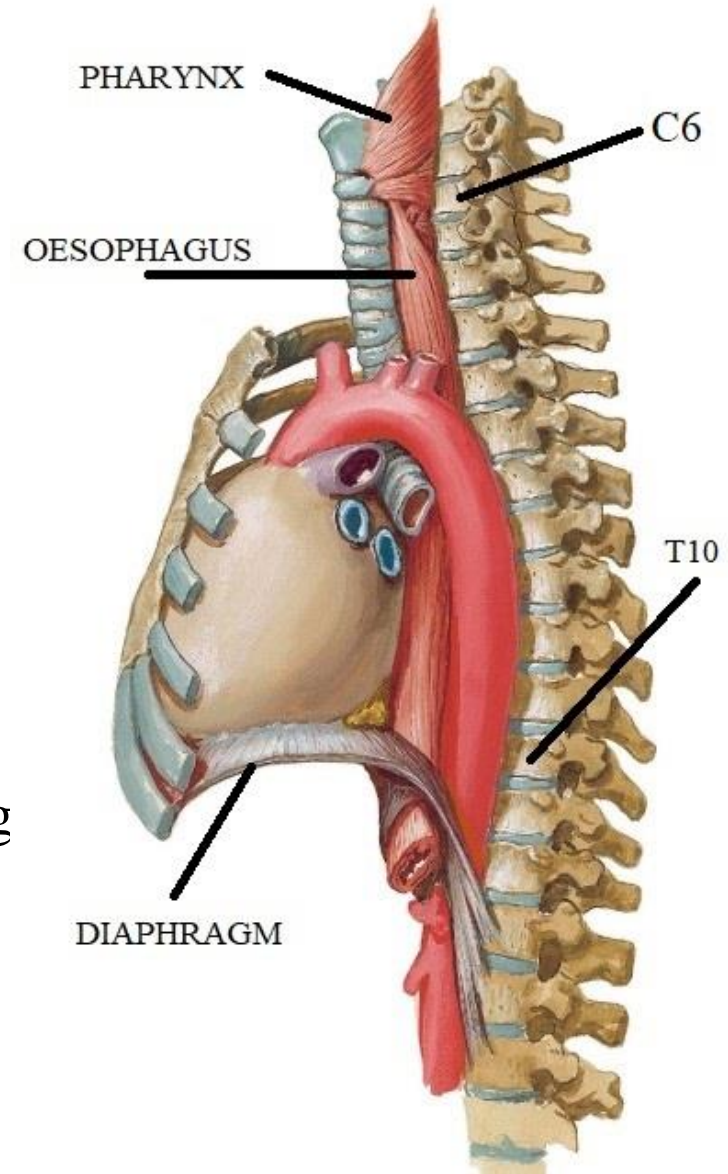
# OESOPHAGUS

# OESOPHAGUS

**Def.** It is a muscular tube 25 cm long with an average diameter 2 cm

## Course

- **Begins** at the level of 6<sup>th</sup> CV as continuation of pharynx
- It descends generally in a midline position as it moves in the thorax with an anterior to posterior curve
- as it approaches the diaphragm , it moves to the left
- Passes through oesophageal opening of diaphragm al level of 10<sup>th</sup> TV
- **Ends** at the level of the 11<sup>th</sup> TV at cardiac opening of stomach



# OESOPHAGUS

## relations

### Posteriorly:-

In the neck:- the vertebral column

In the thorax: the vertebral column

the thoracic duct

the descending thoracic aorta

### Anteriorly:-

In the neck:- the trachea

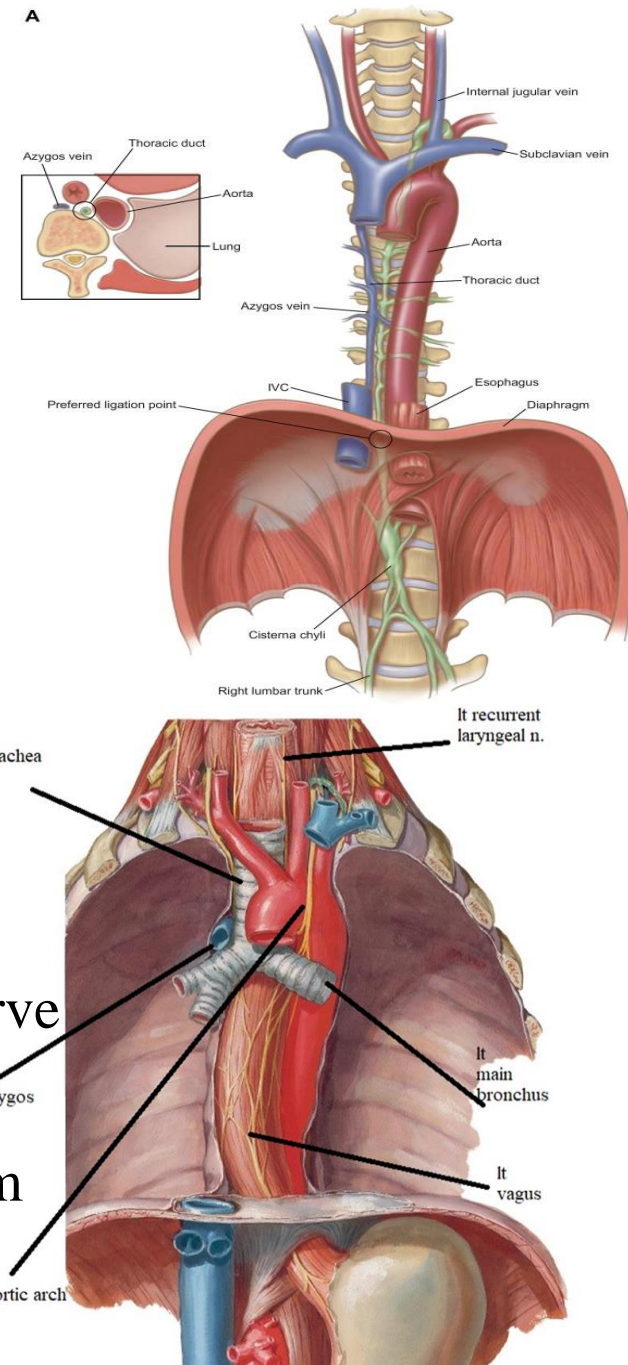
the recurrent laryngeal nerves

In the thorax :- the trachea

the left recurrent laryngeal nerve

the left main bronchus,

the pericardium, the left atrium



# OESOPHAGUS

## Relations

### Right side:

In the neck:- the right lobe of the thyroid gland

In the thorax:- the right pleura

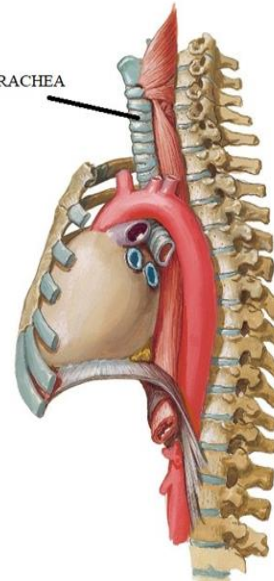
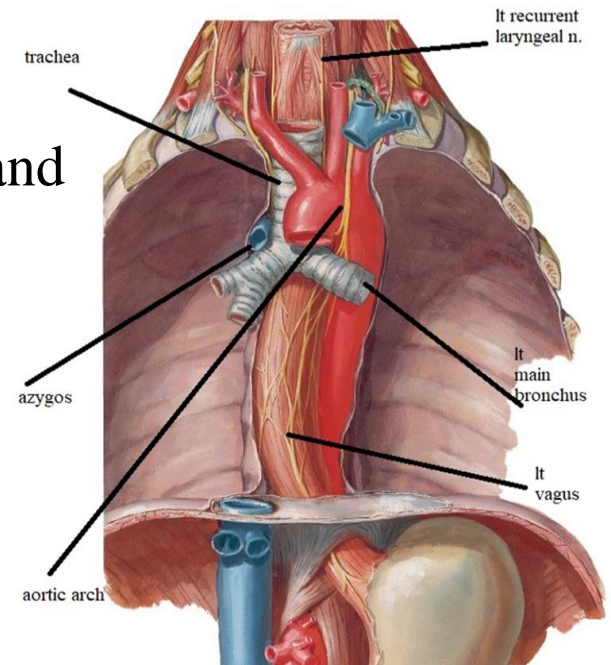
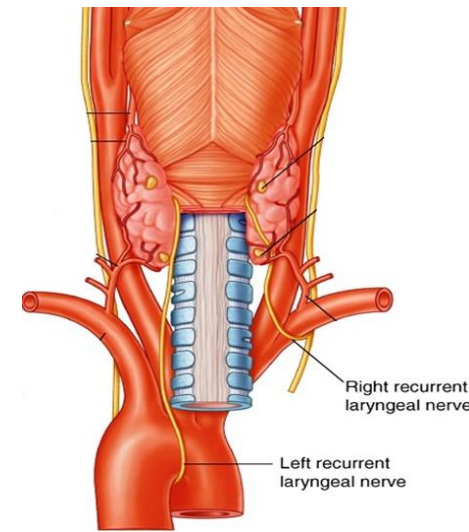
the terminal part  
of the azygos vein

### Left side:

In the neck:- the left lobe of the thyroid gland

In the thorax: the left pleura

the aortic arch



# OESOPHAGUS

## Constrictions:-

### 1-At Pharyngo oesophageal junction

approximately 15 cm  
from the incisor teeth

### 2-At Aortic arch

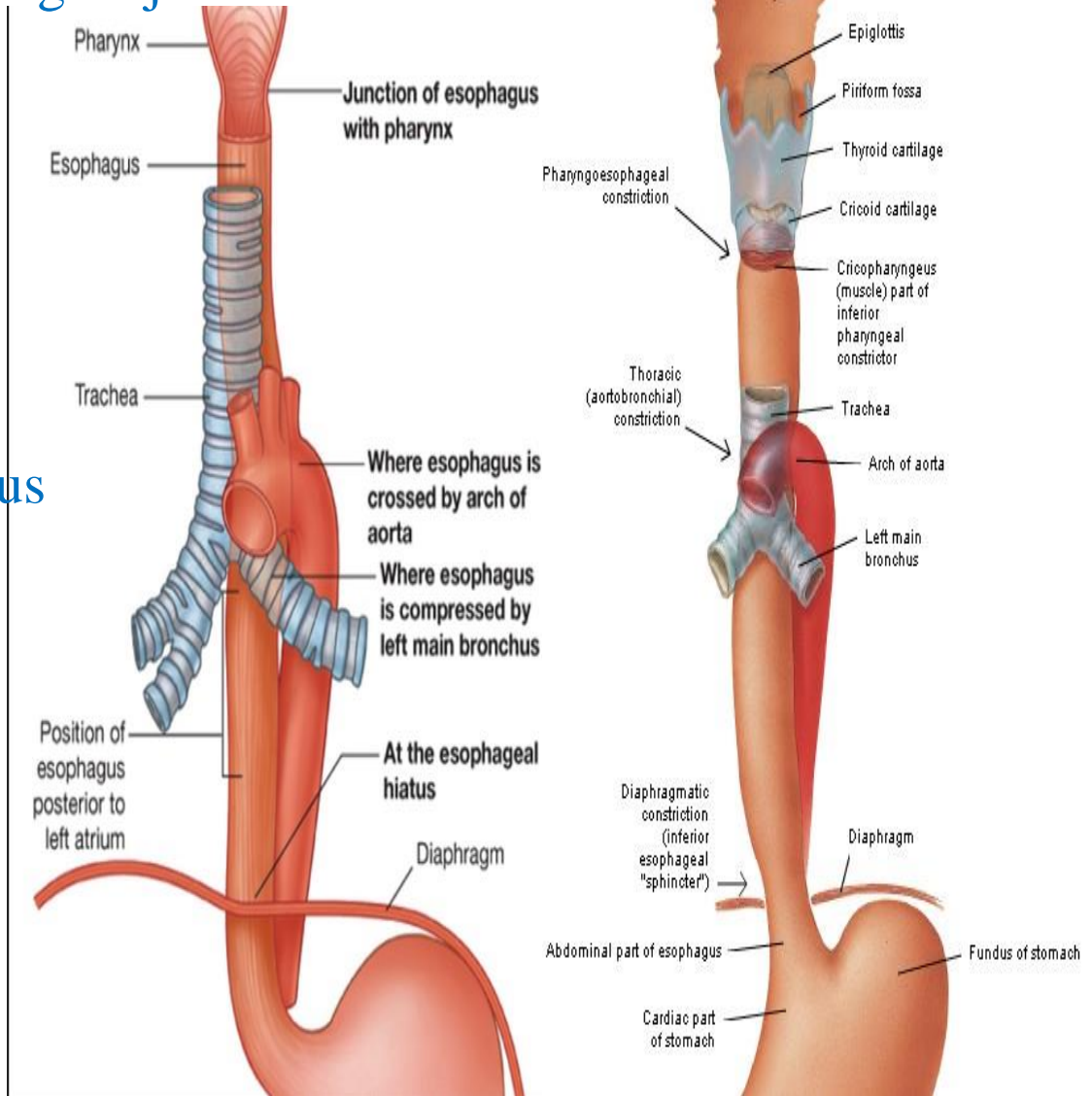
22.5 cm  
from the incisor teeth

### 3-At left main bronchus

27.5 cm  
from the incisor teeth

### 4-At diaphragm

40 cm  
from the incisor teeth



# OESOPHAGUS

**A.S.:**

the inferior thyroid artery  
 descending thoracic aorta, bronchial arteries &  
 Lt. gastric artery

**V.D.:-**

Inferior thyroid vein  
 Azygos and hemiazygos v  
 & Lt. gastric vein

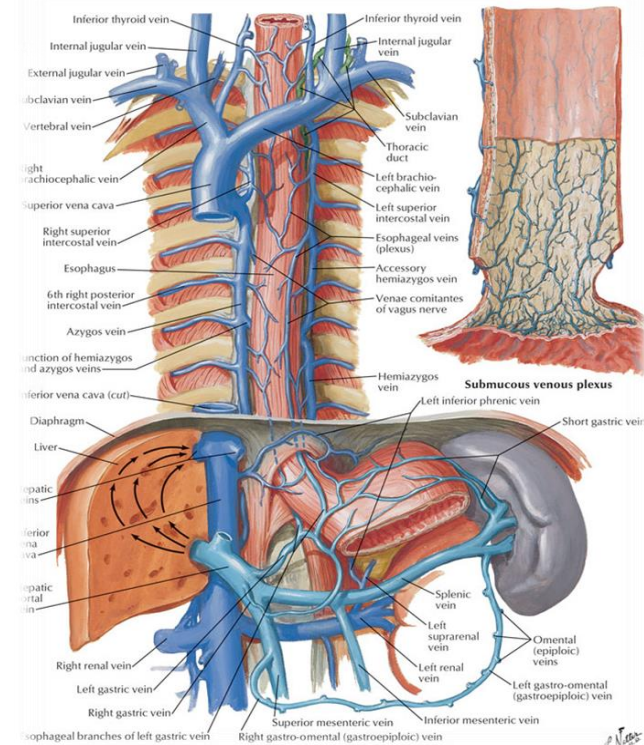
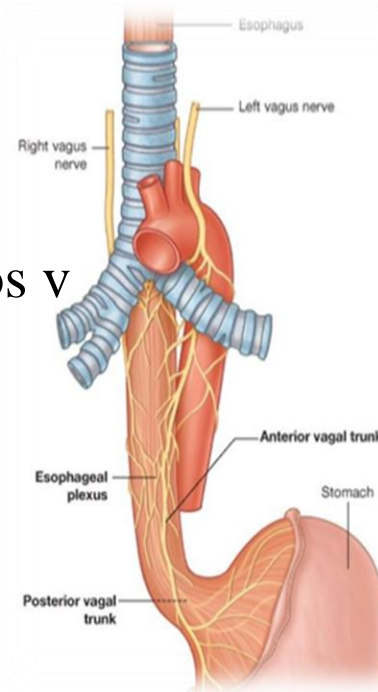
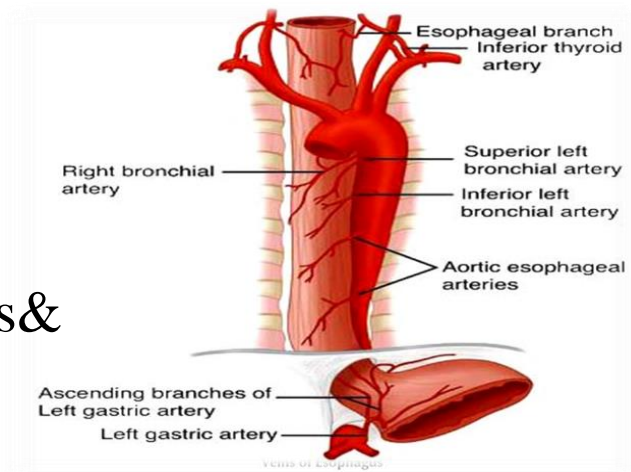
**L.D.:-**

Deep cervical L.N.  
 mediastinal L.Ns &  
 coeliac L.Ns

**N.S.:-** the 2 vagi &  
 sympathetic trunks

**Efferent :-** vagus

**Afferent (reflexes) :-** vagus **Afferent pain :-** sympathetic trunks





# STOMACH

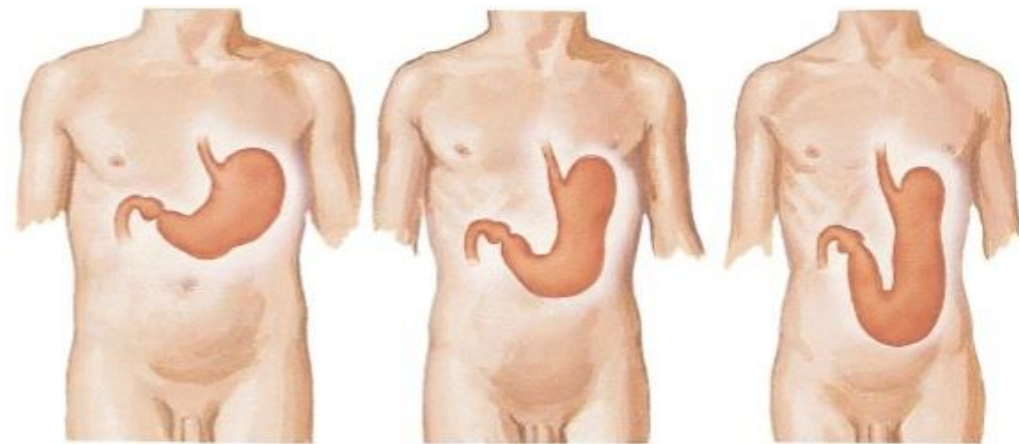
# STOMACH

## Position:

left hypochondriac  
epigastric &  
umbilical regions

## Shape:

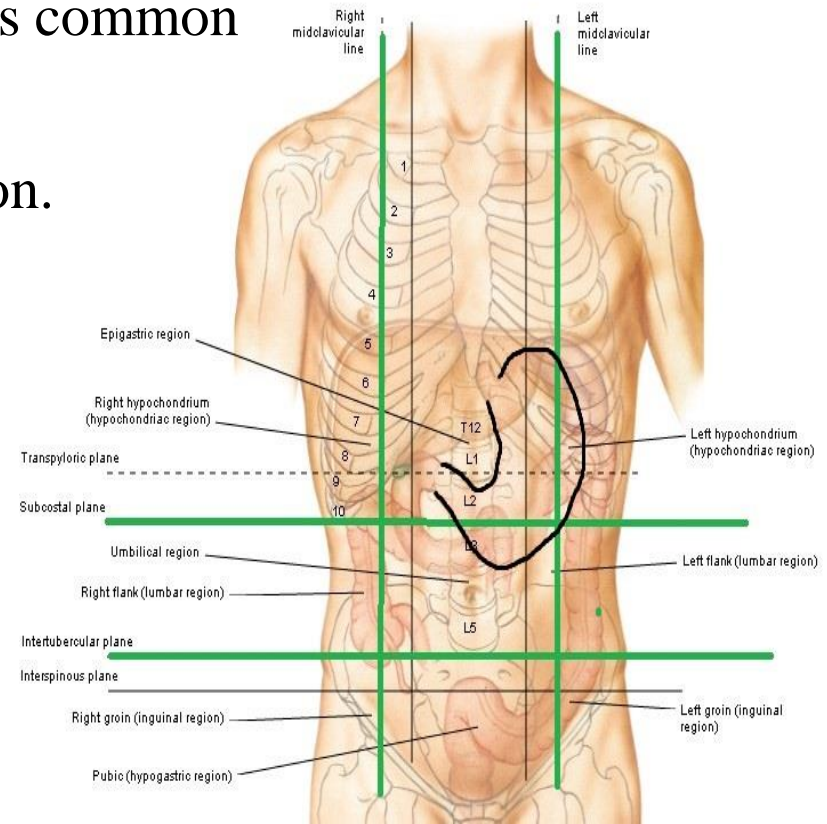
- 1- J shaped (vertical): more common
  - 2- stear (ox) horn (horizontal): less common
  - 3- intermediate
- it is more vertical in tall thin person.



STEER HORN

INTERMEDIATE

J-SHAPE



# STOMACH

## External features:

### 2 orifices:

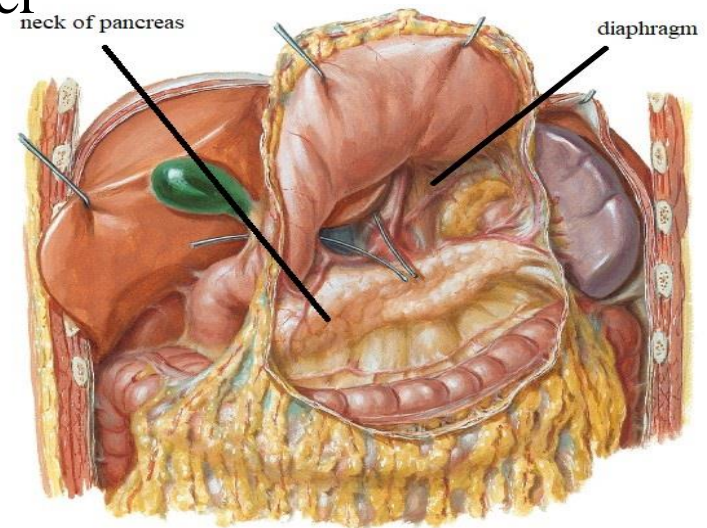
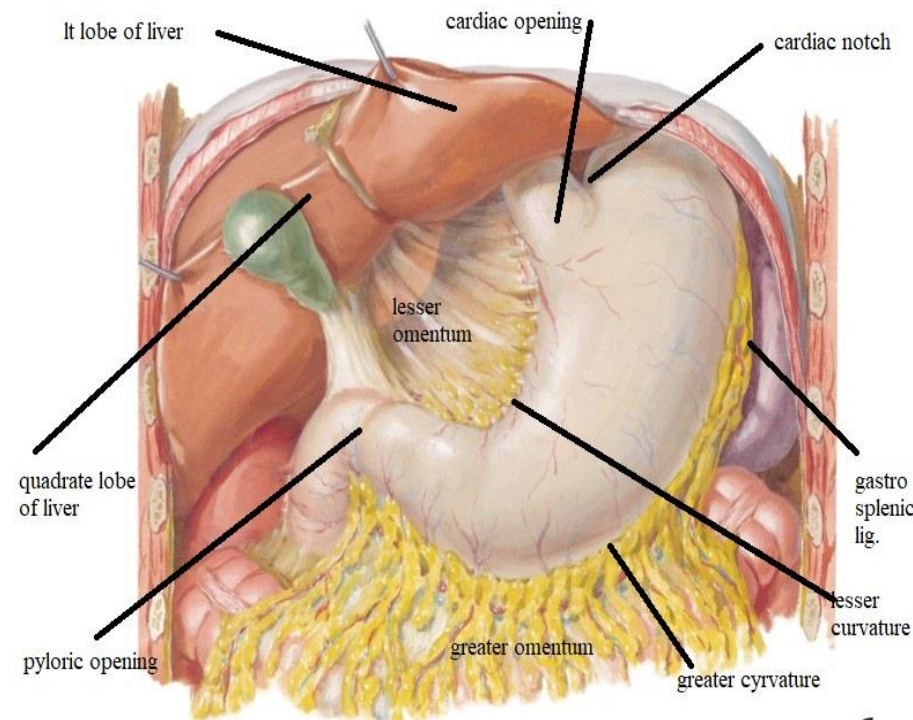
#### Pyloric orifice

- Has a true sphincter (pyloric sphincter) that indicated on surface by:
  - its thickening.
  - pyloric constriction(circular groove)
- relation :-Ant. quadrated lobe of liver  
Post.: neck of pancreas

- surface anatomy:-

L1 (transpyloric plane)

1/2 inch to Rt of midline



# STOMACH

## External features:

### 2 orifices:

#### Cardiac orifice

- Has NO true sphincter:  
but cardiac notch
- relation :-

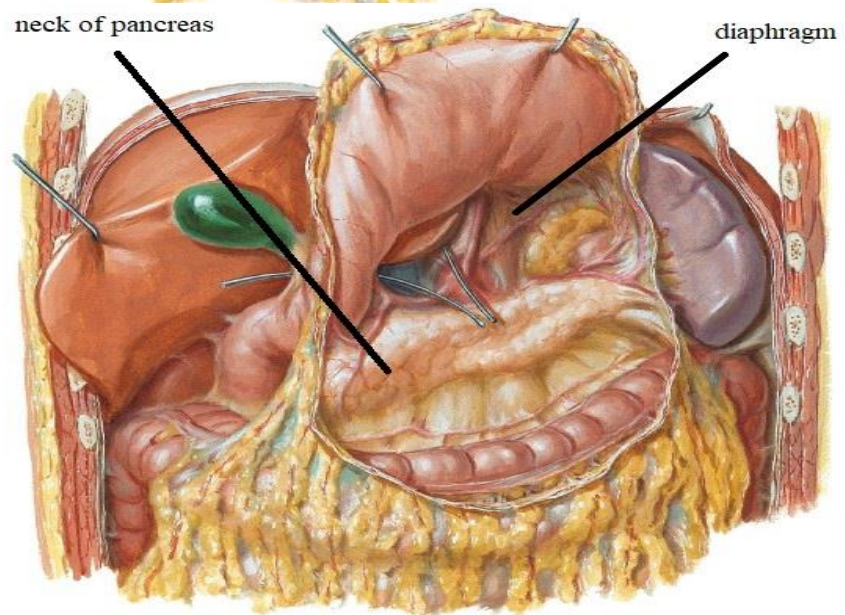
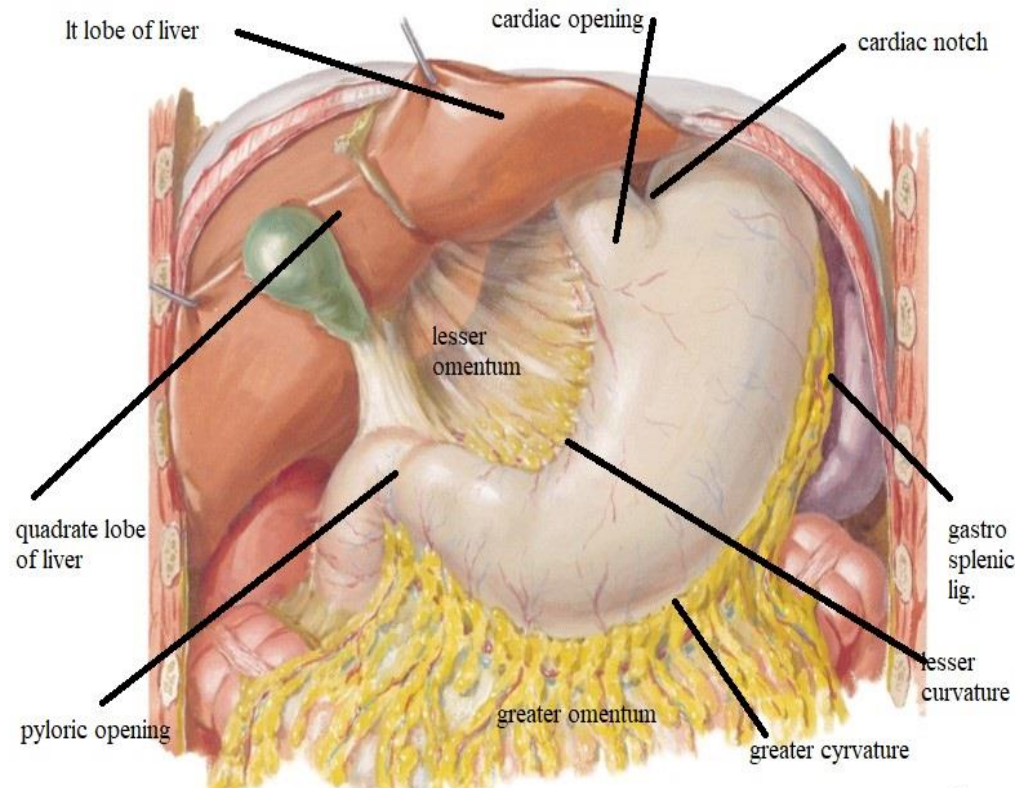
#### Ant.:- -

It lobe of liver  
ant. gastric n.

#### Post.:- -

diaphragm  
post. gastric n.

- surface anatomy:  
(T11v) 7th costal cartilage  
1 inch to left of midline



# STOMACH

## External features:

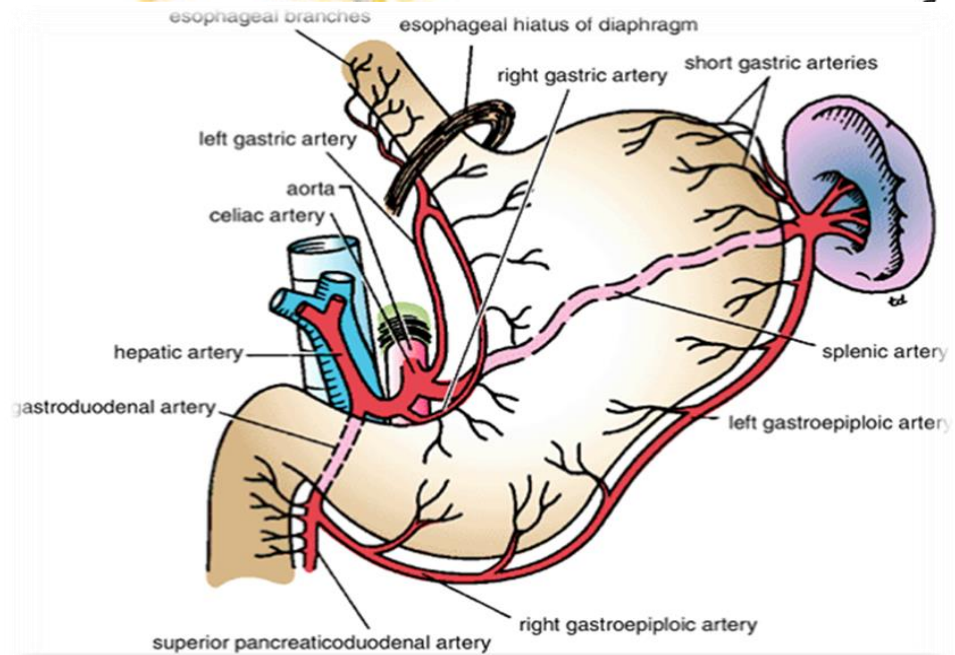
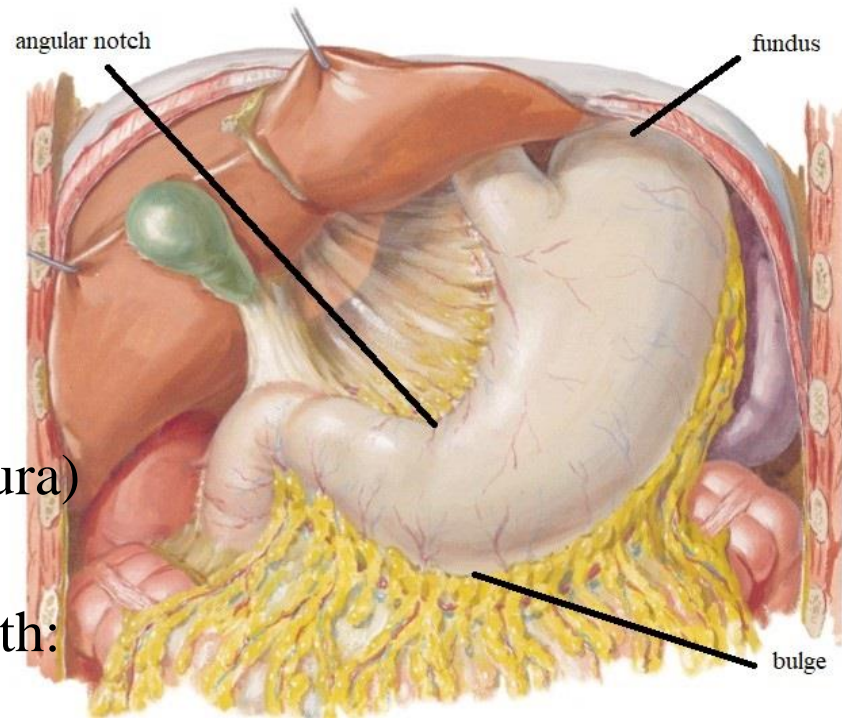
2 borders:

Rt. (lesser curvature)

- concave:  
has the angular notch (incisura)
- Relations  
attach to lesser omentum with:

Rt. & Lt. gastric vessels

( ) 2 layer of omentum



# STOMACH

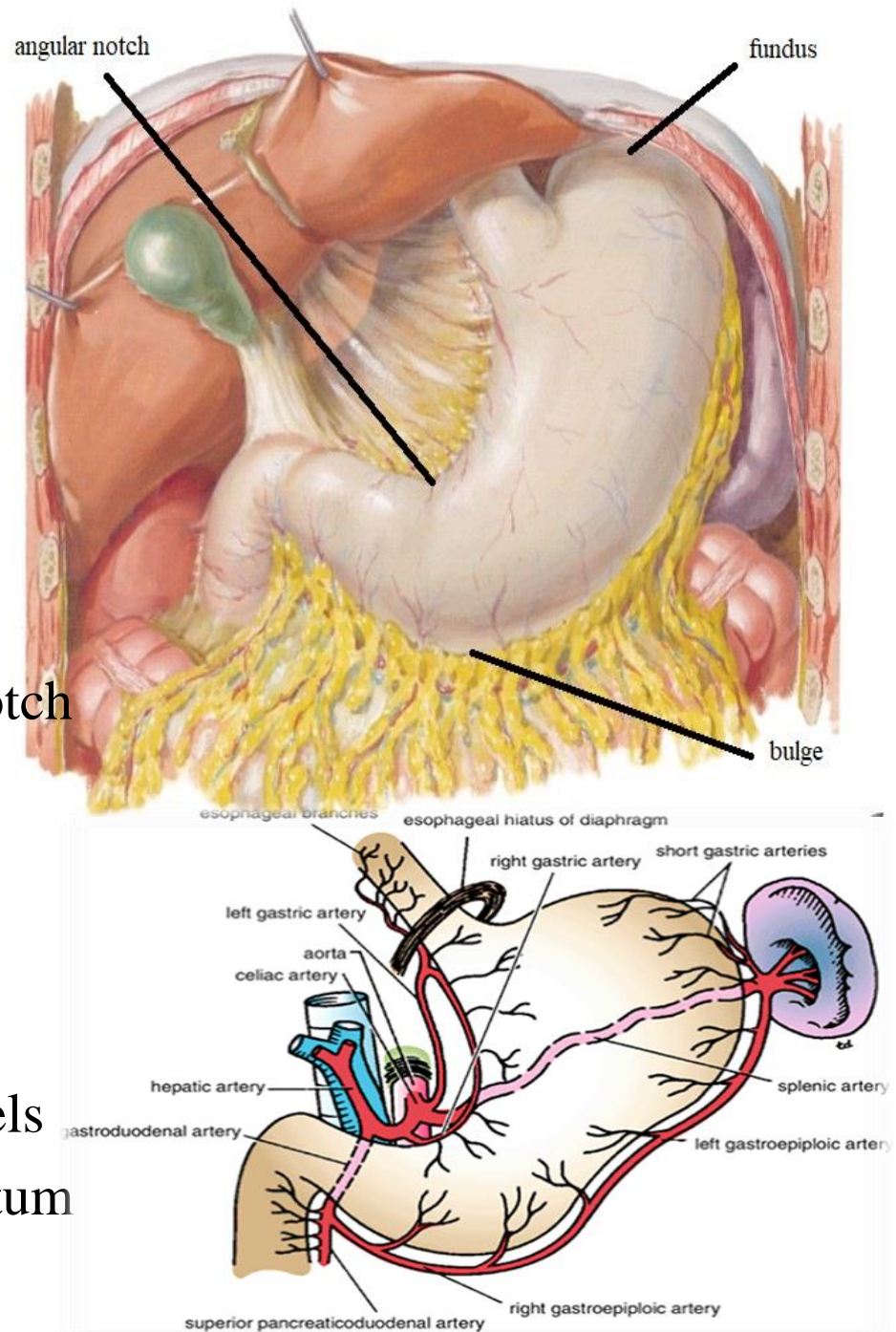
## External features:

2 borders:

Lt (greater curvature)

- convex:  
has
  - the cardiac notch
  - the fundus
  - a bulge opposite angular notch

- Relations:- attach to
  - gastrophrenic lig.
  - gastrosplenic lig.
  - greater omentum with:  
Lt & Rt. gastroepiploic vessels  
( ) 2 ant. layers of omentum



# STOMACH

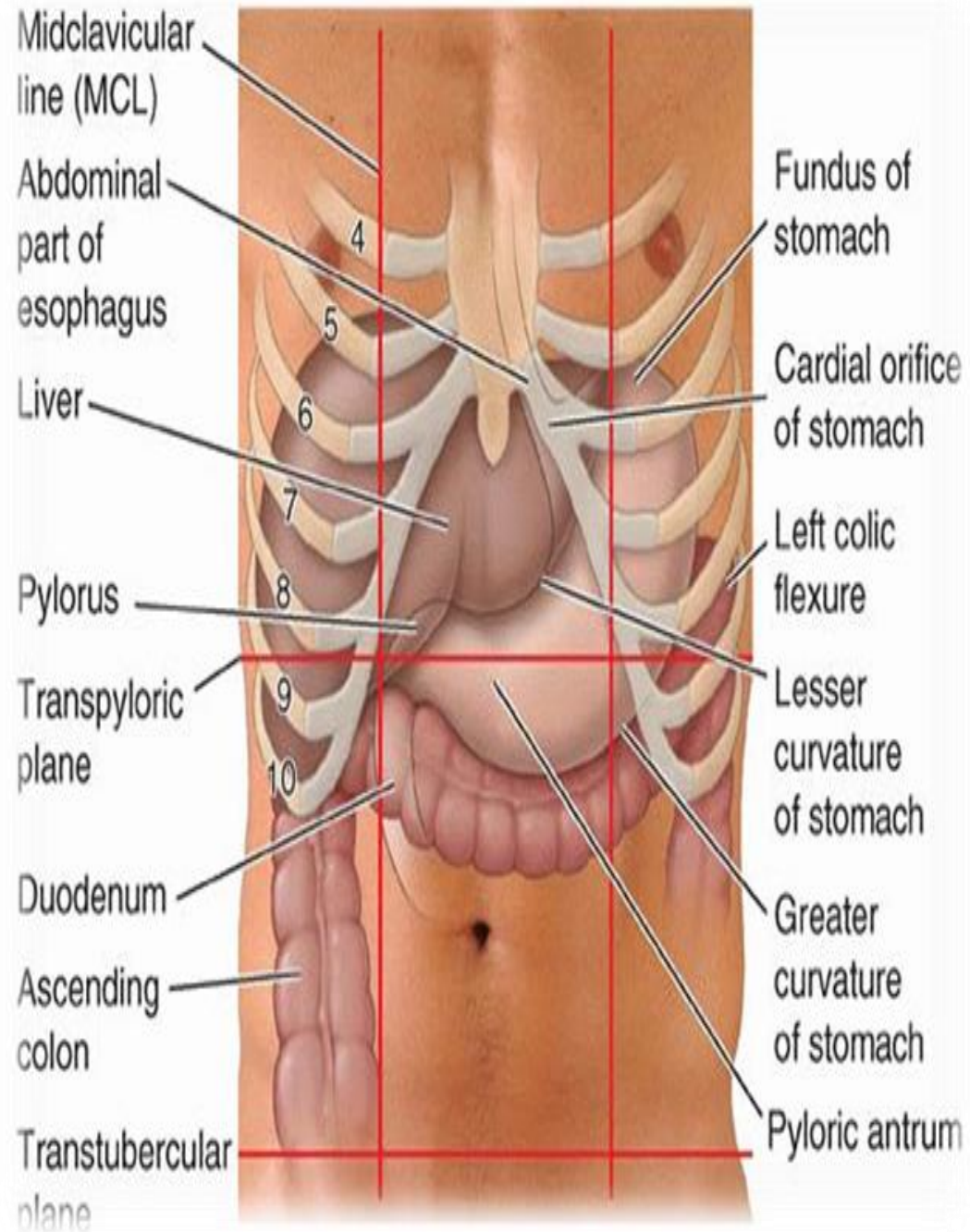
## External features:

2 surfaces:

anterior (antero superior)

## Relations

- Lt lobe of liver.
- diaphragm.
- Lt lung & pleura
- Lt 6, ,7, 8 ribs & costal cartilages
- ant. abdominal wall



# STOMACH

## External features:

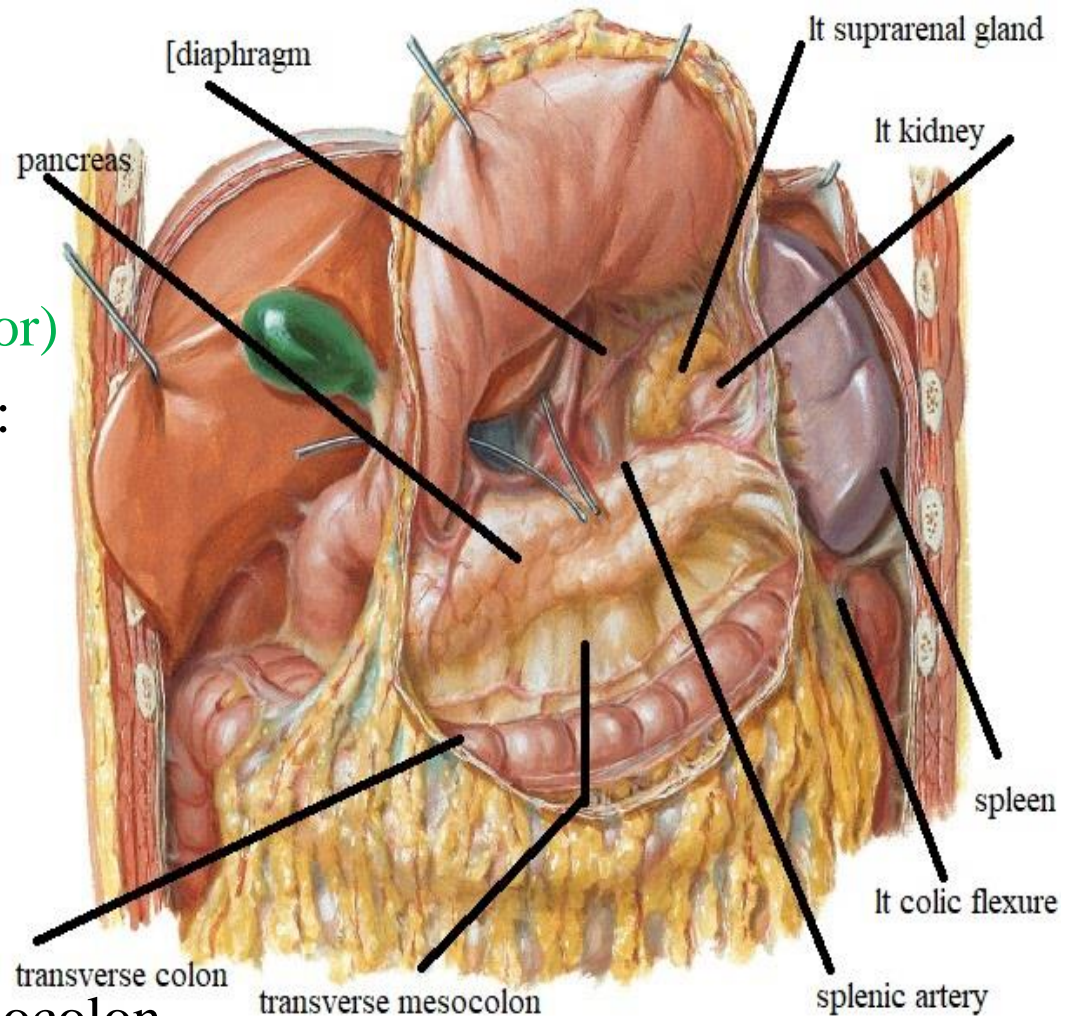
2 surfaces:

Posterior (postero inferior)

Relations:-stomach bed:

- Lt crus of diaphragm.
- Lt kidney & suprarenal gland.
- spleen.
- body of pancreas & splenic art.
- transverse colon & mesocolon.
- Lt colic flexure.

& all these structures are separated from stomach by lesser sac except spleen is separated from it by greater sac.



# STOMACH

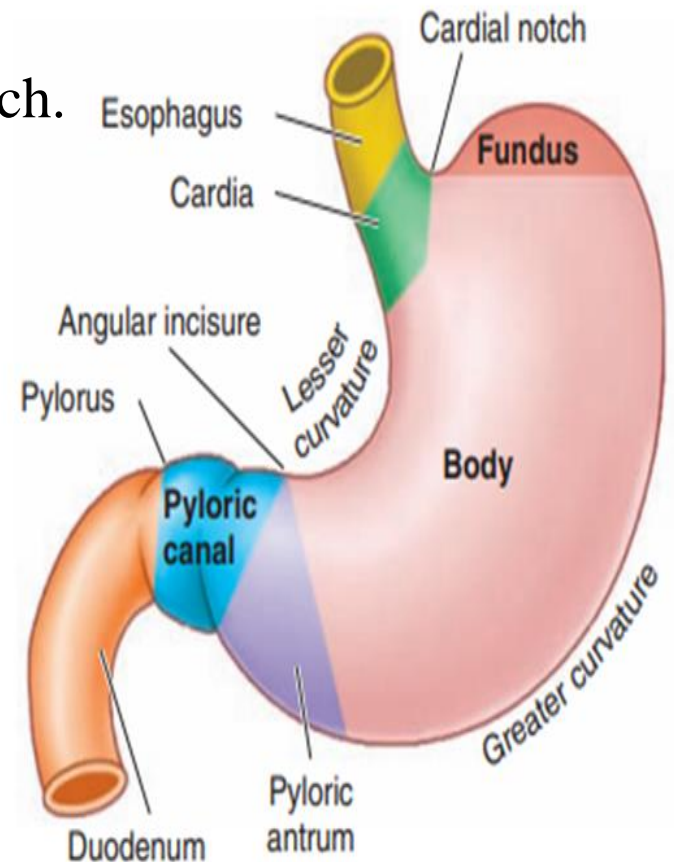
## PARTS

**1-fundus:** above cardiac end  
Lies in Lt midclavicular line  
in Lt 5th intercostal space.

**2-body:** ( ) cardiac end & angular notch.

**3-pyloric part:** below angular notch  
& is divided into 3 parts.

- pyloric antrum :  
dilated part below body
- Pyloric canal.
- pyloric orifice with  
pyloric sphincter.

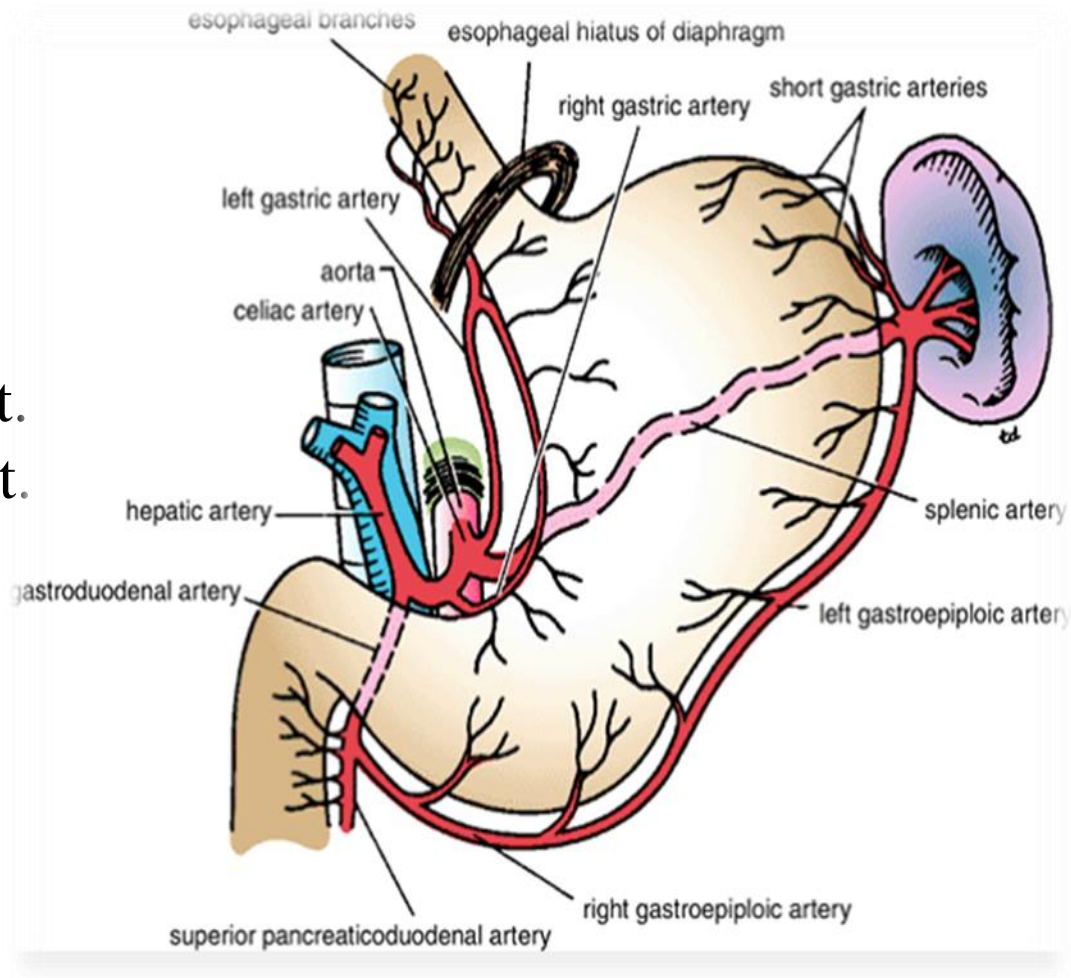


(A) Anterior view

# STOMACH

## arterial supply:

- 1-Lt gastric art.
- 2-Rt gastric art.
- 3-Lt gastro-epiploic art.
- 4-Rt gastro-epiploic art.
- 5-Short gastric art.



# STOMACH

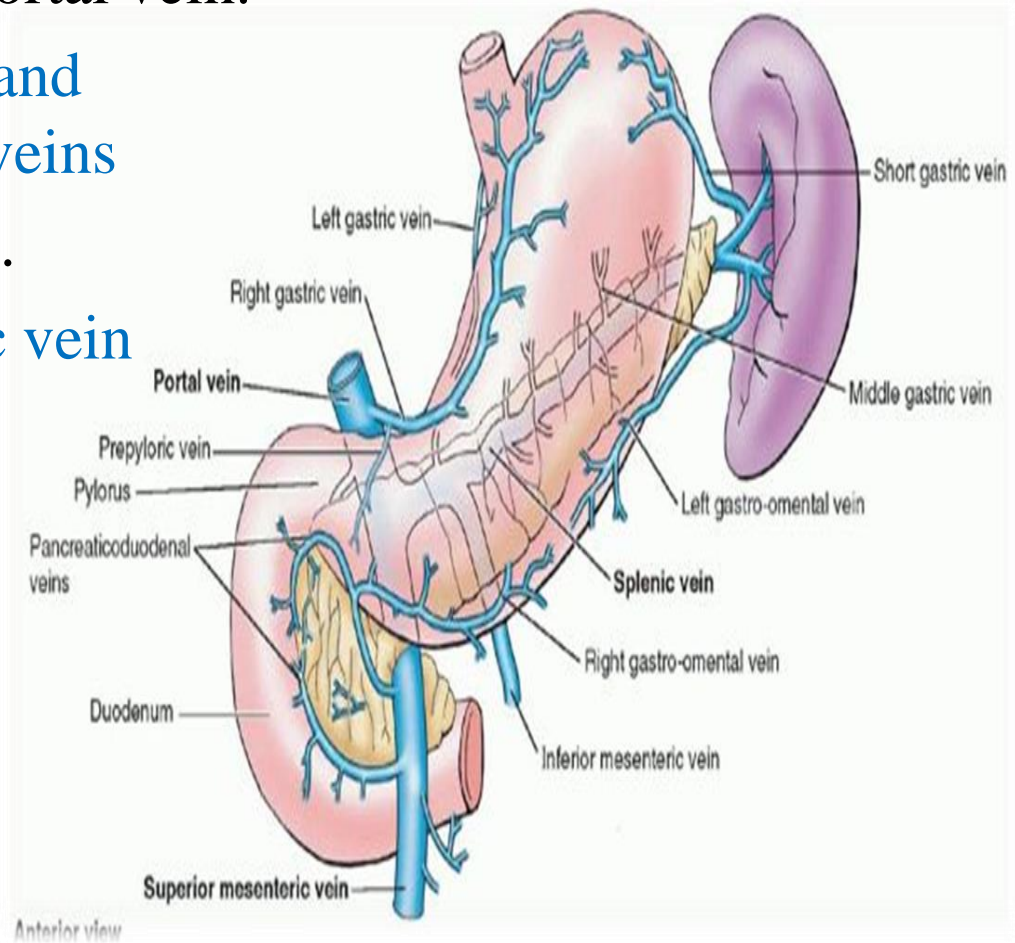
## Venous drainage:

The veins drain into the portal circulation.

The left and right gastric veins drain directly into the portal vein.

The short gastric veins and the left gastroepiploic veins end in the splenic vein.

The right gastroepiploic vein ends in the superior mesenteric vein.

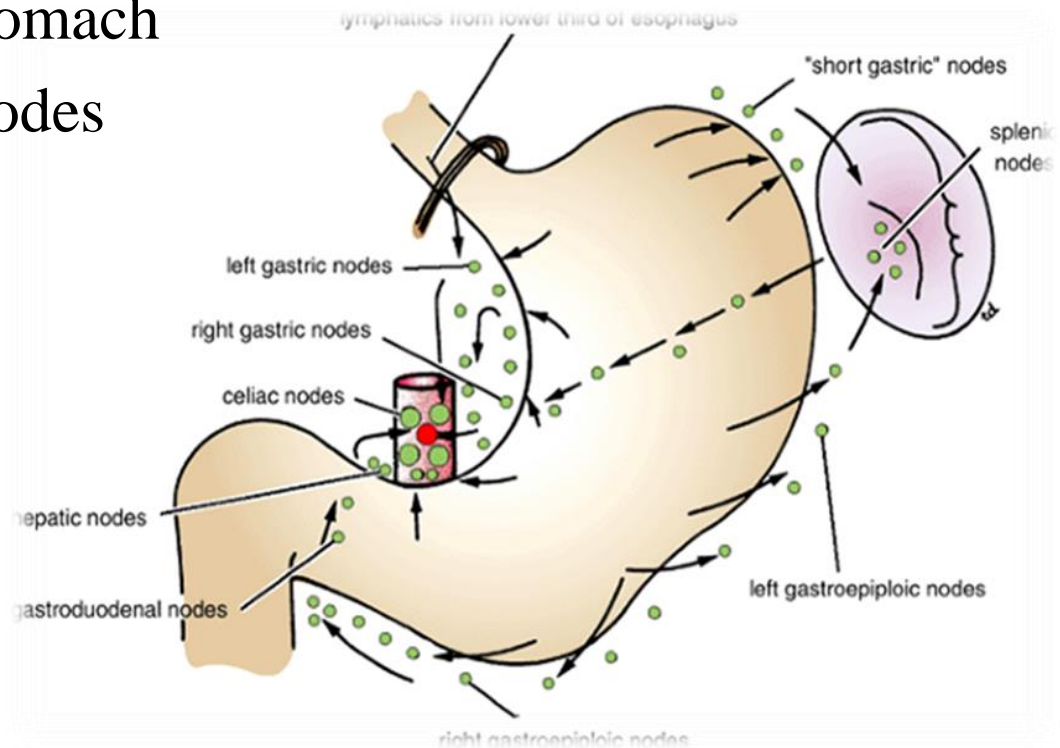


# STOMACH

## lymph drainage:

The lymph vessels follow the arteries into the left and right gastric nodes, the left and right gastroepiploic nodes, and the short gastric nodes.

All lymph from the stomach passes to the celiac nodes

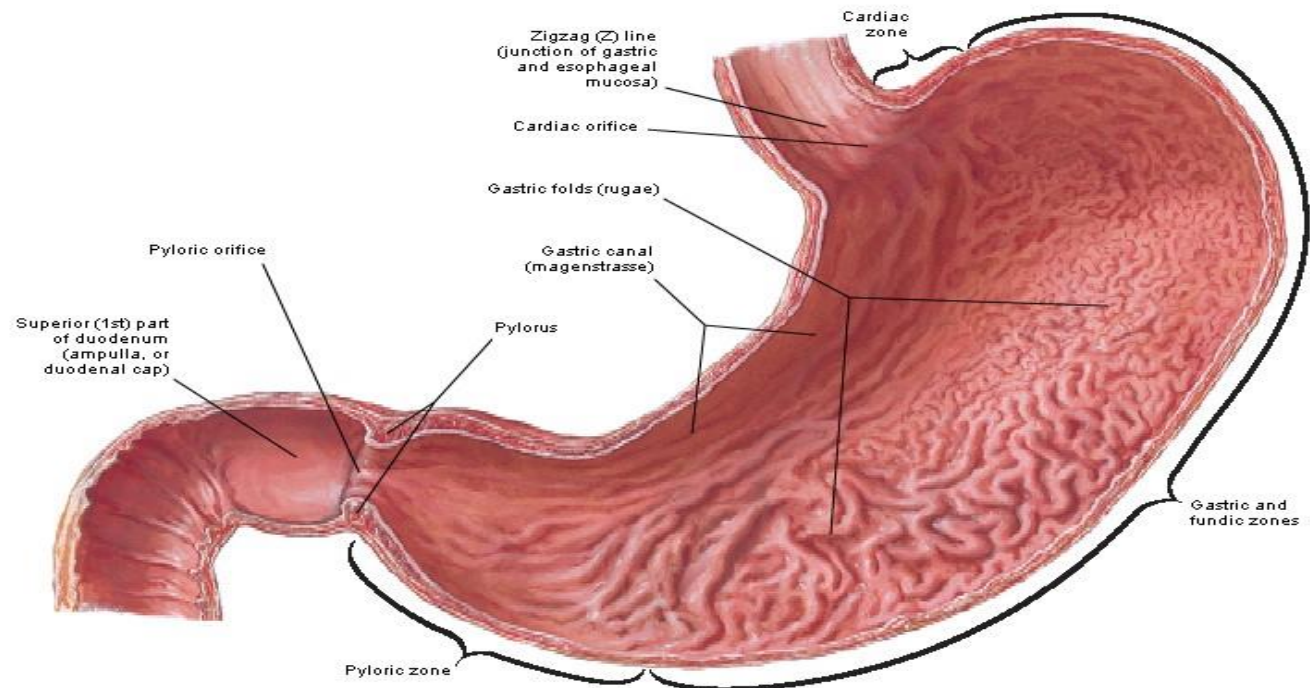


# STOMACH

## Mucosa (interior):

there are longitudinal folds called rugae that disappear in full stomach

2 of them are present along lesser curvature forming gastric canal. the liquids and food eaten at beginning of the meal run along the gastric canal to pyloric portion



# STOMACH

## nerve supply of stomach:

### sympathetic:

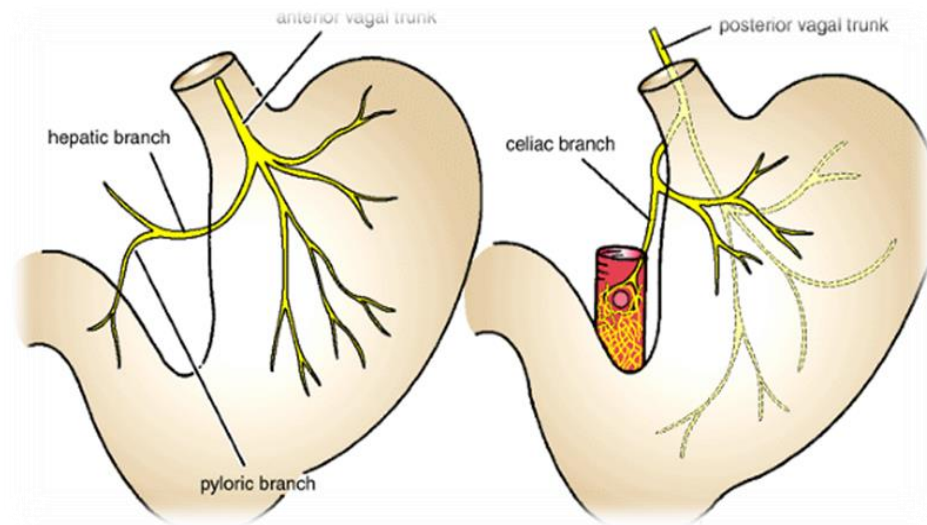
- from T6- 10 segments of spinal cord

### parasympathetic:

- from 2 vagi that continue as 2 gastric nerves.

## applied anatomy:

- gastric ulcer is common in lesser curvature at pyloric part due to less blood supply





THANQ