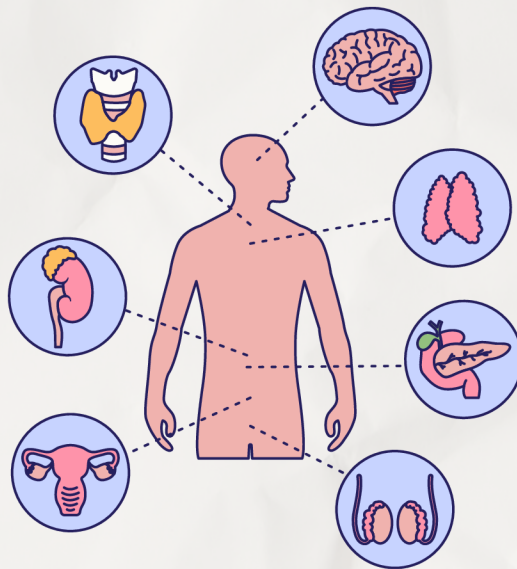


PHYSIOLOGY

FINAL EXAM



Done by:Raghad Almomani

Which of the following thyroid hormones is more potent and has a higher receptor affinity

A. T1

B. T2

C. T3

D. T4

Answer: C. T3

Which hormone reduces the number and function of lymphocytes during stress .

A. Insulin

B. Aldosterone

C. Cortisol

D. Epinephrine

Answer: C. Cortisol

What is the function of adrenal androgens in females .

A. Breast development

B. Menstrual cycle regulation

C. Growth of pubic and axillary hair

D. Ovarian follicle stimulation

Answer: C. Growth of pubic and axillary hair

A 60-year-old man has diabetes symptoms and a urine specific gravity of 1.005. What is-

the most likely diagnosis

A. Type 1 diabetes mellitus

B. Type 2 diabetes mellitus

C. Diabetes insipidus

D. SIADH

Answer: C. Diabetes insipidus

Which glucose transporter is stimulated by insulin to increase glucose uptake in muscle and adipose tissue

A. GLUT1

B. GLUT2

C. GLUT3

D. GLUT4

Answer: D. GLUT4

6. Thyroid hormones (T3/T4) are essential for which of the following developmental processes?

- A. Renal growth
- B. Bone elongation
- C. CNS development
- D. Lung expansion

Answer: C

7. The anterior pituitary is also called the .7

- A. Neurohypophysis
- B. Hypothalamus
- C. Adenohypophysis
- D. Pineal gland

Answer: C. Adenohypophysis

8. The "near reflex" is defined as .8

- A. Eye response to light
- B. Ability to see distant objects
- C. Ability of the eye to focus on near objects
- D. Reflex closure of the eyelid

Answer: C. Ability of the eye to focus on near objects

9. Which neurotransmitter is primarily released from the nucleus raphe magnus .9

- A. Dopamine
- B. Norepinephrine
- C. Serotonin
- D. GABA

Answer: C. Serotonin

10. What is the function of the premotor cortex regarding reflexes .10

- A. Initiates movement
- B. Enhances stretch reflex
- C. Inhibits stretch reflex
- D. Controls speech

Answer: C. Inhibits stretch reflex

11. What is released by the hypothalamus during fever?

- A. Dopamine
- B. Norepinephrine
- C. Prostaglandin E2
- D. Insulin

Answer: C. Prostaglandin E2

?Which of the following hormones is mainly involved in the Renin-Angiotensin-Aldosterone System (RAAS) .12

- A. Cortisol
- B. Thyroxine
- C. Renin
- D. Vasopressin

Answer: C. Renin

?Which of the following hormones is NOT classified as an endocrine hormone .13

- A. Oxytocin
- B. Prolactin
- C. Cortisol
- D. Aldosterone

Answer: B

?Which hormone continues to be synthesized even when the hypothalamic-pituitary tract is severed .14

- A. ACTH
- B. TSH
- C. Prolactin
- D. FSH

Answer. C. Prolactin

?Which of the following hormones primarily promotes uterine contraction during labor .15

- A. Estrogen
- B. Progesterone
- C. Prolactin
- D. Oxytocin

Answer: D. Oxytocin

What is the main physiological regulator of aldosterone secretion?

- A. ACTH
- B. CRH
- C. Renin-Angiotensin system
- D. Prolactin

Answer: C. Renin-Angiotensin system

Which hormone is NOT under the control of corticotropin-releasing hormone .

- A. ACTH
- B. Cortisol
- C. Aldosterone
- D. Androgens (DHEA)

.Answer: C

:DHEA (dehydroepiandrosterone) secretion is mainly stimulated by .

- A. TSH
- B. FSH
- C. ACTH
- D. LH

Answer: C. ACTH

A 20-year-old woman has low T4, and low TSH, but TSH increases markedly when TRH is given increased. Diagnosis?

- .A) primary hypothyroidism
- .B) pituitary adenoma
- .C) thyroid dysfunction
- .D) hypothalamus dysfunction
- .E) pituitary dysfunction

Ans:D

In an individual with a thyroid hormone producing adenoma, one might expect which of the following?

- .A) Increased T4, Decreased T3, Increased TRH, Decreased TSH
- .B) Increased T4, Increased T3, Decreased TRH, Decreased TSH
- .C) Increased T4, Increased T3, Increased TRH, Decreased TSH
- .D) Increased T4, Increased T3, Decreased TRH, Increased TSH
- .E) Decreased T4, Increased T3, Decreased TRH, Decreased TSH

Ans:B

A 30-year-old woman is breastfeeding her infant. During suckling, which hormonal response is expected in the woman?

- A) Increased secretion of ADH from the supraoptic nuclei
- B) Increased secretion of ADH from the paraventricular nuclei
- C) Increased secretion of oxytocin from the paraventricular nuclei
- D) Decreased secretion of neurophysin
- E) Increased plasma levels of both oxytocin and ADH

Ans:c

طب الأسنان